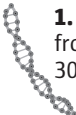
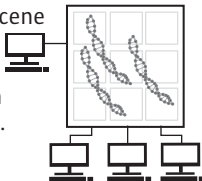


DNA, reverse genealogy used to catch alleged cold-case killer



1. DNA was collected from the crime scene 30 years ago.

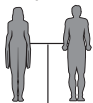
2. Crime-scene DNA run through GEDmatch data bank.



3. Results indicate shared DNA with two second cousins.

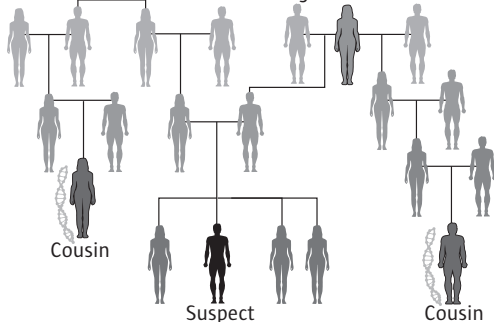


Maternal great grandparents



4. A genealogist reconstructed the family trees of the two cousins.

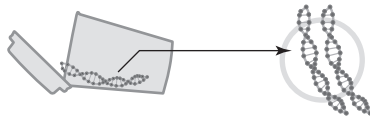
Paternal grandmother



5. The reconstructed family trees lead to a suspect through common ancestors.



6. Detectives collect DNA from a discarded cup. It matches DNA from the crime scene.



Source: Snohomish County Sheriff's Office

Reporting by **SARA JEAN GREEN**

Graphics by **MARK NOWLIN / THE SEATTLE TIMES**