



a.d. preservation • historic preservation & historical services

Annie Doyon, MHP / Principal Investigator

heritage – sustainability - preservation

PO Box 10296 - Spokane WA 99209
859.533.9943 / cell • annie.doyon@gmail.com

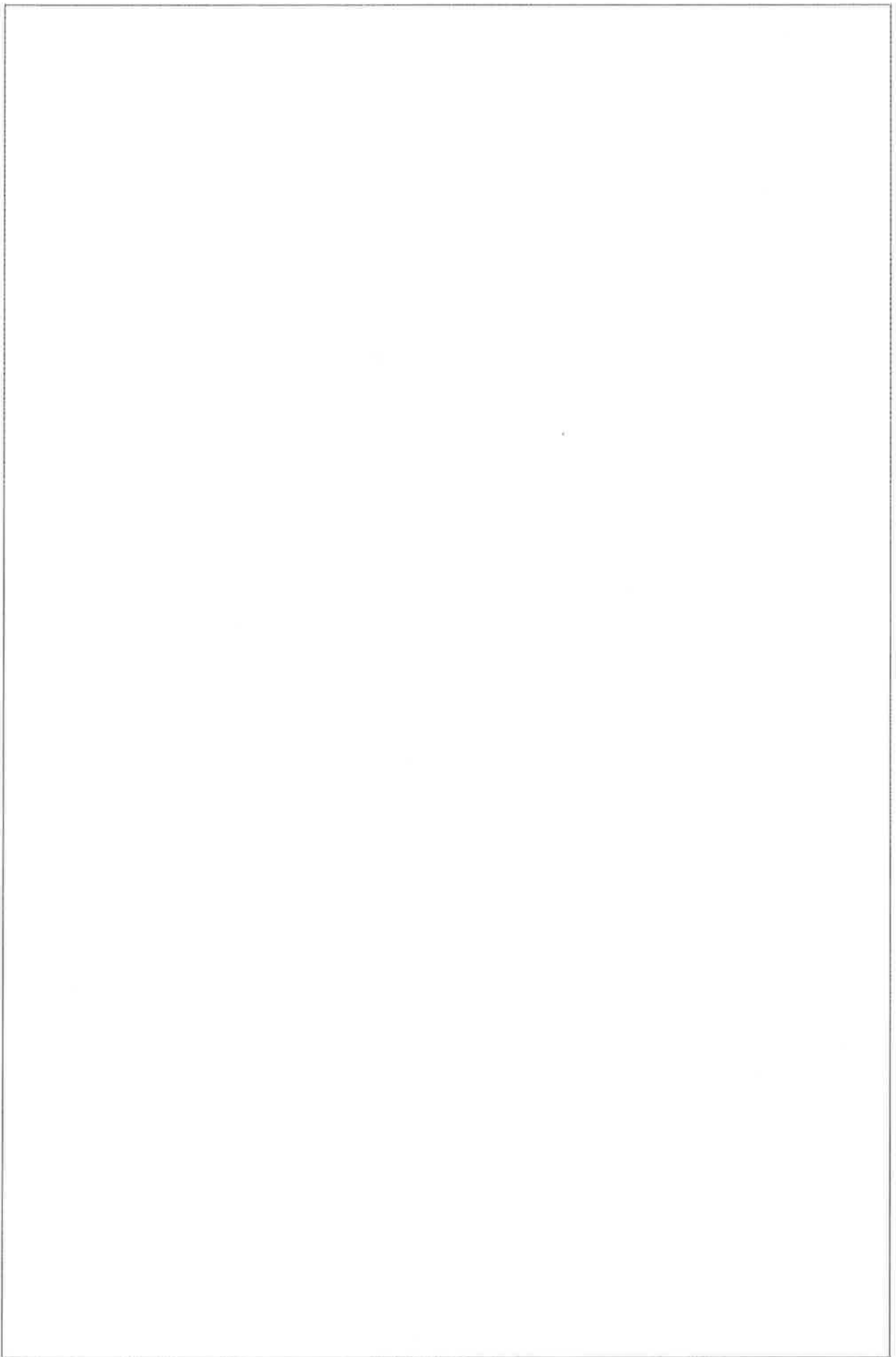
**OLD FIRE DISPATCH BUILDING: NATIONAL REGISTER OF HISTORIC
PLACES ELIGIBILITY RECOMMENDATION FOR CITY OF SPOKANE
LANDMARKS COMMISSION HEARING (12/15/10)**

December 14, 2010

Submitted to:

City of Spokane Public Works & Utilities
Barbara Patrick
808 W Spokane Falls Boulevard
Spokane, WA 99201

City-County of Spokane Historic Preservation Office
Spokane Historic Landmarks Commission
808 W Spokane Falls Boulevard
Spokane, WA 99201





*Old Fire Dispatch Building: National Register of Historic Places Eligibility
Recommendation for City of Spokane Landmarks Commission Hearing (12/15/10)*

INTRODUCTION

During December 2010 Annie Doyon, of A.D. Preservation, completed a cultural historic evaluation of the old fire dispatch building, located at 508 N Wall St in Spokane, Washington. The survey was conducted at the request of Barbara Patrick of Public Works and Utilities for the City of Spokane to provide an eligibility determination for the building in the National Register of Historic Places (NRHP). In general, in order for a property to be eligible for listing in the NRHP, it must be at least 50 years old and possess both historic significance and integrity. National Register Criteria (36 CFR 60) recognizes significance for districts, sites, buildings, structures and objects:

- (a) that are associated with events that have made a significant contribution to the broad patterns of our history; or
- (b) that are associated with the lives of persons significant in our past; or
- (c) that embody the distinctive characteristics of a type, period, or method of construction, or that represent the work of a master, or that possess high artistic values, or that represent a significant and distinguishable entity whose components may lack individual distinction; or
- (d) that have yielded, or may be likely to yield, information important in prehistory or history.

A property must meet at least one of the criteria for listing. Integrity must also be evident through historic qualities including location, design, setting, materials, workmanship, feeling, and association (National Park Service 1997).

ARCHITECTURAL DESCRIPTION & NRHP EVALUATION

Description: The old fire dispatch building is small, single-story, one-bay, flat- or very low-pitched-gable roof building featuring stepped parapet walls on both the façade and rear elevations (Figure 1). It was originally constructed, in 1922 as the Washington Water Power Vault (a storage vault) as part of the Upper Falls Hydroelectric Development project that also resulted in the construction of the Upper Falls and Monroe Street Powerhouses slightly west/downriver from the vault building, as well as the concrete railing running along the pedestrian pathway in this area (Figure 2). The original address of the building was 340 N Wall St, however, this was later updated to 508 N Wall St when the street addresses were re-issued; the building still resides in its original location. It is located along the basalt bluffs on the south bank of the Spokane River at the upper falls on a slightly angled grade that rises to the east. It is currently situated between the former YMCA building and the footbridge at the base of the Upper Falls Powerhouse.

The building rests on a slightly raised, poured concrete foundation that is angled along the top. Historic photos indicate that the exterior walls are solid masonry construction; either brick or hollow-tile block (Figure 3). It appears that by the time construction was completed, an exterior finish of slightly textured stucco or concrete was added to the recessed areas on the building and a that smooth stucco or concrete finish was added to the all areas of the primary wall plane on the exterior (Figure 4). It is unknown if the current exterior finishes are the same as the original or if the exterior has been refinished, however, it appears the areas with the smooth finish and the foundation were painted a light color between the mid-1940s and 1950s (Figures 5). The parapet walls on both ends of the building exhibit terra cotta caps and the roof exhibits a smooth finish (Figure 6). All four elevations of the building exhibit three recessed



*Old Fire Dispatch Building: National Register of Historic Places Eligibility
Recommendation for City of Spokane Landmarks Commission Hearing (12/15/10)*



Figure 1: Northwest corner of the Old Fire Dispatch Building.



Figure 2: Southwesterly view toward the Upper Falls and Monroe Street Powerhouses and a portion of the concrete railing.



*Old Fire Dispatch Building: National Register of Historic Places Eligibility
Recommendation for City of Spokane Landmarks Commission Hearing (12/15/10)*

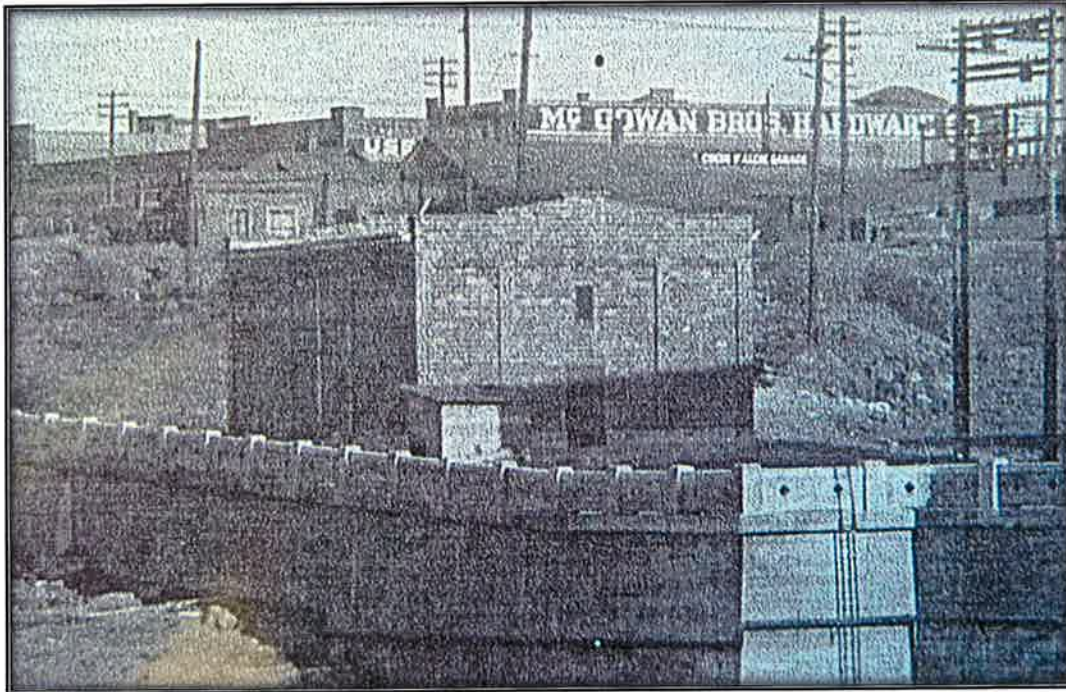


Figure 3: Photograph of the building under construction, 1920 (Northwest Museum of Arts and Culture).

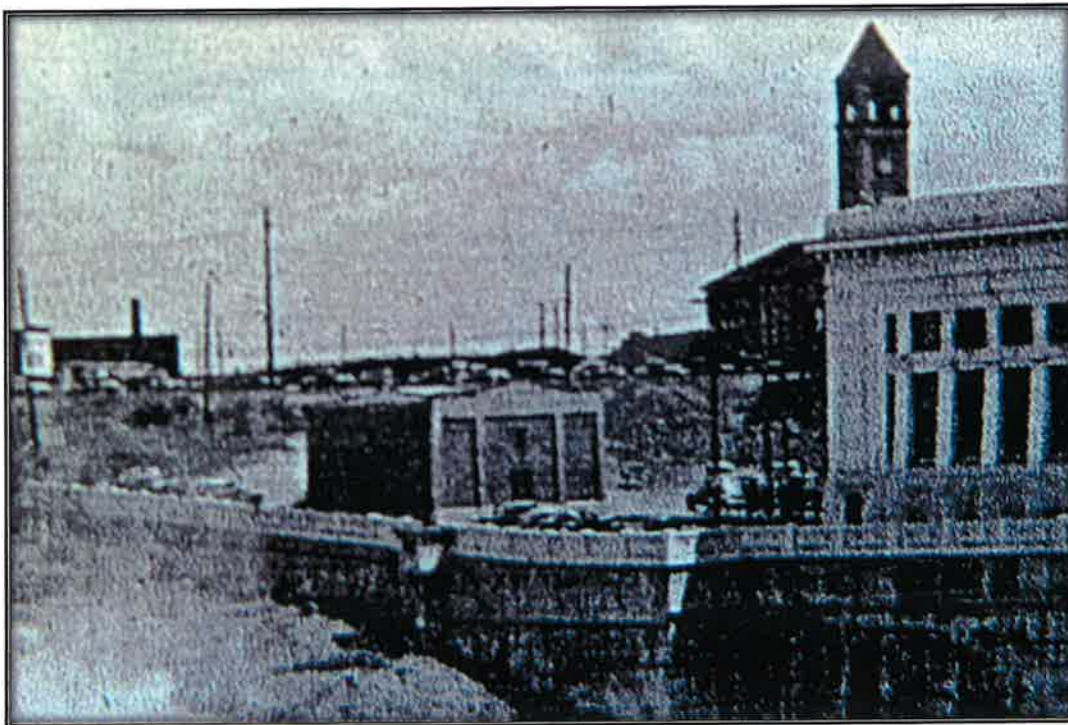


Figure 4: 1938 image of the building (Northwest Museum of Arts and Culture).



*Old Fire Dispatch Building: National Register of Historic Places Eligibility
Recommendation for City of Spokane Landmarks Commission Hearing (12/15/10)*

bays divided by pilasters. Originally the façade (west) elevation featured a central, single-leaf pedestrian entry with a rectangular vent above; a similar vent was found on the east elevation (Figure 7). A small porch and stairway led to the entry. Historic photos indicate no other openings pierced the exterior walls of this building as originally constructed (Figure 8).



Figure 5: Early image of the building, southwest corner (façade and south elevations) ca. 1940 (Northwest Museum of Arts and Culture).



Figure 6: Southwesterly view toward the building and the rooftop.



*Old Fire Dispatch Building: National Register of Historic Places Eligibility
Recommendation for City of Spokane Landmarks Commission Hearing (12/15/10)*

By the time of Expo '74, a small addition was built onto the east elevation and three large, rectangular windows had been added on the north elevation; one window within each of the recessed areas (Figures 9–10). The small addition features a flat-roof, and runs nearly the width of the east elevation (Figure 11). It was constructed in a style similar to the original building, with recessed areas divided by pilasters, and a slightly raised concrete foundation. The pilasters, foundation, and cornice line exhibit a smooth finish painted off-white, similar to the main building, while the recessed areas feature a rock aggregate exterior finish (Figure 12). Large vents are found on the north and east elevations, and a single-leaf pedestrian entry is found on the south elevation. The entry is sheltered by a metal-roof porch supported by square wood posts and is accessible via a poured concrete porch with metal railings. The three windows added along the north elevation contain two-light metal sash windows with a vertical division, and feature smooth concrete window surrounds and sills that extend slightly outward (Figure 13). The easternmost window has been covered over with paneling. Gutters and downspouts are now found on the north and south side elevations and nonhistoric exterior lighting has been added to the building. The primary entry to the facility is still in it's original location, but now contains a nonhistoric glass and metal entry door; the former location of the vent above the entry has been patched with concrete (Figure 14). The entry is accessible via a poured concrete stairway with three large steps and nonhistoric metal railings. According to city staff, the interior of the building was completely re-done in 1992 to more adequately accommodate the fire department dispatch that was housed in the building at that time. As part of this renovation, the main floor was raised so that the dispatch wiring could be run beneath the floor. This raised floor is visible through the front door of the building (Figure 15). A number of modern mechanical systems and vents are visible on the building's rooftop, and a small area directly south of the building has been enclosed with cyclone fencing.



Figure 7: Facade elevation of the building, 1925 (Northwest Museum of Arts and Culture).



*Old Fire Dispatch Building: National Register of Historic Places Eligibility
Recommendation for City of Spokane Landmarks Commission Hearing (12/15/10)*

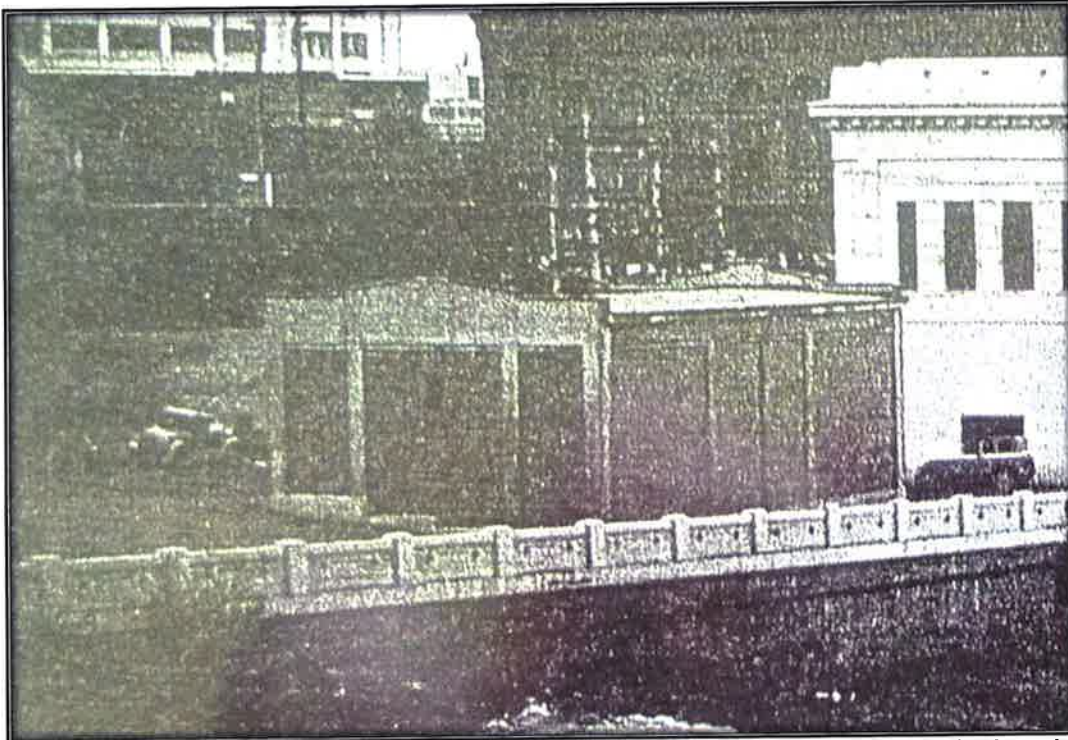


Figure 8: Image of the northeast corner (east and north elevations), 1936 (Northwest Museum of Arts and Culture).



Figure 9: Southeasterly aerial image of the building revealing windows and east end addition, 1974 (Northwest Room).



*Old Fire Dispatch Building: National Register of Historic Places Eligibility
Recommendation for City of Spokane Landmarks Commission Hearing (12/15/10)*



Figure 10: Image looking out the new windows over the falls, undated (Northwest Museum of Arts and Culture).



*Old Fire Dispatch Building: National Register of Historic Places Eligibility
Recommendation for City of Spokane Landmarks Commission Hearing (12/15/10)*



Figure 11: Southeast corner, east elevation, and addition.



Figure 12: Aggregate finish on east addition.



*Old Fire Dispatch Building: National Register of Historic Places Eligibility
Recommendation for City of Spokane Landmarks Commission Hearing (12/15/10)*



Figure 13: Nonhistoric windows on the north elevation.



Figure 14: Current appearance of facade and main entry.



*Old Fire Dispatch Building: National Register of Historic Places Eligibility
Recommendation for City of Spokane Landmarks Commission Hearing (12/15/10)*



Figure 15: View toward the interior and raised floor from front door.

NRHP Evaluation: Not Eligible. The old fire dispatch building does not appear to be a particularly outstanding or noteworthy example of architecture from the early- to mid-twentieth-century. Its type, design qualities, method of construction, materials, and overall appearance are typical of small commercial and utility buildings of this period thus rendering it a building lacking any unique architectural distinction. The installation of windows on the north elevation has severely reduced the building's integrity of design, materials, and workmanship, compromising the original appearance of the building. The east end addition, constructed in a style mimicking the original building, has further reduced the building's historical integrity, and altering its footprint. More significant buildings from this period are found throughout Spokane, including the two adjacent powerhouse buildings, which are much more architecturally significant structures, possessing very high levels of integrity of design, workmanship, materials, setting, feeling, location, and association. Thus, the old dispatch building is ineligible for inclusion in the NRHP under Criterion C.

Though constructed as part of the Upper Falls Hydroelectric Development, this building was neither a significant building nor a particularly important element of that project, as it was simply the storage vault and not utilized for power generation. The nearby Upper Falls and Monroe Street Powerhouses are much more significant and important buildings resulting from this project. The two powerhouse buildings are directly representative of the importance of the river and the 1922 development project in power generation, and the technology, industry, and economy in Spokane at the time. Having been converted during the mid- to late-twentieth-century into a fire department dispatch center and undergoing great physical change as a result



*Old Fire Dispatch Building: National Register of Historic Places Eligibility
Recommendation for City of Spokane Landmarks Commission Hearing (12/15/10)*

of this transformation and later being vacated completely, the building's integrity of feeling and association with hydroelectric development has been compromised. As a result of its status as a support structure, lending little significance to the hydroelectric capacities of the river, this building is ineligible for listing under Criterion A.

Research did not yield any information associating the old fire dispatch building with any persons of historical significance, nor is the building likely to yield information about prehistory; thus it is ineligible for listing under Criterion B or D.

If you have any questions or need additional information, please do not hesitate to contact me.

Sincerely,

Ann Marie Doyon, MHP
Principal Investigator
Architectural History



*Old Fire Dispatch Building: National Register of Historic Places Eligibility
Recommendation for City of Spokane Landmarks Commission Hearing (12/15/10)*

REFERENCES CITED

Avista

N.D. Upper Falls Powerhouse, Historic Signage, Riverfront Park, Spokane, Washington.

National Park Service

1997 How to Apply the National Register Criteria for Evaluation: *National Register Bulletin* No. 15., Department of the Interior, Washington D.C.

Northwest Museum of Arts and Culture

Files of the Avista/Washington Water Power Archival Collection, Northwest Museum of Arts and Culture, Spokane, Washington.

Northwest Room

Files of the Avista/Washington Water Power Archival Collection, Northwest Room, Spokane Public Library, Spokane, Washington.



ann marie p. doyon, MHP

PO Box 10296, Spokane, WA 99209
859.533.9943 / cell • annie.doyon@gmail.com

Curriculum Vitae

Workshops, Conferences, and Additional Training:

- The Basics of Archives Workshop, Washington State Historical Records Advisory Board, Cheney, WA, 2010.
- Washington State Department of Archaeology and Historic Preservation (SHPO) Consultant Training, 2010.
- Department of Defense Anti-Terrorism Level I Awareness Training, (online training course), 2010.
- Heritage Barn Conference, Walla Walla, WA. Attendee. May 2010.
- Section 106 Essentials Training, Advisory Council for Historic Preservation, Indianapolis, IN, 2009.
- *Kentucky's Traditional Courthouses, Losses and Gains*. Preservation Gallery, Poster Session Presenter, Kentucky's Biennial Historic Preservation Conference, Bardstown, KY, 2008.
- National Trust for Historic Preservation Conference, Tulsa OK. Attendee. October 2008.
- Historic Windows Workshop, Blue Grass Trust for Historic Preservation, Lexington, KY, 2007.
- Mortar Re-pointing Workshop, Pine Mountain Settlement School, Pine Mountain, KY, 2007.

Volunteer Activities:

- Benjamin Latrobe's Pope Villa Student Forum, Blue Grass Trust, Lexington Kentucky, October 2008.
- Barn Preservation Advisory Committee, Preservation Kentucky / Rural Heritage Development Initiative, 2008.
- Co-Chair and Secretary, University of Kentucky, Historic Preservation Graduate Organization, Lexington, Kentucky, 2008 – 2009.
- Rural Heritage Development Initiative Barn Tour, Kentucky, April & September 2008 (Research and preparation of historical information for each property visited).
- Kentucky's Most Endangered Historic Places List (research), Summer 2008.
- Preservation Charette – "Rocky Point", James Harrod Trust, Harrodsburg Kentucky, February 2008.
- Committee Member, University of Kentucky, Graduate Program in Historic Preservation Admissions Committee, Lexington, Kentucky, 2007 – 2009.
- 'Doing It Project', Spokane Preservation Advocates & City of Spokane Historic Preservation Office, Spokane Washington, October 2006 (Documentation of historic Cannon Hill neighborhood).

Sponsored Projects:

- Doyon, Ann Marie P.
2009 *North Main Street Historic District National Register of Historic Places Nomination*. (North Main Street Historic District, Harrodsburg, KY). For the James Harrod Trust, Harrodsburg, Kentucky (Status Pending).
- Kentucky's Lincoln Heritage Trail. Site visits and evaluations, photography, and promotion. For the Kentucky Heritage Council, 2007 – 2008.

Professional Affiliations:

- National Trust for Historic Preservation
 - Forum Member
- American Planning Association
 - Division Affiliations: Urban Design & Preservation; Small Town & Rural Planning; and New Urbanism
- Vernacular Architecture Forum
- Society of Architectural Historians, Marion Dean Ross Chapter
- American Historical Association
- Spokane Preservation Advocates

Professional Qualifications:

- Meets the qualification standards for cultural resource management professional, satisfying the Secretary of the Interior's Standards for architectural historian and historian
- Included on the list of qualified historic preservation consultants and/or completed projects on file with the following State Historic Preservation Offices:
 - Idaho
 - Illinois
 - Indiana
 - Kentucky
 - Louisiana
 - Missouri
 - Montana
 - Ohio
 - Oregon
 - Washington
 - West Virginia
 - Wyoming

Professional Experience:

- Independent Consultant
Historic Preservation, Architectural History, History
August 2010 – present
- Cultural Resource Analysts, Inc. (Lexington, KY)
Architectural Historian
April 2009 – August 2010
 - Awarded 'Employee of the Month,' April 2010
- Kentucky Heritage Council, Preservation Kentucky, Rural Heritage Development Initiative, University of Kentucky (Frankfort, Lexington, and Hodgenville, KY)
Historic Preservation Graduate Assistantship
August 2007 – May 2009
- Eastside Heritage Center (historic preservation non-profit organization) (Bellevue, WA)
Assistant to the Director
April – December 2004

Education:

- Master of Historic Preservation (MHP), 2007–2009.
 - University of Kentucky, Lexington, KY
 - Continuing Studies Courses in Cultural Resource Management, 2005-2006 (ongoing).
 - University of Victoria, Victoria, British Columbia, Canada
 - Technical Program Courses in Interior Design, 2005–2006.
 - Spokane Falls Community College, Spokane, WA
 - B.A. (Bachelor of the Arts, Focus: American History, Military History, Political Science), 2000–2003.
 - University of Victoria, Victoria, British Columbia, Canada
-

Academic Projects:

- Kentucky's Traditional Courthouses: Preservation in the Heart of the Community, 2009, (Master's Project).
- Establishing a Historic District, Historic Ruddles Mills, KY, 2009.
- Visual preference survey for the development of design guidelines within Kentucky's Rural Heritage Development Initiative region, 2008 – 2009 (Preserve America Grant funded project).
- Preservation Plan: Old Bath County Jail, Owingsville, KY, 2008.
- Historic Documentation of the Old Georgetown Road Tuberculosis Hospital, Lexington, KY, 2008.
- Cultural Historic Landscapes, Clark and Fayette Counties, KY, 2008.
- Historic Documentation Project at Waveland State Historic Site, Lexington, KY, 2008.

Academic Awards:

- Recipient, Dean's Prize in Historic Preservation, University of Kentucky, 2009. Presented to a graduating student for distinguished achievement, excellence in the master's project and professional promise.
 - Recipient, Beaux Arts Ball Scholarship, University of Kentucky, 2008. Awarded to selected students in the UK College of Design for use towards academic related summer travel.
 - Recipient, Clyde R. Carpenter Scholarship in Historic Preservation, University of Kentucky, 2008. Presented in recognition of distinguished achievement in the study of Historic Preservation.
 - Recipient, Graduate Research Assistantship, University of Kentucky, 2007 – 2009.
-

Professional Projects and Publications:

- Doyon, Ann Marie P.
2010 Ohio historic properties short survey forms completed for 840+ individual properties surveyed as part of the *Cultural Historic Survey for the Proposed Buckeye Wind Project in Champaign, Clark, Logan, Madison, and Union Counties, Ohio*. Project completed as sub-consultant.

- Doyon, Ann Marie P.
2010 Historic Context for HABS Level II Documentation of Ten Residential Quarters at the Former Fort Thomas Military Reservation, Fort Thomas, Campbell County, Kentucky. Contract Publication Series 10-102. Cultural Resource Analysts, Inc., Lexington, Kentucky. Prepared for United States Department of Veterans Affairs.
- Doyon, Ann Marie P.
2010 *Cultural Historic Survey for the Proposed Buckeye Wind Project in Champaign, Clark, Logan, Madison, and Union Counties, Ohio*. Contract Publication Series Not Yet Assigned. Cultural Resource Analysts, Inc., Hurricane, West Virginia. (In Progress). Prepared for the United States Department of Interior, Division of Fish and Wildlife in association with Everpower WindHoldings, Inc.
- Perez, Carlos and Paul D. Bundy, RPA with contributions by Ann Marie P. Doyon, Josh Hill, and Justin Morrison
2010 *An Initial Predictive Cultural Resource Inventory for the Proposed 100,000 Acre Fort Polk Land Purchase Program Including Areas of Interest to the North and East of the Existing Facility in Vernon and Rapides Parishes, Louisiana*. Contract Publication Series 09-217. Cultural Resource Analysts, Inc., Shreveport, Louisiana. Prepared for the Department of the Army in association with Gulf Engineers and Consultants.
- Spurlock, Trent, Ann Marie P. Doyon, Robert C. Whetsell, and Trent Margrif
2010 *Bedford Veterans Administration Hospital National Register of Historic Places Nomination*. (Bedford, Middlesex County, Massachusetts). Contract Publication Series 10-068. Cultural Resource Analysts, Inc., Lexington, Kentucky. (Status Pending). Prepared for United States Department of Veterans Affairs.
- Spurlock, Trent, Ann Marie P. Doyon, Matthew D. McMahan, and Rachel Bankowitz
2010 *Northampton Veterans Administration Hospital National Register of Historic Places Nomination*. (Northampton, Hampshire County, Massachusetts). Contract Publication Series 09-264. Cultural Resource Analysts, Inc., Lexington, Kentucky. (Status Pending). Prepared for United States Department of Veterans Affairs.
- Spurlock, Trent, Ann Marie P. Doyon, Robert C. Whetsell, and Robert Peltier
2010 *Coatesville Veterans Administration Hospital National Register of Historic Places Nomination*. (Coatesville, Chester County, Pennsylvania). Contract Publication Series 10-045. Cultural Resource Analysts, Inc., Lexington, Kentucky. (Status Pending). Prepared for United States Department of Veterans Affairs.
- Spurlock, Trent, Ann Marie P. Doyon, Robert C. Whetsell, and Jennifer Stewart
2010 *Canandaigua Veterans Administration Hospital National Register of Historic Places Nomination*. (Canandaigua, Ontario County, New York). Contract Publication Series 09-261. Cultural Resource Analysts, Inc., Lexington, Kentucky. (Status Pending). Prepared for United States Department of Veterans Affairs.
- Doyon, Ann Marie P., Elizabeth G. Heavrin, Ned Crankshaw, Joseph E. Brent, and Maria Campbell Brent
2010 *Rock Island Confederate Cemetery (Rock Island Arsenal) National Register of Historic Places Nomination*. (Rock Island, Rock Island County, Illinois). Contract Publication Series 10-081. Cultural Resource Analysts, Inc., Lexington, Kentucky. (Status Pending). Prepared for United States Department of Veterans Affairs.
2010 *Johnson's Island Confederate Stockade Cemetery (Johnson's Island Civil War Prison) National Register of Historic Places Nomination*. (Johnson's Island, Ottawa County, Ohio). Contract Publication Series 10-092. Cultural Resource Analysts, Inc., Lexington, Kentucky. (Status Pending). Prepared for United States Department of Veterans Affairs.
2010 *Woodlawn Cemetery Confederate Monument, Terre Haute, National Register of Historic Places Nomination*. (Woodlawn Cemetery, Vigo County, Indiana). Contract Publication Series 10-

083. Cultural Resource Analysts, Inc., Lexington, Kentucky. (Status Pending). Prepared for United States Department of Veterans Affairs.

2010 *Union Confederate Monument, Kansas City, National Register of Historic Places Nomination*. (Union Cemetery, Johnson County, Missouri). Contract Publication Series 10-087. Cultural Resource Analysts, Inc., Lexington, Kentucky. (Status Pending). Prepared for United States Department of Veterans Affairs.

2010 *Point Lookout Confederate Cemetery National Register of Historic Places Nomination*. (Point Lookout Confederate Cemetery, St. Mary's County, Maryland). Contract Publication Series 10-084. Cultural Resource Analysts, Inc., Lexington, Kentucky. (Status Pending). Prepared for United States Department of Veterans Affairs.

2010 *North Alton Confederate Cemetery National Register of Historic Places Nomination*. (North Alton Confederate Cemetery, Madison County, Illinois). Contract Publication Series 10-080. Cultural Resource Analysts, Inc., Lexington, Kentucky. (Status Pending). Prepared for United States Department of Veterans Affairs.

2010 *Oak Woods Cemetery, Confederate Mound National Register of Historic Places Nomination*. (Oak Woods Cemetery, Cook County, Illinois). Contract Publication Series 10-079. Cultural Resource Analysts, Inc., Lexington, Kentucky. (Status Pending). Prepared for United States Department of Veterans Affairs.

2010 *Camp Chase Site National Register of Historic Places Nomination (Amendment)*. (Camp Chase Confederate Cemetery, Franklin County, Ohio). Contract Publication Series 10-091. Cultural Resource Analysts, Inc., Lexington, Kentucky. (Status Pending). Prepared for United States Department of Veterans Affairs.

2010 *Finns Point National Cemetery National Register of Historic Places Nomination (Amendment)*. (Finns Point National Cemetery, Salem County, New Jersey). Contract Publication Series 10-088. Cultural Resource Analysts, Inc., Lexington, Kentucky. (Status Pending). Prepared for United States Department of Veterans Affairs.

2010 *Woodlawn Cemetery and Woodlawn National Cemetery National Register of Historic Places Nomination (Amendment)*. (Woodlawn National Cemetery, Chemung County, New York). Contract Publication Series 10-075. Cultural Resource Analysts, Inc., Lexington, Kentucky. (Status Pending). Prepared for United States Department of Veterans Affairs.

2010 *Camp Butler National Cemetery National Register of Historic Places Nomination (Amendment)*. (Amendment to national cemeteries included in the Civil War Era National Cemeteries Multiple Property Listing [MPL]), Camp Butler National Cemetery, Sangamon County, Illinois). Contract Publication Series 10-078. Cultural Resource Analysts, Inc., Lexington, Kentucky. (Status Pending). Prepared for United States Department of Veterans Affairs.

2010 *Cypress Hills National Cemetery National Register of Historic Places Nomination (Amendment)*. (Amendment to national cemeteries included in the Civil War Era National Cemeteries MPL), Cypress Hills National Cemetery, Kings/Queens Counties, New York). Contract Publication Series 10-089. Cultural Resource Analysts, Inc., Lexington, Kentucky. (Status Pending). Prepared for United States Department of Veterans Affairs.

2010 *Fort Smith National Cemetery National Register of Historic Places Nomination (Amendment)*. (Amendment to national cemeteries included in the Civil War Era National Cemeteries MPL), Fort Smith National Cemetery, Sebastian County, Arkansas). Contract Publication Series 10-076. Cultural Resource Analysts, Inc., Lexington, Kentucky. (Status Pending). Prepared for United States Department of Veterans Affairs.

2010 *Jefferson Barracks National Cemetery National Register of Historic Places Nomination (Amendment)*. (Amendment to national cemeteries included in the Civil War Era National Cemeteries MPL), Jefferson Barracks National Cemetery, St. Louis County, Missouri). Contract Publication Series 10-085. Cultural Resource Analysts, Inc., Lexington, Kentucky. (Status Pending). Prepared for United States Department of Veterans Affairs.

2010 *Philadelphia National Cemetery National Register of Historic Places Nomination (Amendment)*.

(Amendment to national cemeteries included in the Civil War Era National Cemeteries MPL), Philadelphia National Cemetery, Philadelphia County, Pennsylvania). Contract Publication Series 10-093. Cultural Resource Analysts, Inc., Lexington, Kentucky. (Status Pending). Prepared for United States Department of Veterans Affairs.

2010 *Springfield National Cemetery National Register of Historic Places Nomination (Amendment)*. (Amendment to national cemeteries included in the Civil War Era National Cemeteries MPL), Springfield National Cemetery, Greene County, Missouri). Contract Publication Series 10-086. Cultural Resource Analysts, Inc., Lexington, Kentucky. (Status Pending). Prepared for United States Department of Veterans Affairs.

2010 *Little Rock National Cemetery National Register of Historic Places Nomination (Amendment)*. (Amendment to national cemeteries included in the Civil War Era National Cemeteries MPL), Little Rock National Cemetery, Pulaski County, Arkansas). Contract Publication Series 10-077. Cultural Resource Analysts, Inc., Lexington, Kentucky. (Status Pending). Prepared for United States Department of Veterans Affairs.

- Doyon, Ann Marie P.
2010 *Cultural Historic Survey for the Proposed KY-1231 (Big Branch Road) Improvement Project, Knott County, Kentucky (Item No. 12-8200.00)*. Contract Publication Series 10-057. Cultural Resource Analysts, Inc., Lexington, Kentucky. Prepared for Kentucky Transportation Cabinet and the Federal Highway Administration.
- Doyon, Ann Marie P.
2010 *Cultural Historic Survey for the Proposed Widening of KY-44 East of Mt. Washington, Bullitt County, Kentucky (Item No. 5-347.50)*. Contract Publication Series 10-053. Cultural Resource Analysts, Inc., Lexington, Kentucky. Prepared for Kentucky Transportation Cabinet and the Federal Highway Administration.
- Doyon, Ann Marie P. and Kathryn M. Joseph
2010 *Cultural Historic Survey for the Proposed Morehead-Rowan County Airport Access Road in Fleming and Rowan Counties, Kentucky (Item No. 9-8502.00)*. Contract Publication Series 10-037. Cultural Resource Analysts, Inc., Lexington, Kentucky. Prepared for Kentucky Transportation Cabinet and the Federal Highway Administration.
- Doyon, Ann Marie P., Matthew D. McMahan and Kathryn M. Joseph
2010 *Cultural Historic Survey for the Proposed Belleview 69 KV Transmission Line Between KY-20 and KY-338 Northwest of Belleview in Boone County, Kentucky*. Contract Publication Series 10-013. Cultural Resource Analysts, Inc., Lexington, Kentucky. Prepared for Kentucky Power Cooperative on behalf of the Rural Utility Service.
- Doyon, Ann Marie P. with a contribution by Elizabeth G. Heavrin
2010 *Historic Context of Three West Louisville Neighborhood Schools: Atkinson Elementary School, Western Middle School, and Shawnee High School. Mitigation of Adverse Effects for Improvements to the Entrance to the University of Louisville Belknap Campus Oval (Project), Jefferson County, Kentucky*. Contract Publication Series 10-006. Cultural Resource Analysts, Inc., Lexington, Kentucky. Prepared for University of Louisville.
- Arnold, George C. and Kenneth R. Case, with a contribution by Ann Marie P. Doyon
2010 *A Cultural Resource Survey of a Proposed Amendment to the Existing T&T Energy, LLC, Coal Mine Operation Along Buck Branch in Perry County, Kentucky. (Permit Application Number 897-0513, Amendment 1)*. Contract Publication Series 10-022. Cultural Resource Analysts, Inc., Lexington, Kentucky. Prepared for Kentucky Department for Natural Resources, Division of Mine Permits.
- Doyon, Ann Marie P.
2010 *FCC Form 620 Submission Packet for the Proposed 299-ft Oddville Cellular Communications Tower in Harrison County, Kentucky*. Contract Publication Series 10-011. Cultural Resource Analysts, Inc., Lexington, Kentucky. Prepared for Federal Communications Commission.

- Doyon, Ann Marie P. and Kathryn M. Joseph
2010 *A Cultural Historic Assessment of the Proposed Harlan Reclamation Services, LLC Coal Mine Operation Along Looney Creek in Lynch, Harlan County, Kentucky* (Permit Application Number 848-5458). Contract Publication Series 09-247. Cultural Resource Analysts, Inc., Lexington, Kentucky. Prepared for Kentucky Department for Natural Resources, Division of Mine Permits.
- Doyon, Ann Marie P. and Kathryn M. Joseph
2009 *Cultural Historic Survey for the Proposed ecoPower General Biomass Facility in Northern Perry County, Kentucky*. Contract Publication Series 09-235. Cultural Resource Analysts, Inc., Lexington, Kentucky. Prepared for Public Service Commission.
- Doyon, Ann Marie P. and Kathryn M. Joseph
2009 *Cultural Historic Survey for the Proposed Reconstruction of KY-30 Between KY-847 and KY-11 west of Booneville, Owsley County, Kentucky*. Contract Publication Series 09-233. Cultural Resource Analysts, Inc., Lexington, Kentucky. Prepared for Kentucky Transportation Cabinet and the Federal Highway Administration.
- Doyon, Ann Marie P. and Kathryn M. Joseph
2009 *Cultural Historic Overview Survey for the Proposed Interchange at Elrod Road and Natcher Parkway South of Bowling Green in Warren County, Kentucky* (Item Number 3-130.00). Contract Publication Series 07-200. Cultural Resource Analysts, Inc., Lexington, Kentucky. Prepared for Kentucky Transportation Cabinet and the Federal Highway Administration.
- Doyon, Ann Marie P., Kathryn M. Joseph, Jason A. Baker, and C. Michael Anslinger, with contributions from Matthew D. McMahan and Robert C. Whetsell
2009 *Cultural Resource Survey for the Proposed Sutton Hydroelectric Project, Holly District, Braxton County, West Virginia*. Contract Publication Series WV09-59. Cultural Resource Analysts, Inc., Hurricane, West Virginia. Prepared for Federal Energy Regulatory Commission and United States Army Corps of Engineers (Huntington District).
- Doyon, Ann Marie P.
2009 FCC Form 620 Submission Packet for the Proposed 199-ft Woolridge Cellular Communications Tower in Hardin County, Kentucky. Contract Publication Series 09-185. Cultural Resource Analysts, Inc., Lexington, Kentucky. Prepared for Federal Communications Commission.
- Doyon, Ann Marie P. and Kathryn M. Joseph
2009 FCC Form 620 Submission Packet for the Proposed 130-ft Ninth Street Portland Cellular Communications Tower in Jefferson County, Kentucky. Contract Publication Series 09-164. Cultural Resource Analysts, Inc., Lexington, Kentucky. Prepared for Federal Communications Division.
- Heavrin, Elizabeth and Ann Marie P. Doyon
2009 *Cultural Historic Survey for the Proposed Extension of Cooper Chapel Road from Beulah Church Road to Bardstown Road in Southern Jefferson County, Kentucky* (5-404.01). Contract Publication Series 08-200. Cultural Resource Analysts, Inc., Lexington, Kentucky. Prepared for Kentucky Transportation Cabinet and the Federal Highway Administration.
- Joseph, Kathryn M. and Ann Marie P. Doyon
2009 *Historic Property Report for the Proposed Evansville Traffic Signal Modernization Project in Vanderburgh County, Indiana*. Contract Publication Series IN09-003. Cultural Resource Analysts, Inc., Evansville, Indiana. Prepared for Indiana Department of Transportation.
- Doyon, Ann Marie P.
2009 *Cultural Historic Survey for the Proposed Replacement of the Three Bridges and Approaches on KY-139 Over Donaldson Creek and Fork of Donaldson Creek in Caldwell County, Kentucky* (Item Number 2-1063.00). Contract Publication Series 09-143. Cultural Resource Analysts, Inc.,

Lexington, Kentucky. Prepared for Kentucky Transportation Cabinet and the Federal Highway Administration.

- Curran, Michael J., with contributions by Ann Marie P. Doyon
2009 *A Cultural Resource Survey of the Proposed Frasure Creek Mining, LLC, Coal Mine Operation Along Frasure Creek in Floyd County, Kentucky (Permit Application Number 836-0167 NW)*. Contract Publication Series 09-134. Cultural Resource Analysts, Inc., Lexington, Kentucky. Prepared for Kentucky Department for Natural Resources, Division of Mine Permits.
- Spurlock, Trent, Karen E. Hudson and Ann Marie P. Doyon
2009 *Montgomery Veterans' Administration Hospital National Register of Historic Places Nomination. (Central Alabama Veterans Health Care System – West Campus)*. Contract Publication Series 09-057. Cultural Resource Analysts, Inc., Lexington, Kentucky. (Status Pending). Prepared for United States Department of Veterans' Affairs.
- Doyon, Ann Marie P. and Trent Spurlock
2009 *Northport Veterans' Bureau Hospital (Veterans' Bureau Hospital No. 108) National Register of Historic Places Nomination. (Northport Veterans' Affairs Medical Center, Northport, New York)*. Contract Publication Series 09-158. Cultural Resource Analysts, Inc., Lexington, Kentucky. (Status Pending). Prepared for United States Department of Veterans' Affairs.
- Doyon, Ann Marie P. and Trent Spurlock
2009 *United States Veterans Bureau Hospital No. 100 (Camp Custer, Michigan) National Register of Historic Places Nomination. (Veterans Administration Medical Center, Battle Creek, Michigan)*. Contract Publication Series 09-145. Cultural Resource Analysts, Inc., Lexington, Kentucky. (Status Pending). Prepared for United States Department of Veterans' Affairs.
- Doyon, Ann Marie P.
2009 *Cultural Historic Survey for the Proposed Excess Material Fill Areas for the Reconstruction of KY- 32 in Lawrence County, Kentucky (Item No. 12-284.00)*. Contract Publication Series 08-109. Cultural Resource Analysts, Inc., Lexington, Kentucky. Prepared for United States Army Corps of Engineers and Kentucky Transportation Cabinet.
- Doyon, Ann Marie P. and Matthew D. McMahan
2009 *Cultural Historic Survey for the Proposed Sheldon Wind Farm in Iroquois County, Illinois*. Contract Publication Series 09-108. Cultural Resource Analysts, Inc., Lexington, Kentucky. Prepared for Illinois Historic Preservation Agency.
- Bybee, Alexandra D., RPA with contributions by Fred Banschbach, Ann Marie P. Doyon, and Jennifer M. Faberson
2009 *A Cultural Resource Survey of the Proposed McKee Waste Water Treatment Plant, Jackson County, Kentucky*. Contract Publication Series 09-042. Cultural Resource Analysts, Inc., Lexington, Kentucky.
- Kelley, Lisa J. and Paul D. Bundy, RPA with contributions by Jennifer M. Faberson and Ann Marie P. Doyon
2009 *A Cultural Resource Survey of the Proposed Fordson #1 and #2 Gas Well Locations within the Daniel Boone National Forest, Redbird Ranger District, Clay County, Kentucky*. Contract Publication Series 09-104. Cultural Resource Analysts, Inc., Lexington, Kentucky.
- Martin, Andrew V., RPA with contributions by Ann Marie Doyon, MHP and Jennifer M. Faberson
2009 *A Cultural Resource Survey of the Proposed Patriot Coal Company Major Amendment to the Area 3 Mine Operation in Henderson County, Kentucky (Permit Application Number 851-0045, Major Amendment 1)*. Contract Publication Series IN09-001. Cultural Resource Analysts, Inc., Lexington, Kentucky. Prepared for Kentucky Department for Natural Resources, Division of Mine Permits.