

IDAHO PERMIT AND APPLICATION FOR OVER-LEGAL PERMIT AND/OR
LOAD MOVEMENT - 1 TRIP ONLY 1-800-662-7133

COMPANY NAME

ACCT. NO. 2400375

AND ADDRESS

EMMERT INTERNATIONAL
15402 E HWY 35
DANBURY TX 77534

COLLECT **FEES PREPAID**

FAX (503) 650-2289

VIA MAILED

DESC OF VEH AND/OR LOAD

PERMIT VALID FROM 11/12/2010

TO 11/16/2010

COKE DRUM SECTION2

ORIGIN LEWISTON, ID

DESTINATION ID/MT BORDER-12

ORIGIN

DESTINATION

ROUTES 12

MILES 174

VEH TYPE: (X) TOWING UNIT () SELF-PROP (X) TRAILER (X) OTHER HAULED

LICENSE NO. YAFV982

000 BASE STATE OR

UNIT NO. 2470 SERIAL NO.

YEAR MAKE

AXLES 0 00 00 00 00 00 00 00 00 0 00

AXLE GP WT 16,060 40,444 83,466 83,466 95,418 96,414 96,414 96,414 16,000 40,000

NO OF TIRES 2 8 16 16 16 16 16 16 2 8

AXLE SPACING (FT/IN) 19-02 5-00 11-01 4-08 12-01 4-08 13-00 6-00 59-04 4-08

AXLE SPACING (FT/IN) 16-00 4-08 16-00 4-08 16-00 19-02 5-00

TIRE SIZE

O/ALL WIDTH 29' 00" BASE WIDTH RED RT WIDTH BLK & INT RT

NO AXLES 18 HEIGHT 28' 00" O/ALL LENGTH 227' O/HANG O/HANG

GW 664,096 LBS

SPECIAL REQUIREMENT (X) FLAGS (X) LIGHTS (X) SIGNS (X) 2-WAY RADIO COMM.

(X) PILOT VEHICLE AS PER TRAFFIC CONTROL PLAN APPROVED BY THE DISTRICT

(X) TIME OF TRAVEL PER TRAFFIC CONTROL PLAN APPROVED BY D-2 10PM TO 5:30AM

(X) OTHER

MIRRORS MUST ALLOW DRIVER TO SEE 200FT BEHIND LOAD - IF NOT REAR PILOT REQUIRED

FLAG 4 CORNERS AND EXTREMITIES OF LOAD WITH 18"X18" RED OR FLUORESCENT ORANGE

OVERSIZE LOAD SIGN SHALL BE DISPLAYED ON TOWING VEHICLE & LOAD

LOAD/TOW UNIT SIGNS:18"HI;7'WIDE;LETTER HEIGHT 10";SERIES C;STROKE WIDTH 1.41

ALL SIGNS IN IDAHO SHALL BE BLACK LETTERING ON YELLOW BACKGROUND

TRAFFIC CONTROL PLAN MUST ACCOMPANY PERMIT IN ORDER FOR PERMIT TO BE VALID

DISTRICT APPROVAL PER DORAL HOFF COPY OF THE BOND MUST ACCOMPANY ALL MOVES

PILOT SIGNS:10"HI; 5'WIDE; STANDARD SERIES B;LETTER HEIGHT 8";STROKE WIDTH 1"

TOW UNIT & PILOT/ESCORT VEHICLE SHALL BE EQUIPPED W/2-WAY RADIO LICENSED BY FCC

LOAD AND ALL EXTREMITIES MUST BE WELL LIT FOR NIGHT MOVEMENT

THESE WEIGHTS ARE APPROVED BY BRE 07/27/10 SHANON

BRIDGE APPROVAL REQUIREMENTS MUST ACCOMPANY PERMIT FOR PERMIT TO BE VALID

MUST FOLLOW ALL BRIDGE CROSSING REQUIREMENTS AS STATED ON BRIDGE APPROVAL

LOADS MUST HAVE HELPER DOLLIES WHEN CROSSING BRIDGES AT MP 14.96 78.82 & 120.09

SEE ATTACHED TRAVEL REQUIREMENTS PAGE FOR ADDITIONAL REQUIREMENTS NOT LISTED IN

TRAFFIC CONTROL PLAN. PERMIT NOT VALID UNTIL MONTANA PERMIT HAS BEEN ISSUED

HELPER DOLLIES WILL WEIGH 32,000 LBS EACH AND OTHER AXLES WILL WEIGH LESS

TOTAL GROSS WEIGHT WITH HELPER DOLLIES IS 675,500

VALID FOR STATE HWYS & ADA COUNTY, OTHER LOCAL ROUTES SUBJECT

TO LOCAL APPROVAL. PERMITTEE IS RESONSIBLE FOR VERTICAL

ID = \$2,143.00

CLEARANCES AND ANY DAMAGE/COST TO TRAFFIC CONTROL DEVICE(S).

*C.CARD \$2,143.00

APPLICANTS ACCEPTANCE OF PERMIT CERTIFIES VEHICLE/LOAD HAS

BEEN REDUCED TO PRACTICAL MINIMUM SIZE/WEIGHT AND THEY SHALL

COMPLY WITH ALL APPLICABLE STATE/FEDERAL LAWS, RULES AND REGS.

TIME 4:08 PM

PERMIT NUM

DATE 11/10/2010

11008321

BY REGGIE P

ISSUED BY IDAHO

SIGNATURE OF APPLICANT

2



ITD OVERLOAD VEHICLE BRIDGE PERMIT

Permit No. _____

B

BRIDGE ANALYSIS BY:

ANALYST:	Shanon Murgoitio, P.E.
DATE:	7/30/2010
TIME:	3:00 P.M.
The attached configuration was analyzed for all bridges on US 12 between MP 2.45 and MP 174.42.	

PERMIT REQUEST FOR:

COMPANY:	Emmert International
UNIT:	BID
DRAWING NO.:	G091302-01-11 (see attached)
Vehicle configuration is recorded on the attached sheets This document is not valid without these attachments.	

STATUS:

Request Approved with Special Requirements

SPECIAL BRIDGE REQUIREMENTS:

The load exceeds the normal capacity of all the bridges on the route listed above. The load may travel US 12 from MP 2.45 to MP 174.42 with special requirements. **The load must travel down the center of all bridges, be the only vehicle on each bridge, and have front and rear pilot cars while crossing each bridge. Additional requirements apply to the bridges listed in the chart below.**

Route	Milepost	Requirements (in addition to those listed above)	Traffic Control
US 12 (Arrow Bridge)	14.960	<ul style="list-style-type: none"> * Helper dollies must be added as depicted in Emmert G091302-01-16 before the load may cross the bridge. * The push truck may not be on the bridge with the load. * Speed must not exceed 5 mph * The bridge deck must be full depth in all locations (9" min.) * New deck overlay material must have a strength of 3.5 ksi confirmed by cylinder break before the load may cross. * No additional loads may be on the bridge while the load crosses. (construction equipment, temporary construction barrier, etc.) 	* See "Additional Requirements" below.
US 12 (Maggie Creek)	78.820	<ul style="list-style-type: none"> * Helper dollies must be added as depicted in Emmert G091302-01-16 before the load may cross the bridge. * Speed must not exceed 20 mph 	
US 12 (Fish Creek)	120.098	<ul style="list-style-type: none"> * Helper dollies must be added as depicted in Emmert G091302-01-16 before the load may cross the bridge. * Speed must not exceed 5 mph 	
US 12 (Squaw Creek)	153.808	<ul style="list-style-type: none"> * Speed must not exceed 20 mph 	

Special Bridge Requirements continued on next page.

B

SPECIAL BRIDGE REQUIREMENTS CONTINUED:

Route	Milepost	Requirements (in addition to those listed above)	Traffic Control
US 12 (Crooked Creek)	169.681	* Speed must not exceed 5 mph	

ADDITIONAL REQUIREMENTS:

The Arrow Bridge is currently under construction. If the load plans to travel before the completion of the construction contract, in addition to coordinating all travel plans with the Idaho Transportation Department, Emmert must also coordinate with the Contractor.

B

ITD TRAVEL REQUIREMENTS
FOR
CONOCO/PHILIPS – EMMERT

US12

10 Minute Traffic Delay

Oncoming traffic shall not be delayed greater than 10 minutes, except at those points listed in the traffic control plan under the Idaho Traffic Management tab. In those few identified areas the carrier will make every reasonable effort to limit the delays of oncoming traffic to as close to 10 minutes as possible, while maintaining the safety and integrity of the transport. Traffic may follow the load, but following traffic shall not be required to **stop** for more than 10 minutes before they are cleared to pass. There are 12 zones where Emmert will be allowed to exceed the 10 minute time frame which are attached.

To ensure safe public travel during the move, Emmert is authorized to barricade the approved turnouts for exclusive use for the wide loads up to 24 hours in advance for each move.

Travel Restrictions

Enroute Travel - Tires of the tractor and trailer shall stay within the fog line, except when exiting the roadway at approved turnout traffic clearing locations. The carrier has identified 5 locations where the load tires will cross the fogline but remain on the paved surface; M.P. 48.5, 48.7, 52.6, 54.3 and 157. These areas have been identified as having guardrail. The outside tires will not extend closer than 1.0 foot to the face of rail at any time nor will the guardrail be allowed to be moved. Emmert will furnish ¾ inch plywood to be laid down in front of the tires as the load progresses should the shoulder show distress to distribute the load as it passes by each location per recommendation of Emmert's engineer as outlined in your letter dated November 10, 2010.

The outside tires shall be illuminated to allow for inspection of this requirement.

No parking will be allowed in the Lolo Pass Visitor Center Area. Summit parking at the snowplow turnaround shall be limited to 3 hours for a brake and safety check etc.

Night time travel is required and shall not start before 10 pm and shall not continue past 5:30 am. Travel is allowed 7 days a week, except for holidays and holiday weekends. Travel on designated holidays will not be allowed. (i.e. Thanksgiving, Christmas and New Years, etc.)

Highway traffic shall not be diverted onto an unpaved surface.

Emmert International Primary Pull Offs - Coke Drums

B

No.	MP	HWY	Miles Travel	Time (mins)	Description	Action	Designated pull offs
ID - DAY 1							
1			1	10	Depart Port Of Lewiston	On Or Around 11PM	
2		6th Street	0.5	5	Traveling East There Is No Impact To Utilities On This Route	Hold Traffic In Intersections And Pass Safely	Use Shoulder To Allow Traffic To Proceed
3		ID 128	0.2	5	Traveling East There Is No Impact To Utilities On This Route	Hold Traffic In Intersections And Pass Safely	
4	2.5	ID 12	0.2	5	Cross Intersection	Traffic Control With Signage And Flaggers	Use Truck Stop To Allow Traffic To Proceed
5	2.6	7th Street	0.1	5	Traveling East There Is No Impact To Utilities On This Route	Traffic Control With Signage And Flaggers	
6		Frontage Road	0.9	5	Traveling East There Is No Impact To Utilities On This Route	Traffic Control With Signage And Flaggers	Using Shoulder To Hold Transport To Allow Traffic To Continue
7	305	Hwy 95	1.7	5	Turn Onto US 12 And Proceed East	Pilot Cars Flaggers And Signage	This Area Will Be Used To Move All Traffic Around The Loads
8	11.7	US 12	8.2	10	Gondola Cable Crossing Over Highway	USGS HAS REMOVED CABLE	
9	12.2	US 12	0.5	5	Scenic Turnout - Spalding Mission	Flaggers And Signage	This Is A Blacktop Area. Traffic Will Go Around Load Using The Blacktop Area As The Load Holds In The Road.
10	15	US 12	2.8		Arrow Bridge	Flaggers And Signage - concrete divider will be completely removed from bridge prior to crossing and replaced after passage of two loads.	Hold Traffic While Transport Is On Bridge
11	15-514 16.2	US 12 US 12	1.2	8	FLAGGER STATION Rest Area		
12	20.2	US 12	4	10	Road Expands To 3 Lanes	Pilot Cars And Signage	Hold Load Right Move Traffic Around Both Ways
	21.1	US 12			FLAGGER STATION		
	23	US 12			FLAGGER STATION		
13	24.4	US 12	4.2	10	Turn Out In Front Of The Convenience Store At Rose Bud Lane	Flaggers And Signage	Hold Traffic Here Move Load Through Safely
14	26.8	US 12	2.4	7	3 Lane Road		
15	27.6	US 12	0.8	5	Wide Area North Side Of Roadway Rock And Paved	Flaggers And Signage	Hold Traffic On Paved Area Pass With Transport
	28.4	US 12			FLAGGER STATION		
16	31.5	US 12	3.9	10	Turn Out	Flaggers And Signage	Hold Traffic Here Move Load Through Safely
17	34.7	US 12	3.2	10	3 Lanes - Big Canyon Memorial	Pilot Cars And Signage	Hold Load Right Move Traffic Around Both Ways
	34.9	US 12			FLAGGER STATION		
18	38.8	US 12	4.1	7	Large Turn Out 210' X 50'	Pilot Cars And Signage	Park Load Here Move Traffic Around.
	38.8	PARK	39.9	122	PARK FOR THE NIGHT JUST OUTSIDE OROFINO		

ID - DAY 2									
1	38.8	US 12	0	10	Start Heading East On US 12	On Or Around 11PM	Hold Transport Right Direct Traffic Around		
2	39.7	US 12	0.9		Four Lane From 39.7 To 44.0	Pilot Cars And Signage	Hold Transport Right Direct Traffic Around		
3	39.8	US 12			FLAGGER STATION				
	46	US 12	6.3	15	3 Lanes	Pilot Cars And Signage	Hold Load In Right Lane Move Traffic Around Both Directions		
	46.6	US 12			FLAGGER STATION				
4	48.5	US 12	2.5	5	Rock Wall	Flagger And Signage	Lean Transporter And Travel Around Corner Then Level For Transport		
5	48.8	US 12	0.3	5	Turn Out 200' X 40'	Flagger And Signage	Hold Load In Wide Area Move Traffic Around		
6	49.4	US 12	0.6	5	Wide Rock And Paved Area	Flagger And Signage	Hold Traffic On Paved Area Allow Transport To Pass.		
	49.5	US 12			FLAGGER STATION				
7	51.6	US 12	2.2	5	Hwy 11 Intersection - 3 Lanes	Pilot Cars And Signage	Hold Load Right Move Traffic Around.		
8	53.1	US 12	1.5	5	3 Lanes To MM 53.8	Pilot Cars And Signage	Hold Transport Right Direct Traffic Around		
	54.1	US 12			FLAGGER STATION				
9	54.7	US 12	1.6	5	3 Lanes To MM 54.9	Pilot Cars And Signage	Hold Transport Right Direct Traffic Around		
10	58.6	US 12	3.9	10	Turn Out On Left Side	Flagger And Signage	Stop Traffic Load Will Proceed Around Traffic		
	58.7	US 12			FLAGGER STATION				
11	58.7	US 12	0.1	5	Concrete Barriers				
12	60.8	US 12	2.1	7	3 Lanes To MM 61.0	Pilot Cars And Signage	Hold Transport Right Direct Traffic Around		
13	61	US 12	0.2	5	N Side Large Area	Flagger And Signage	Hold Load In Area And Move Traffic Around		
	61.1	US 12			FLAGGER STATION				
14	65.1	US 12	4.1	10	3 Lane To MM 65.6	Pilot Cars And Signage	Hold Transport Right Direct Traffic Around		
15	65.7	US 12	0.6	5	Wide Rock And Paved Area	Flagger And Signage	Hold Traffic Allow Transport To Pass		
	65.75	US 12			FLAGGER STATION				
16	65.9	US 12	0.2	5	Kamiah Idaho	Flagger And Signage	Hold Traffic On Side Roads Allow Transport To Pass		
17	67.5	US 12	1.6	8	Turn Out Just After The Bridge	Flagger And Signage	Hold Traffic Until The Load Crosses The Bridge		
	68.3	US 12			FLAGGER STATION				
18	71.4	US 12	3.9	7	South Side Turn Out	Flagger And Signage	Hold Load And Move Traffic Around		
19	73.7	US 12	2.3	5	Weigh Station Turn Out				
	73.7	PARK	34.9	122	PARK FOR THE NIGHT				

B

ID - DAY 3									
ID	Start	US 12	0	10	Start Heading East On US 12	On Or Around 11PM	Hold Transport And Direct Traffic Around	On Or Around 11PM	Hold Transport And Direct Traffic Around
1	73.7	US 12	0	10	Start Heading East On US 12	Flagger And Signage	Hold Transport And Direct Traffic Around	Flagger And Signage	Hold Transport And Direct Traffic Around
2	77.4	US 12	3:6	8	Pull Off On South Side Of ID 12 That Could Be Utilized For Traffic Relief. Measures 250' X 25'.	Flagger And Signage	Hold Transport And Direct Traffic Around	Flagger And Signage	Hold Transport And Direct Traffic Around
3	77.6	US 12			FLAGGER STATION				
4	81.1	US 12	3:7	10	Using Traffic Control Proceed Under Condola	Pilot Cars And Signage	Transporter Continues Transport	Pilot Cars And Signage	Transporter Continues Transport
5	82.6	US 12	1:5	10	Pull Off That Could Be Utilized For Traffic Relief. Measures 300' X 32'.	Flagger And Signage	Hold Transport And Direct Traffic Around	Flagger And Signage	Hold Transport And Direct Traffic Around
6	83.1	US 12	0:5	5	Hold Traffic In Large Paved Intersection	Flagger And Signage	Hold Traffic Allow Transport To Park	Flagger And Signage	Hold Traffic Allow Transport To Park
	83.2	US 12			FLAGGER STATION				
	88.6	US 12			FLAGGER STATION				
7	91.5	US 12	8:4	15	Pull Off That Measures 220' X 27'.	Flagger And Signage	Hold Transport And Direct Traffic Around	Flagger And Signage	Hold Transport And Direct Traffic Around
	92.8	US 12			FLAGGER STATION				
8	95.3	US 12	3:8	10	Paved Pull Off At Wild Goose Campground That Measures 190' X 52'.	Flagger And Signage	Hold Transport And Direct Traffic Around	Flagger And Signage	Hold Transport And Direct Traffic Around
9	97.2	US 12	1:9	7	Cougar Store Backstop Parking Area, Traffic Control Area	Flagger And Signage	Stop Traffic On Paved Area Allow Transport To Pass	Flagger And Signage	Stop Traffic On Paved Area Allow Transport To Pass
	97.3	US 12			FLAGGER STATION				
10	103.7	US 12	6:5	15	Large Area East Bound Side 175' X 18'	Flagger And Signage	Hold Transport And Direct Traffic Around	Flagger And Signage	Hold Transport And Direct Traffic Around
	103.9	US 12			FLAGGER STATION				
	107.1	US 12			FLAGGER STATION				
11	109.9	US 12	6:2	15	Traffic Control Area 80' X 15'	Flagger And Signage	Hold Transport And Direct Traffic Around	Flagger And Signage	Hold Transport And Direct Traffic Around
	110.6	US 12			FLAGGER STATION				
	116	US 12			FLAGGER STATION				
12	116.6	US 12	6:7	15	Rock Wall Along ID 12 And Potential Pull Off That Could Be Utilized For Traffic Relief. Paved And Rock, Measures 220' X 25'.	Flagger And Signage	Hold Transport Move Traffic Around	Flagger And Signage	Hold Transport Move Traffic Around
13	117.6	US 12	1	5	Point Of Interest Area, Paved Area	Flagger And Signage	Hold Transport Move Traffic Around	Flagger And Signage	Hold Transport Move Traffic Around
	120.3	US 12	2:7	10	Fish Creek Rest Area. Measures 500' X 100'. Area Could Accommodate Parking Of Two Transporters.	Emergency Stop Only		Emergency Stop Only	
	120.73	US 12			FLAGGER STATION				
	125	US 12			FLAGGER STATION				
14	126.9	US 12	6:6	15	PARK FOR THE NIGHT AT LARGE PULL OFF THAT MEASURES 300 X 70	Flagger And Signage	Hold Traffic Allow Transport To Park	Flagger And Signage	Hold Traffic Allow Transport To Park
	126.9	US 12	53:1	140	PARK FOR THE NIGHT				

ID - DAY 4									
1	126.9	US 12	0	5	Depart Parking Area	Flaggers And Signage	Hold Transport Direct Traffic Around		
	127	US 12			FLAGGER STATION				
2	128	US 12	1:1	5	Section Of ID 12 Consisting Of Three Lanes.				
3	130.3	US 12	2:3	10	Pull Off Measures 250' X 55'.	Flaggers And Signage	Hold Transport Direct Traffic Around		
4	132.5	US 12	2:2	10	View Of Potential Parking Area And/OR Pull Off Area. Measures 450' X 60'.				
	132.6	US 12			FLAGGER STATION				
	135.4	US 12			FLAGGER STATION				
5	135.7	US 12	3:2	10	Pull Off. Measures 290' X 32'.				
6	138.4	US 12	2:7	10	Large Paved Area For Traffic Control	Flaggers And Signage	Hold Transport Direct Traffic Around		
7	139.1	US 12	0:7	5	Large Paved Pull Off That Measures 400' X 100'. This Could Be Used For Parking Or Traffic Relief.	Flaggers And Signage	Hold Traffic In Wide Spot As Load Passes.		
	139.4	US 12			FLAGGER STATION		Hold Transport Direct Traffic Around		
8	142.4	US 12	3:3	10	Slow Moving Traffic Turnout Lane That Could Be Used To Clear Traffic.				
9	143.2	US 12	0:8	5	Large Pull Off That Could Be Utilized For Parking. Measures 600' X 80'.	Flaggers And Signage	Hold Transport Direct Traffic Around		
	143.3	US 12			FLAGGER STATION				
10	146.5	US 12	3:3	10	Pull Off That Measures 275' X 40'.	Flaggers And Signage	Hold Transport Direct Traffic Around		
11	147.6	US 12	1:1	5	Large Paved Area For Traffic Control	Flaggers And Signage	Hold Transport Direct Traffic Around		
	147.7	US 12			FLAGGER STATION		Hold Transport Allow Traffic To Pass		
12	151.7	US 12	4:1	12	Pull Off That Can Be Utilized For Traffic Relief. Measures 250' X 55'.	Flaggers And Signage	Hold Transport Direct Traffic Around		
13	152.9	US 12	1:2	5	Pull Off That Can Be Used For Parking. Measures 500' X 50'.	Flaggers And Signage	Hold Transport Direct Traffic Around		
	153	US 12			FLAGGER STATION				
14	153.8	US 12	0:9	5	Pull Off On North Side Of ID 12 Just After Bridge Crossing. Measures 250' X 45' And Can Be Utilized For Traffic Relief.	Flaggers And Signage	Hold Traffic In Wide Spot As Load Crosses Bridge		
	158.5	US 12			FLAGGER STATION				
15	158.5	US 12	4:7	15	Road Is Three Lanes Up To MM 159.	Pilot Cars And Signage	Hold Transport Direct Traffic Around		
	160	US 12			FLAGGER STATION				
16	160	US 12	1:5	8	Large Pull Off On South Side Of ID 12 That Can Be Utilized For Traffic Relief. Measures 300' X 50'. Use Only If Needed	Flaggers And Signage	Hold Transport Direct Traffic Around		
	163.5	US 12			FLAGGER STATION				
17	163.5	US 12	3:5	12	Large Rock And Paved Area For Traffic Control	Flaggers And Signage	Hold Traffic Allow Transporter To Pass		
18	165	US 12	1:5	10	Pull Off On South Side Of ID 12 That Can Be Utilized For Traffic Relief. Measures 225' X 35'.	Flaggers And Signage	Hold Or Slow Transport Direct Traffic Around		

Emmert International Primary Pull Offs - Coke Drums

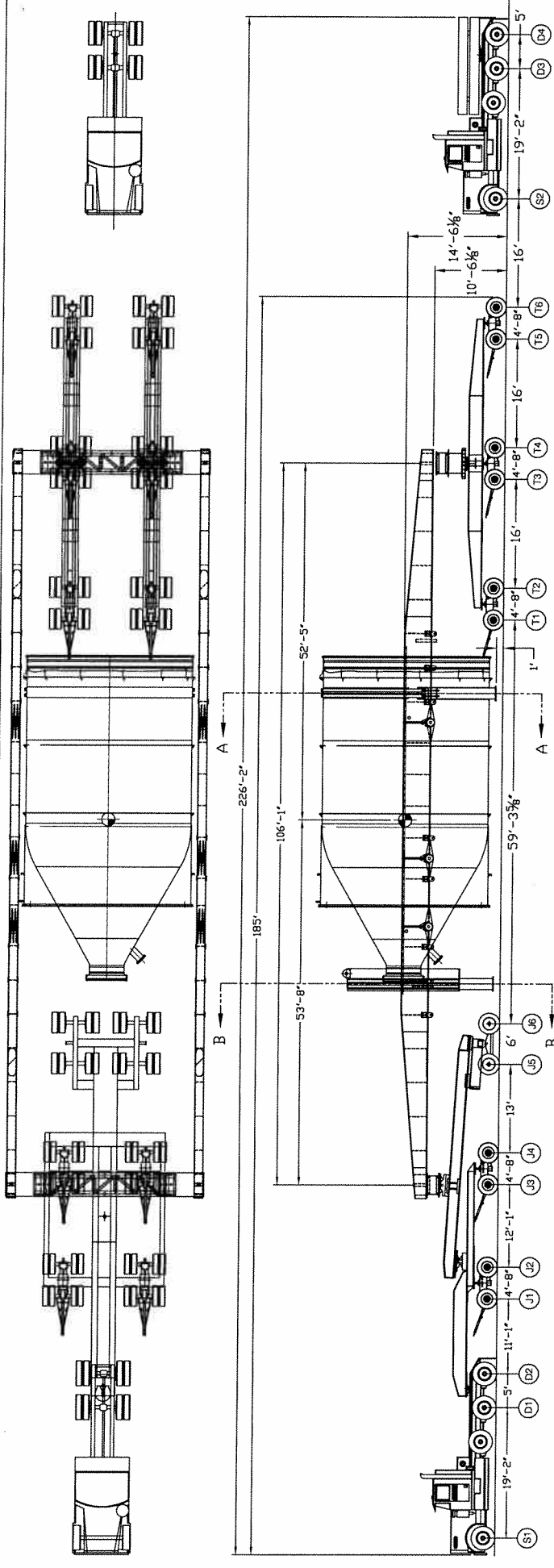
19	165.7	US 12	0.7	10	Pull Off That Can Be Utilized For Traffic Relief. Measures 400' X 75'. FLAGGER STATION	Flaggers And Signage	Hold Or Slow Transport Direct Traffic Around
	165.8	US 12					
20	167.5	US 12	1.8	10	Pull Off That Can Be Utilized For Traffic Relief. Measures 200' X 40'. FLAGGER STATION	Flaggers And Signage	Hold Or Slow Transport Direct Traffic Around
	167.6	US 12					
21	168.6	US 12	1.1	10	Pull Off That Can Be Utilized For Traffic Relief. Measures 200' X 40'. FLAGGER STATION	Flaggers And Signage	Hold Or Slow Transport Direct Traffic Around
	169	US 12					
22	169	US 12	0.4	10	Large Chain Up Area That Measures 450' X 70'. Could Be A Parking Area. Emergency Call Box Location For Dispatch To ISP. ISP Will Be Accompanying Load The Entire Way.	Flaggers And Signage	Hold Or Slow Transport Direct Traffic Around
23	169.9	US 12	0.9	10	Start 3 Lanes To MM 170.5 FLAGGER STATION	Flaggers And Signage	Hold Transport Right Allow Traffic To Follow Pilot Car
	170.5	US 12					
24	171.1	US 12	1.2	15	Pull Off On North Side Of ID 12. Measures 350' X 56'. FLAGGER STATION	Flaggers And Signage	Hold Or Slow Transport Direct Traffic Around
25	171.5	US 12	0.4	10	Start 3 Lanes To MM 172.0	Flaggers And Signage	Hold Transport Right Allow Traffic To Follow Pilot Car
26	172	US 12	0.5	15	Pull Off That Measures 350' X 40'. FLAGGER STATION	Flaggers And Signage	Hold Or Slow Transport Direct Traffic Around
	172.1	US 12					
27	174.2	US 12	2.2	15	Rest Area Across From Visitors Center At Lolo Pass. FLAGGER STATION	Flaggers And Signage	Hold Or Slow Transport Direct Traffic Around
	174.39	US 12					
		PARK	47.3	257	PARK FOR NIGHT - JUST OVER ID/MT BORDER		

LINE ITEMS IN GREEN SIGNIFY FLAGGER STATION

LINE ITEMS IN ORANGE HIGHLIGHT SIGNIFY PROPOSED PARKING AREAS EACH NIGHT

Note: Emmert has proposed to add a third truck to the load at IDT's request in order to increase average speed of the load up the Lolo Pass grade, just past the Crooked Fork Road.

	Miles	Time
ID-Day 1	39.9	122
ID-Day 2	34.9	122
ID-Day 3	53.1	140
ID-Day 4	47.3	257
Total Idaho Travel	175.2	516



This configuration may cross every bridge on US 12 between MP 2.45 and MP 174.42 with special requirements (see above) with the exception of the following bridges.

Arrow Bridge at MP 14.960
 Maggie Creek at MP 78.820
 Fish Creek at MP 120.098
 Helper dollies (as shown in drawing no. G091302-01-16) must be added for the load to cross the above listed bridges.

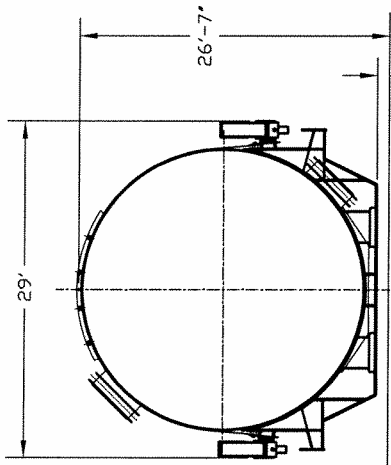
Axle	Tare Weight	Net Weight	Gross lbs	Wheels per line	Load-lbs per Wheel	Tire Width	Lat inch Loading
Pull Truck							
S1	13500	2560	16060.1	2	8030.0546	14	574 lbs/in
D1	10750	9472	20222.4	4	5056	11	460 lbs/in
D2	10750	9472	20222.4	4	5056	11	460 lbs/in
4-Dolly Jeep							
J1	16900	24833	41733.1	8	5217	11	474 lbs/in
J2	16900	24833	41733.1	8	5217	11	474 lbs/in
J3	16900	24833	41733.1	8	5217	11	474 lbs/in
J4	16900	24833	41733.1	8	5217	11	474 lbs/in
2-Dolly Jeep							
J5	17500	30209	47709.3	8	5964	11	542 lbs/in
J6	17500	30209	47709.3	8	5964	11	542 lbs/in
6-Dolly Transporter							
T1	15950	32257	48207.4	8	6026	11	548 lbs/in
T2	15950	32257	48207.4	8	6026	11	548 lbs/in
T3	15950	32257	48207.4	8	6026	11	548 lbs/in
T4	15950	32257	48207.4	8	6026	11	548 lbs/in
T5	15950	32257	48207.4	8	6026	11	548 lbs/in
T6	15950	32257	48207.4	8	6026	11	548 lbs/in
Total	233,300	374900	608,100	106			
Push Truck							
S2	16000	0	16000	2	8000	14	571 lbs/in
D3	20000	0	20000	4	5000	11	455 lbs/in
D4	20000	0	20000	4	5000	11	455 lbs/in
Total	289,300	374900	664,100	116			

REV	DATE	DESCRIPTION	NAME
3	2/17/10	CHANGE DRAWING NUMBER	PC
2	1/21/10	SADDLE MODIFICATION	PC
1	10/22/09	CHS WEIGHT CHART	PC

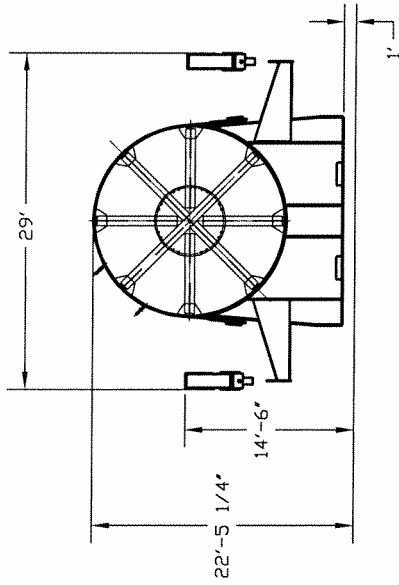
15101 S.E. Highway 212
 P.O. Box 978
 Coalinga, CA 93211
 Phone: (805) 862-7919
 Fax: (805) 862-7919
 1-800-979-8270 (Toll Free)
 P. O. Box 978
 Coalinga, CA 93211
 Phone: (805) 862-7919
 Fax: (805) 862-7919

EMMERT INTERNATIONAL
 TRANSPORTATION VIEW
 12 DOLLY SUSPENSION BEAM SYSTEM
 LOWER COKE DRUM SECTION

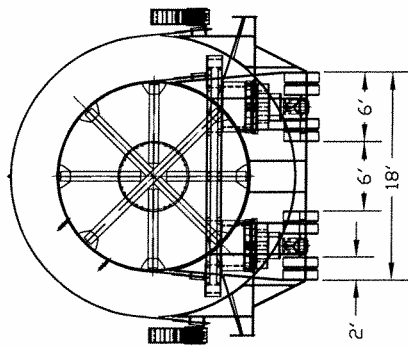
BY: JOHN P. WELCH
 DATE: 02-21-2009
 DRAWING NUMBER: G091302-01-11
 SHEET: 3
 PROJECT: BRIDGE, MT
 SCALE: NONE
 DRAWN BY: G091302



SECTION A-A



SECTION B-B



END ELEVATION

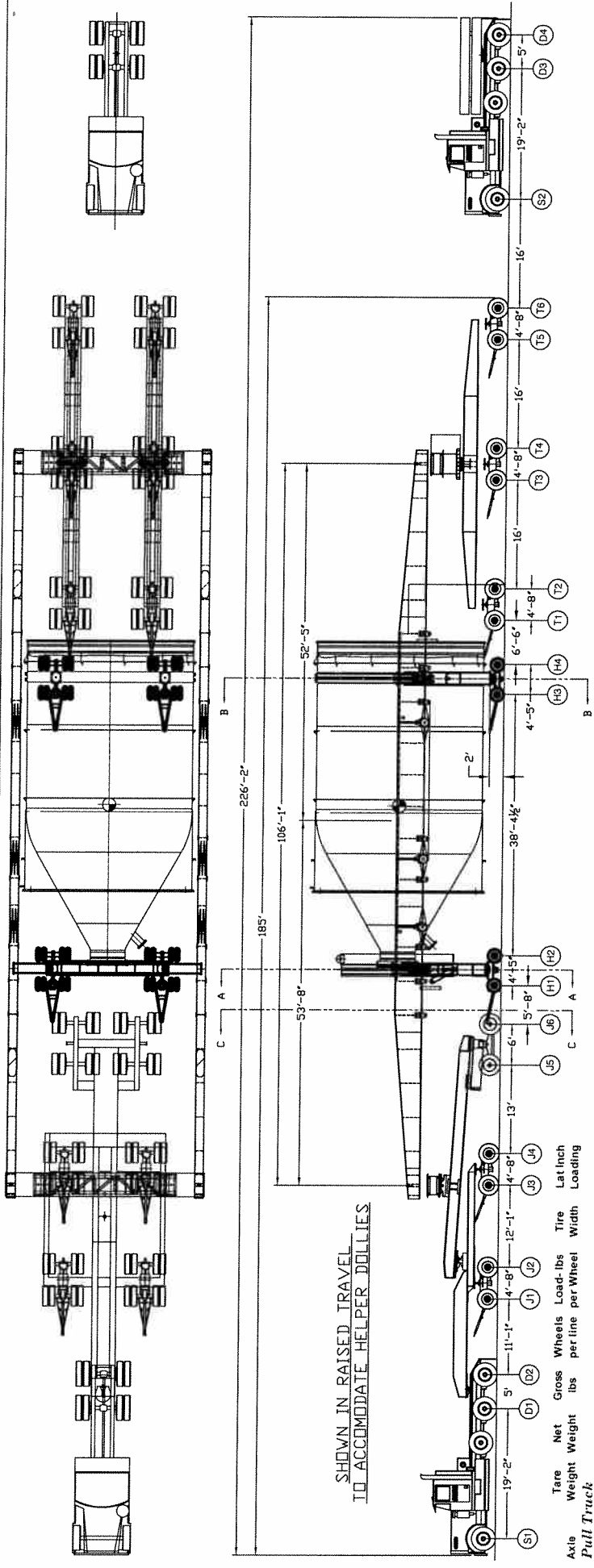
REV	DATE	DESCRIPTION	NAME	PC
3	2/17/10	CHANGE DRAWING NUMBER		PC
2	1/21/10	SADDLE MODIFICATION		PC
1	10/22/09	CHG WEIGHT CHART		PC

EMMERT INTERNATIONAL
 1502 Highway 26 East
 P. O. Box 978
 Phillips, Vermont 05757
 Phone: (877) 682-7191
 Fax: (877) 682-7192
 11811 S.E. Highway 212
 P.O. Box 978
 Phillips, Vermont 05757
 Phone: (877) 682-7191
 Fax: (877) 682-7192

TRANSPORTATION VIEW
 12 DOLLY SUSPENSION BEAM SYSTEM
 LOWER COKE DRUM SECTION

BY: JOHN P. WELCH	DATE: 09-31-2009	SCALE: 1:122	PROJECT: G-091302
DRAWN BY: JOHN P. WELCH	DATE: 09-31-2009	SHEET: 2	TOTAL SHEETS: 3
DRAWING NUMBER: G091302-01-11		REVISION: 3	

B



Helper dollies must be added as shown above for the load to cross the bridges listed below.
 Arrow Bridge at MP 14.960
 Maggie Creek at MP 78.820
 Fish Creek at MP 120.098

Axle	Tare Weight	Net Weight	Gross Weight	Wheels per line	Load-lbs per Wheel	Tire Width	Tire	Lat Inch	Load-lbs
Pull Truck									
S1	13500	1764	15264	2	7632	14	545 lbs/in		
D1	10750	6526	17276	4	4319	11	393 lbs/in		
D2	10750	6526	17276	4	4319	11	393 lbs/in		
4-Dolly Jeep									
J1	16900	17108	34007.5	8	4251	11	386 lbs/in		
J2	16900	17108	34007.5	8	4251	11	386 lbs/in		
J3	16900	17108	34007.5	8	4251	11	386 lbs/in		
J4	16900	17108	34007.5	8	4251	11	386 lbs/in		
2-Dolly Jeep									
J5	17500	20811	38311	8	4789	11	435 lbs/in		
J6	17500	20811	38311	8	4789	11	435 lbs/in		
Helper Dollies									
H1	2850	29150	32000	8	4000	9	444 lbs/in		
H2	2850	29150	32000	8	4000	9	444 lbs/in		
H3	2850	29150	32000	8	4000	9	444 lbs/in		
H4	2850	29150	32000	8	4000	9	444 lbs/in		
6-Dolly Transporter									
T1	15950	22222	38172	8	4772	11	434 lbs/in		
T2	15950	22222	38172	8	4772	11	434 lbs/in		
T3	15950	22222	38172	8	4772	11	434 lbs/in		
T4	15950	22222	38172	8	4772	11	434 lbs/in		
T5	15950	22222	38172	8	4772	11	434 lbs/in		
T6	15950	22222	38172	8	4772	11	434 lbs/in		
Total	244,700	374,800	619,500	138					
Push Truck									
S2	16000	0	16000	2	8000	14	571 lbs/in		
D3	20000	0	20000	4	5000	11	455 lbs/in		
D4	20000	0	20000	4	5000	11	455 lbs/in		
Total	300,700	374,800	675,500	148					

Current Project: S01302 - Conoco/Phillips Billings 11 Drawings: Current: DWG: S01302-01-16 Permit Drum 2 HD.dwg, 3/2/2010 3:48:11 PM, 1:171.157

REV	DATE	DESCRIPTION	RAC	NAME
1	3/01/2010	ADDED LOW PROFILE HELPER DOLLIES		

THE INFORMATION ON THIS DRAWING IS UNCLASSIFIED EXCEPT WHERE SHOWN OTHERWISE. IT IS THE PROPERTY OF EMMERT INTERNATIONAL AND IS NOT TO BE REPRODUCED OR TRANSMITTED IN ANY FORM OR BY ANY MEANS, ELECTRONIC OR MECHANICAL, INCLUDING PHOTOCOPYING, RECORDING, OR BY ANY INFORMATION STORAGE AND RETRIEVAL SYSTEM, WITHOUT THE EXPRESS WRITTEN PERMISSION OF EMMERT INTERNATIONAL. THIS DRAWING IS UNCLASSIFIED EXCEPT WHERE SHOWN OTHERWISE. IT IS THE PROPERTY OF EMMERT INTERNATIONAL AND IS NOT TO BE REPRODUCED OR TRANSMITTED IN ANY FORM OR BY ANY MEANS, ELECTRONIC OR MECHANICAL, INCLUDING PHOTOCOPYING, RECORDING, OR BY ANY INFORMATION STORAGE AND RETRIEVAL SYSTEM, WITHOUT THE EXPRESS WRITTEN PERMISSION OF EMMERT INTERNATIONAL.

EMMERT INTERNATIONAL
 15101 S.E. Highway 215
 Gladstone, OR 97030
 Phone: 503-762-7878
 Fax: 503-762-7878
 P.O. Box 978
 Gladstone, OR 97030
 Phone: 503-762-7878
 Fax: 503-762-7878

TRANSPORTATION NEW 10 DOLLY SUSPENSION BEAM SYSTEM W/ HELPER DOLLIES ON MAGGIE CREEK DRUM #2 AT MAGGIE CREEK MM 76.82 & FISH CREEK MM 120

BY: P. CALLAGHAN
 DATE: 2.15.10
 SCALE: NONE
 DRAWING NUMBER: G091302-01-16
 SHEET: 1

B

EMMERT

INTERNATIONAL

ENGINEERED TRANSPORT - RIGGING - STRUCTURE RELOCATION

HIGHWAY MARINE RAIL

WHEREAS EMMERT INDUSTRIAL CORP., dba EMMERT INTERNATIONAL ("Emmert") and the IDAHO TRANSPORTATION DEPARTMENT ("ITD")(collectively "Parties")wish to amend and restate Emmert's Indemnification Obligation to ITD; and,

WHEREAS Emmert acknowledges and agrees that under the laws of the State of Idaho, the courts of the State of Idaho will have personal and subject matter jurisdiction over actions against Emmert arising out of any wrongful acts or failures to act committed by Emmert in Idaho while Emmert transports cargo for ConocoPhillips; and,

WHEREAS Emmert has obtained insurance coverage specifically to cover liability that may arise and has made ITD an additional insured with waiver of subrogation under said policy and which policy includes coverage for damage to public and private property; and,

WHEREAS Emmert acknowledges that the insurance policy reflected in the Certificate of Liability Insurance attached hereto as Exhibit A is intended to also protect private individuals and public and private entities from bodily injury and property damage arising out of an "occurrence" during Emmert's utilization of roadways and infrastructures in Idaho for the purpose of transporting cargo for ConocoPhillips for the coke drum transportation project.

THE PARTIES HEREBY AGREE:

Emmert Industrial Corp. ("Emmert"), dba Emmert International, shall indemnify, defend and hold harmless the Idaho Transportation Department ("ITD")and the general public, to the limits of the policy reflected in the Certificate of Liability Insurance attached hereto as Exhibit A, from and against any and all claims for damage, during and arising out of Emmert's utilization of roadways and infrastructures in Idaho for the purpose of transporting cargo for ConocoPhillips for the coke drum transportation project. Emmert agrees to assume and bear the full risk of loss, up to the available limits of the policy attached as Exhibit A, for any injury and/or damage to public or private property, during and arising from an "occurrence" while crossing over the state's roadways and infrastructure during the coke drum transportation project

This agreement shall replace and supersede that certain Hold Harmless Agreement signed by Terry Michael Emmert on or about August 16, 2010

Emmert International
Terry M. Emmert



by its Vice President

11-8-10

Date

B

Exhibit A

ACORD CERTIFICATE OF LIABILITY INSURANCE		DATE (MM/DD/YYYY) 9/21/2010
PRODUCER (541) 687-1117 FAX: (541) 342-8280 Ward Insurance Agency P O Box 10167		THIS CERTIFICATE IS ISSUED AS A MATTER OF INFORMATION ONLY AND CONFERS NO RIGHTS UPON THE CERTIFICATE HOLDER. THIS CERTIFICATE DOES NOT AMEND, EXTEND OR ALTER THE COVERAGE AFFORDED BY THE POLICIES BELOW.
Eugene OR 97440	INSURERS AFFORDING COVERAGE	
INSURED	INSURER A: Scottsdale Insurance Co.	NAIC #
Emmert Industrial Corp.	INSURER B: American States Insurance	19704
11811 SE Highway 212	INSURER C: Westchester Fire Ins. Co.	
Clackamas OR 97015	INSURER D:	
	INSURER E:	

COVERAGES

THE POLICIES OF INSURANCE LISTED BELOW HAVE BEEN ISSUED TO THE INSURED NAMED ABOVE FOR THE POLICY PERIOD INDICATED. NOTWITHSTANDING ANY REQUIREMENT, TERM OR CONDITION OF ANY CONTRACT OR OTHER DOCUMENT WITH RESPECT TO WHICH THIS CERTIFICATE MAY BE ISSUED OR MAY PERTAIN. THE INSURANCE AFFORDED BY THE POLICIES DESCRIBED HEREIN IS SUBJECT TO ALL THE TERMS, EXCLUSIONS AND CONDITIONS OF SUCH POLICIES. AGGREGATE LIMITS SHOWN MAY HAVE BEEN REDUCED BY PAID CLAIMS.

INSR ADD'L LTR INSRD	TYPE OF INSURANCE	POLICY NUMBER	POLICY EFFECTIVE DATE (MM/DD/YY)	POLICY EXPIRATION DATE (MM/DD/YY)	LIMITS
A	GENERAL LIABILITY	BCS0022710	9/21/2010	9/21/2011	EACH OCCURRENCE \$ 1,000,000
	<input checked="" type="checkbox"/> COMMERCIAL GENERAL LIABILITY				DAMAGE TO RENTED PREMISES (Ea occurrence) \$ 50,000
	<input type="checkbox"/> CLAIMS MADE <input checked="" type="checkbox"/> OCCUR				MED EXP (Any one person) \$ Excluded
	<input checked="" type="checkbox"/> HOOK LIABILITY				PERSONAL & ADV INJURY \$ 1,000,000
	<input checked="" type="checkbox"/> OVER THE ROAD				GENERAL AGGREGATE \$ 2,000,000
	GENL AGGREGATE LIMIT APPLIES PER				PRODUCTS - COM/CP AGG \$ 1,000,000
	<input type="checkbox"/> POLICY <input checked="" type="checkbox"/> PRO-ECT <input type="checkbox"/> LCC				
B	AUTOMOBILE LIABILITY	01CI28837220	9/21/2010	9/21/2011	COMBINED SINGLE LIMIT (Ea accident) \$ 1,000,000
	<input checked="" type="checkbox"/> ANY AUTO				BODILY INJURY (Per person) \$
	<input type="checkbox"/> ALL OWNED AUTOS				BODILY INJURY (Per accident) \$
	<input type="checkbox"/> SCHEDULED AUTOS				PROPERTY DAMAGE (Per accident) \$
	<input checked="" type="checkbox"/> HIRED AUTOS				
	<input checked="" type="checkbox"/> NON-OWNED AUTOS				
	GARAGE LIABILITY				AUTO ONLY - EA ACCIDENT \$
	<input type="checkbox"/> ANY AUTO				OTHER THAN EA ACC \$
					AUTO ONLY - AGG \$
C	EXCESS/UMBRELLA LIABILITY	G2416272201	9/21/2010	9/21/2011	EACH OCCURRENCE \$ 10,000,000
	<input checked="" type="checkbox"/> OCCUR <input type="checkbox"/> CLAIMS MADE				AGGREGATE \$ 10,000,000
	<input type="checkbox"/> DEDUCTIBLE				
	<input checked="" type="checkbox"/> RETENTION \$ 10,000				
	WORKERS COMPENSATION AND EMPLOYERS' LIABILITY				NO STATU TORY LIMITS
	ANY PROPRIETOR/PARTNER/EXECUTIVE OFFICER/MEMBER EXCLUDED?				EL EACH ACCIDENT \$
	If yes, describe under SPECIAL PROVISIONS below				EL DISEASE - EA EMPLOYEE \$
	OTHER				EL DISEASE - POLICY LIMIT \$

DESCRIPTION OF OPERATIONS/LOCATIONS/VEHICLES/EXCLUSIONS ADDED BY ENDORSEMENT/SPECIAL PROVISIONS
 IDAHO DEPARTMENT OF TRANSPORTATION IS AN ADDITIONAL INSURED WITH WAIVER OF SUBROGATION. PROTECTION OF IDAHO DEPARTMENT OF TRANSPORTATION ROADWAYS AND INFRASTRUCTURES (ALL OPERATIONS) FOR ANY DAMAGES INCURRED DURING TRANSPORTATION OF CONOCOPHILLIPS COKE DRUMS. (AS ISSUED BY IDOT PERMIT APPROVAL).

CERTIFICATE HOLDER (208) 334-8000 IDAHO TRANSPORTATION DEPARTMENT 3311 W. STATE STREET P.O. BOX 7129 BOISE, ID 83707-1129	CANCELLATION SHOULD ANY OF THE ABOVE DESCRIBED POLICIES BE CANCELLED BEFORE THE EXPIRATION DATE THEREOF, THE ISSUING INSURER WILL ENDEAVOR TO MAIL <u>30</u> DAYS WRITTEN NOTICE TO THE CERTIFICATE HOLDER NAMED TO THE LEFT, BUT FAILURE TO DO SO SHALL IMPOSE NO OBLIGATION OR LIABILITY OF ANY KIND UPON THE INSURER, ITS AGENTS OR REPRESENTATIVES. AUTHORIZED REPRESENTATIVE Paul Jensen/DANAK
---	---

7ms
 11-8-10

IDAHO PERMIT AND APPLICATION FOR OVER-LEGAL PERMIT AND/OR
LOAD MOVEMENT - 1 TRIP ONLY 1-800-662-7133

COMPANY NAME

EMMERT INTERNATIONAL
15402 E HWY 35
DANBURY

ACCT. NO. 2400375

AND ADDRESS

TX 77534

COLLECT **FEES PREPAID**

FAX (503) 650-2289

VIA MAILED

DESC OF VEH AND/OR LOAD

PERMIT VALID FROM 11/12/2010

TO 11/16/2010

COKE DRUM SECTION1

ORIGIN LEWISTON, ID

DESTINATION ID/MT BORDER-12

ORIGIN

DESTINATION

ROUTES 12

MILES 174

VEH TYPE: (X) TOWING UNIT () SELF-PROP (X) TRAILER (X) OTHER HAULED

LICENSE NO. YAFV983

000 BASE STATE OR

UNIT NO. 2471 SERIAL NO.

YEAR MAKE

AXLES	0	00	00	00	00	00	00	00	00	0	00
AXLE GP WT	16,000	40,000	90,208	90,208	90,208	87,860	87,860	87,860	16,000	40,000	40,000
NO OF TIRES	2	8	16	16	16	16	16	16	2	8	8
AXLE SPACING (FT/IN)	19-02	5-00	16-04	4-08	14-00	4-08	14-00	4-08	54-01	4-08	4-08
AXLE SPACING (FT/IN)	14-00	4-08	14-00	4-08	18-00	19-02	5-00				
TIRE SIZE											
O/ALL WIDTH	29' 00"	BASE	WIDTH	RED RT	WIDTH	BLK & INT RT					
NO AXLES	18	HEIGHT	28' 00"	O/ALL LENGTH	226'	O/HANG	O/HANG				
GW	646,204	LBS									

SPECIAL REQUIREMENT (X) FLAGS (X) LIGHTS (X) SIGNS (X) 2-WAY RADIO COMM.
(X) PILOT VEHICLE AS PER TRAFFIC CONTROL PLAN APPROVED BY THE DISTRICT
(X) TIME OF TRAVEL PER TRAFFIC CONTROL PLAN APPROVED BY D-2 10PM TO 5:30AM
(X) OTHER

MIRRORS MUST ALLOW DRIVER TO SEE 200FT BEHIND LOAD - IF NOT REAR PILOT REQUIRED
FLAG 4 CORNERS AND EXTREMITIES OF LOAD WITH 18"X18" RED OR FLUORESCENT ORANGE
OVERSIZE LOAD SIGN SHALL BE DISPLAYED ON TOWING VEHICLE & LOAD
LOAD/TOW UNIT SIGNS:18"HI;7'WIDE;LETTER HEIGHT 10";SERIES C;STROKE WIDTH 1.41
ALL SIGNS IN IDAHO SHALL BE BLACK LETTERING ON YELLOW BACKGROUND
TRAFFIC CONTROL PLAN MUST ACCOMPANY PERMIT IN ORDER FOR PERMIT TO BE VALID
DISTRICT APPROVAL PER DORAL HOFF COPY OF THE BOND MUST ACCOMPANY ALL MOVES
PILOT SIGNS:10"HI; 5'WIDE; STANDARD SERIES B;LETTER HEIGHT 8";STROKE WIDTH 1"
TOW UNIT & PILOT/ESCORT VEHICLE SHALL BE EQUIPPED W/2-WAY RADIO LICENSED BY FCC
LOAD AND ALL EXTREMITIES MUST BE WELL LIT FOR NIGHT MOVEMENT
THESE WEIGHTS ARE APPROVED BY BRE 07/27/10 SHANON
BRIDGE APPROVAL REQUIREMENTS MUST ACCOMPANY PERMIT FOR PERMIT TO BE VALID
MUST FOLLOW ALL BRIDGE CROSSING REQUIREMENTS AS STATED ON BRIDGE APPROVAL
LOADS MUST HAVE HELPER DOLLIES WHEN CROSSING BRIDGES AT MP 14.96 78.82 & 120.09
SEE ATTACHED TRAVEL REQS PAGE FOR ADDITIONAL REQS NOT LISTED IN TRAFFIC CONTROL
PLAN PERMIT NOT VALID UNTIL MONTANA PERMIT HAS BEEN ISSUED
HELPER DOLLIES WILL BE 32,000 LBS EACH AND OTHER AXLES WILL WEIGH LESS
TOTAL WEIGHT WITH HELPER DOLLIES WILL BE 657,604 LBS

VALID FOR STATE HWYS & ADA COUNTY, OTHER LOCAL ROUTES SUBJECT
TO LOCAL APPROVAL. PERMITTEE IS RESONSIBLE FOR VERTICAL CLEARANCES AND ANY DAMAGE/COST TO TRAFFIC CONTROL DEVICE(S). ID = \$2,094.00
APPLICANTS ACCEPTANCE OF PERMIT CERTIFIES VEHICLE/LOAD HAS *C.CARD \$2,094.00
BEEN REDUCED TO PRACTICAL MINIMUM SIZE/WEIGHT AND THEY SHALL
COMPLY WITH ALL APPLICABLE STATE/FEDERAL LAWS, RULES AND REGS.

SIGNATURE OF APPLICANT

TIME 4:07 PM PERMIT NUM
DATE 11/10/2010 11008320
BY REGGIE P ISSUED BY IDAHO



**ITD OVERLOAD VEHICLE
BRIDGE PERMIT**

Permit No. _____
A



BRIDGE ANALYSIS BY:

ANALYST:	Shanon Murgotio, P.E.
DATE:	7/30/2010
TIME:	3:00 P.M.
The attached configuration was analyzed for all bridges on US 12 between MP 2.45 and MP 174.42.	

PERMIT REQUEST FOR:

COMPANY:	Emmert International
UNIT:	BID
DRAWING NO.:	G091302-01-12 (see attached)
Vehicle configuration is recorded on the attached sheets. This document is not valid without these attachments.	

STATUS:

Request Approved with Special Requirements

SPECIAL BRIDGE REQUIREMENTS:

The load exceeds the normal capacity of all the bridges on the route listed above. The load may travel US 12 from MP 2.45 to MP 174.42 with special requirements. **The load must travel down the center of all bridges, be the only vehicle on each bridge, and have front and rear pilot cars while crossing each bridge. Additional requirements apply to the bridges listed in the chart below.**

Route	Milepost	Requirements (in addition to those listed above)	Traffic Control
US 12 (Arrow Bridge)	14.960	<ul style="list-style-type: none"> * Helper dollies must be added as depicted in Emmert G091302-01-17 before the load may cross the bridge. * The push truck may not be on the bridge with the load. * Speed must not exceed 5 mph * The bridge deck must be full depth in all locations (9" min.) * New deck overlay material must have a strength of 3.5 ksi confirmed by cylinder break before the load may cross. * No additional loads may be on the bridge while the load crosses. (construction equipment, temporary construction barrier, etc.) 	* See "Additional Requirements" below.
US 12 (Maggie Creek)	78.820	<ul style="list-style-type: none"> * Helper dollies must be added as depicted in Emmert G091302-01-17 before the load may cross the bridge. * Speed must not exceed 20 mph 	
US 12 (Fish Creek)	120.098	<ul style="list-style-type: none"> * Helper dollies must be added as depicted in Emmert G091302-01-17 before the load may cross the bridge. * Speed must not exceed 5 mph 	
US 12 (Squaw Creek)	153.808	<ul style="list-style-type: none"> * Speed must not exceed 20 mph 	

Special Bridge Requirements continued on next page.

A

SPECIAL BRIDGE REQUIREMENTS CONTINUED:

Route	Milepost	Requirements (in addition to those listed above)	Traffic Control
US 12 (Crooked Creek)	169.681	* Speed must not exceed 5 mph	

ADDITIONAL REQUIREMENTS:

The Arrow Bridge is currently under construction. If the load plans to travel before the completion of the construction contract, in addition to coordinating all travel plans with the Idaho Transportation Department, Emmert must also coordinate with the Contractor.

ITD TRAVEL REQUIREMENTS
FOR
CONOCO/PHILIPS – EMMERT

US12

10 Minute Traffic Delay

Oncoming traffic shall not be delayed greater than 10 minutes, except at those points listed in the traffic control plan under the Idaho Traffic Management tab. In those few identified areas the carrier will make every reasonable effort to limit the delays of oncoming traffic to as close to 10 minutes as possible, while maintaining the safety and integrity of the transport. Traffic may follow the load, but following traffic shall not be required to **stop** for more than 10 minutes before they are cleared to pass. There are 12 zones where Emmert will be allowed to exceed the 10 minute time frame which are attached.

To ensure safe public travel during the move, Emmert is authorized to barricade the approved turnouts for exclusive use for the wide loads up to 24 hours in advance for each move.

Travel Restrictions

Enroute Travel - Tires of the tractor and trailer shall stay within the fog line, except when exiting the roadway at approved turnout traffic clearing locations. The carrier has identified 5 locations where the load tires will cross the fogline but remain on the paved surface; M.P. 48.5, 48.7, 52.6, 54.3 and 157. These areas have been identified as having guardrail. The outside tires will not extend closer than 1.0 foot to the face of rail at any time nor will the guardrail be allowed to be moved. Emmert will furnish $\frac{3}{4}$ inch plywood to be laid down in front of the tires as the load progresses should the shoulder show distress to distribute the load as it passes by each location per recommendation of Emmert's engineer as outlined in your letter dated November 10, 2010.

The outside tires shall be illuminated to allow for inspection of this requirement.

No parking will be allowed in the Lolo Pass Visitor Center Area. Summit parking at the snowplow turnaround shall be limited to 3 hours for a brake and safety check etc.

Night time travel is required and shall not start before 10 pm and shall not continue past 5:30 am. Travel is allowed 7 days a week, except for holidays and holiday weekends. Travel on designated holidays will not be allowed. (i.e. Thanksgiving, Christmas and New Years, etc.)

Highway traffic shall not be diverted onto an unpaved surface.

Emmert International Primary Pull Offs - Coke Drums

No.	MP	HWY	Miles Travel	Time (mins)	Description	Action	Designated pull offs
ID - DAY 1							
1			1	10	Depart. Port Of Lewiston	On Or Around 11PM	
2		6th Street	0.5	5	Traveling East There Is No Impact To Utilities On This Route	Hold Traffic In Intersections And Pass Safely	Use Shoulder To Allow Traffic To Proceed
3		ID 128	0.2	5	Traveling East There Is No Impact To Utilities On This Route	Hold Traffic In Intersections And Pass Safely	
4	2.5	ID 12	0.2	5	Cross Intersection	Traffic Control With Signage And Flaggers	Use Truck Stop To Allow Traffic To Proceed
5	2.6	7th Street	0.1	5	Traveling East There Is No Impact To Utilities On This Route	Traffic Control With Signage And Flaggers	
6		Frontage Road	0.9	5	Traveling East There Is No Impact To Utilities On This Route	Traffic Control With Signage And Flaggers	Using Shoulder To Hold Transport To Allow Traffic To Continue
7	305	Hwy 95	1.7	5	Turn Onto US 12 And Proceed East	Pilot Cars Flaggers And Signage	This Area Will Be Used To Move All Traffic Around The Loads
8	11.7	US 12	8.2	10	Gondola Cable Crossing Over Highway	USGS HAS REMOVED CABLE	
9	12.2	US 12	0.5	5	Scenic Turnout - Spalding Mission	Flaggers And Signage	This Is A Blacktop Area. Traffic Will Go Around Load Using The Blacktop Area As The Load Holds In The Road.
10	15	US 12	2.8		Arrow Bridge	Flaggers And Signage - concrete divider will be completely removed from bridge prior to crossing and replaced after passage of two loads.	Hold Traffic While Transport Is On Bridge
11	15.514	US 12			FLAGGER STATION		
	16.2	US 12	1.2	8	Rest Area		
12	20.2	US 12	4	10	Road Expands To 3 Lanes	Pilot Cars And Signage	Hold Load Right Move Traffic Around Both Ways
	21.1	US 12			FLAGGER STATION		
	23	US 12			FLAGGER STATION		
13	24.4	US 12	4.2	10	Turn Out In Front Of The Convenience Store At Rose Bud Lane	Flaggers And Signage	Hold Traffic Here Move Load Through Safely
14	26.8	US 12	2.4	7	3 Lane Road		
15	27.6	US 12	0.8	5	Wide Area North Side Of Roadway Rock And Paved	Flaggers And Signage	Hold Traffic On Paved Area Pass With Transport
	28.4	US 12			FLAGGER STATION		
16	31.5	US 12	3.9	10	Turn Out	Flaggers And Signage	Hold Traffic Here Move Load Through Safely
17	34.7	US 12	3.2	10	3 Lanes - Big Canyon Memorial	Pilot Cars And Signage	Hold Load Right Move Traffic Around Both Ways
	34.9	US 12			FLAGGER STATION		
18	38.8	US 12	4.1	7	Large Turn Out 210' X 50'	Pilot Cars And Signage	Park Load Here Move Traffic Around.
	38.8	PARK	39.9	122	PARK FOR THE NIGHT JUST OUTSIDE OROFINO		

7

A

ID - DAY 2									
	38.8	US 12	0	10	Start Heading East On US 12	On Or Around 11PM			
1	38.8	US 12	0	10	Start Heading East On US 12	On Or Around 11PM			
2	39.7	US 12	0.9		Four Lane From 39.7 To 44.0	Pilot Cars And Signage			Hold Transport Right Direct Traffic Around
3	39.8	US 12			FLAGGER STATION				
3	46	US 12	6.3	15	3 Lanes	Pilot Cars And Signage			Hold Load In Right Lane Move Traffic Around Both Directions
4	46.6	US 12			FLAGGER STATION				
4	48.5	US 12	2.5	5	Rock Wall	Flagger And Signage			Lean Transporter And Travel Around Corner Then Level For Transport
5	48.8	US 12	0.3	5	Turn Out 200' X 40'	Flagger And Signage			Hold Load In Wide Area Move Traffic Around
6	49.4	US 12	0.6	5	Wide Rock And Paved Area	Flagger And Signage			Hold Traffic On Paved Area Allow Transport To Pass.
7	49.5	US 12			FLAGGER STATION				
7	51.6	US 12	2.2	5	Hwy 11 Intersection - 3 Lanes	Pilot Cars And Signage			Hold Load Right Move Traffic Around.
8	53.1	US 12	1.5	5	3 Lanes To MM 53.8	Pilot Cars And Signage			Hold Transport Right Direct Traffic Around
9	54.1	US 12			FLAGGER STATION				
9	54.7	US 12	1.6	5	3 Lanes To MM 54.9	Pilot Cars And Signage			Hold Transport Right Direct Traffic Around
10	58.6	US 12	3.9	10	Turn Out On Left Side	Flagger And Signage			Stop Traffic Load Will Proceed Around Traffic
11	58.7	US 12	0.1	5	FLAGGER STATION				
11	58.7	US 12			Concrete Barriers				
12	60.8	US 12	2.1	7	3 Lanes To MM 61.0	Pilot Cars And Signage			Hold Transport Right Direct Traffic Around
13	61	US 12	0.2	5	N Side Large Area	Flagger And Signage			Hold Load In Area And Move Traffic Around
14	61.1	US 12			FLAGGER STATION				
14	65.1	US 12	4.1	10	3 Lane To MM 65.6	Pilot Cars And Signage			Hold Transport Right Direct Traffic Around
15	65.7	US 12	0.6	5	Wide Rock And Paved Area	Flagger And Signage			Hold Traffic Allow Transport To Pass
16	65.75	US 12			FLAGGER STATION				
16	65.9	US 12	0.2	5	Kamiah Idaho	Flagger And Signage			Hold Traffic On Side Roads Allow Transport To Pass
17	67.5	US 12	1.6	8	Turn Out Just After The Bridge	Flagger And Signage			Hold Traffic Until The Load Crosses The Bridge
18	68.3	US 12			FLAGGER STATION				
18	71.4	US 12	3.9	7	South Side Turn Out	Flagger And Signage			Hold Load And Move Traffic Around
19	73.7	US 12	2.3	5	Weigh Station Turn Out				
19	73.7	PARK	34.9	122	PARK FOR THE NIGHT				

ID - DAY 3									
1	73.7	US 12	0	10	Start Heading East On US 12	On Or Around 11PM			
2	77.4	US 12	3.6	8	Pull Off On South Side Of ID 12 That Could Be Utilized For Traffic Relief. Measures 250' X 25'.	Flagger And Signage			Hold Transport And Direct Traffic Around
3	77.6	US 12			FLAGGER STATION				
4	81.1	US 12	3.7	10	Using Traffic Control Proceed Under Gondola	Pilot Cars And Signage			Transporter Continues Transport
5	82.6	US 12	1.5	10	Pull Off That Could Be Utilized For Traffic Relief. Measures 300' X 32'.	Flagger And Signage			Hold Transport And Direct Traffic Around
6	83.1	US 12	0.5	5	Hold Traffic In Large Paved Intersection	Flagger And Signage			Hold Traffic Allow Transport To Park
	83.2	US 12			FLAGGER STATION				
	88.6	US 12			FLAGGER STATION				
7	91.5	US 12	8.4	15	Pull Off That Measures 220' X 27'.	Flagger And Signage			Hold Transport And Direct Traffic Around
	92.8	US 12			FLAGGER STATION				
8	95.3	US 12	3.8	10	Paved Pull Off At Wild Goose Campground That Measures 190' X 52'.	Flagger And Signage			Hold Transport And Direct Traffic Around
9	97.2	US 12	1.9	7	Cougar Store Blacktop Parking Area, Traffic Control Area	Flagger And Signage			Stop Traffic On Paved Area Allow Transport To Pass
	97.3	US 12			FLAGGER STATION				
10	103.7	US 12	6.5	15	Large Area East Bound Side 175' X 18'	Flagger And Signage			Hold Transport And Direct Traffic Around
	103.9	US 12			FLAGGER STATION				
	107.1	US 12			FLAGGER STATION				
11	109.9	US 12	6.2	15	Traffic Control Area 80' X 15'	Flagger And Signage			Hold Traffic Move Traffic Around
	110.6	US 12			FLAGGER STATION				
	116	US 12			FLAGGER STATION				
12	116.6	US 12	6.7	15	Rock Wall Along ID 12 And Potential Pull Off That Could Be Utilized For Traffic Relief. Paved And Rock, Measures 220' X 25'.	Flagger And Signage			Hold Transport Move Traffic Around
13	117.6	US 12	1	5	Point Of Interest Area, Paved Area	Flagger And Signage			Hold Traffic Move Traffic Around
	120.3	US 12	2.7	10	Fish Creek Rest Area. Measures 500' X 100'. Area Could Accommodate Parking Of Two Transporters.	Emergency Stop Only			
	120.73	US 12			FLAGGER STATION				
	125	US 12			FLAGGER STATION				
14	126.9	US 12	6.6	15	PARK FOR THE NIGHT AT LARGE PULL OFF THAT MEASURES 300 X 70	Flagger And Signage			Hold Traffic Allow Transport To Park
	126.9	US 12	53.1	140	PARK FOR THE NIGHT				

D

ID - DAY 4									
1	126.9	US 12	0	5	Depart Parking Area	Flagger And Signage	Hold Transport Direct Traffic Around		
	127	US 12			FLAGGER STATION				
2	128	US 12	1.1	5	Section Of Id 12 Consisting Of Three Lanes.				
3	130.3	US 12	2.3	10	Pull Off Measures 250' X 55'.	Flagger And Signage	Hold Transport Direct Traffic Around		
4	132.5	US 12	2.2	10	View Of Potential Parking Area And/Or Pull Off Area. Measures 450' X 60'.				
	132.6	US 12			FLAGGER STATION				
	135.4	US 12			FLAGGER STATION				
5	135.7	US 12	3.2	10	Pull Off. Measures 290' X 32'.	Flagger And Signage	Hold Transport Direct Traffic Around		
6	138.4	US 12	2.7	10	Large Paved Area For Traffic Control	Flagger And Signage	Hold Traffic In Wide Spot As Load Passes.		
7	139.1	US 12	0.7	5	Large Paved Pull Off That Measures 400' X 100'. This Could Be Used For Parking Or Traffic Relief.	Flagger And Signage	Hold Transport Direct Traffic Around		
	139.4	US 12			FLAGGER STATION				
8	142.4	US 12	3.3	10	Slow Moving Traffic Turnout Lane That Could Be Used To Clear Traffic.				
9	143.2	US 12	0.8	5	Large Pull Off That Could Be Utilized For Parking. Measures 600' X 80'.	Flagger And Signage	Hold Transport Direct Traffic Around		
	143.3	US 12			FLAGGER STATION				
10	146.5	US 12	3.3	10	Pull Off That Measures 275' X 40'.	Flagger And Signage	Hold Transport Direct Traffic Around		
11	147.6	US 12	1.1	5	Large Paved Area For Traffic Control	Flagger And Signage	Hold Transport Allow Traffic To Pass		
	147.7	US 12			FLAGGER STATION				
12	151.7	US 12	4.1	12	Pull Off That Can Be Utilized For Traffic Relief. Measures 250' X 55'.	Flagger And Signage	Hold Transport Direct Traffic Around		
13	152.9	US 12	1.2	5	Pull Off That Can Be Used For Parking. Measures 500' X 50'.				
	153	US 12			FLAGGER STATION				
14	153.8	US 12	0.9	5	Pull Off On North Side Of Id 12 Just After Bridge Crossing. Measures 250' X 45' And Can Be Utilized For Traffic Relief.	Flagger And Signage	Hold Traffic In Wide Spot As Load Crosses Bridge		
	158.5	US 12			FLAGGER STATION				
15	158.5	US 12	4.7	15	Road Is Three Lanes Up To MM 159.	Pilot Cars And Signage	Hold Transport Direct Traffic Around		
	160	US 12			FLAGGER STATION				
16	160	US 12	1.5	8	Large Pull Off On South Side Of Id 12 That Can Be Utilized For Traffic Relief. Measures 300' X 50'. Use Only If Needed	Flagger And Signage	Hold Transport Direct Traffic Around		
	163.5	US 12			FLAGGER STATION				
17	163.5	US 12	3.5	12	Large Rock And Paved Area For Traffic Control	Flagger And Signage	Hold Traffic Allow Transporter To Pass		
18	165	US 12	1.5	10	Pull Off On South Side Of Id 12 That Can Be Utilized For Traffic Relief. Measures 225' X 35'.	Flagger And Signage	Hold Or Slow Transport Direct Traffic Around		

Emmert International Primary Pull Offs - Coke Drums

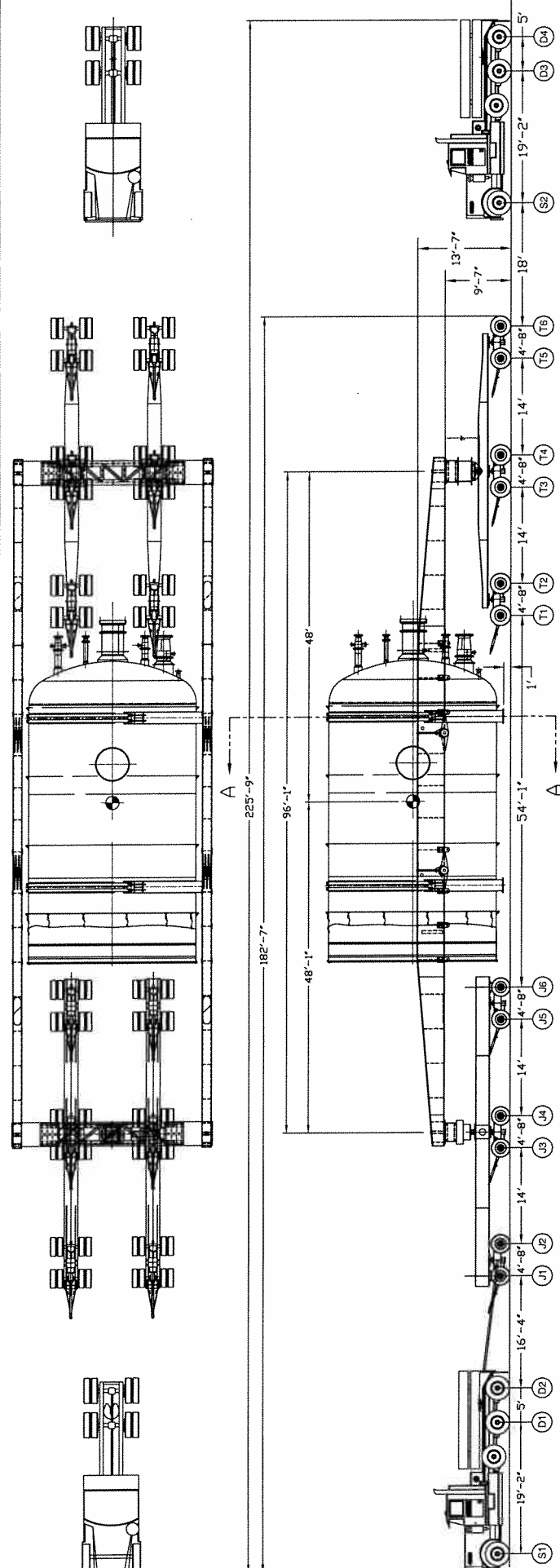
19	165.7	US 12	0.7	10	Pull Off That Can Be Utilized For Traffic Relief. Measures 400' X 75'. FLAGGER STATION	Flaggers And Signage	Hold Or Slow Transport Direct Traffic Around
20	165.8	US 12	1.8	10	Pull Off That Can Be Utilized For Traffic Relief. Measures 200' X 40'. FLAGGER STATION	Flaggers And Signage	Hold Or Slow Transport Direct Traffic Around
21	167.5	US 12	1.1	10	Pull Off That Can Be Utilized For Traffic Relief. Measures 200' X 40'. FLAGGER STATION	Flaggers And Signage	Hold Or Slow Transport Direct Traffic Around
22	167.6	US 12	0.4	10	Large Chain Up Area That Measures 450' X 70'. Could Be A Parking Area. Emergency Call Box Location For Dispatch To ISP. ISP Will Be Accompanying Load The Entire Way. FLAGGER STATION	Flaggers And Signage	Hold Or Slow Transport Direct Traffic Around
23	168.6	US 12	0.9	10	Start 3 Lanes To MM 170.5 FLAGGER STATION	Flaggers And Signage	Hold Transport Right Allow Traffic To Follow Pilot Car
24	169	US 12	1.2	15	Pull Off On North Side Of ID 12. Measures 350' X 56'. FLAGGER STATION	Flaggers And Signage	Hold Or Slow Transport Direct Traffic Around
25	171.1	US 12	0.4	10	Start 3 Lanes To MM 172.0	Flaggers And Signage	Hold Transport Right Allow Traffic To Follow Pilot Car
26	171.5	US 12	0.5	15	Pull Off That Measures 350' X 40'. FLAGGER STATION	Flaggers And Signage	Hold Or Slow Transport Direct Traffic Around
27	172	US 12	2.2	15	Rest Area Across From Visitors Center At Lolo Pass. FLAGGER STATION	Flaggers And Signage	Hold Or Slow Transport Direct Traffic Around
	172.1	US 12					
	174.2	US 12	47.3	257	PARK FOR NIGHT - JUST OVER ID/MT BORDER		
	174.39	PARK					

LINE ITEMS IN GREEN SIGNIFY FLAGGER STATION
 LINE ITEMS IN ORANGE HIGHLIGHT SIGNIFY PROPOSED PARKING AREAS EACH NIGHT

Note: Emmert has proposed to add a third truck to the load at IDT's request in order to increase average speed of the load up the Lolo Pass grade, just past the Crooked Fork Road.

	Miles	Time
ID-Day 1	39.9	122
ID-Day 2	34.9	122
ID-Day 3	53.1	140
ID-Day 4	47.3	257
Total Idaho Travel	175.2	516

A



This configuration may cross every bridge on US 12 between MP 2.45 and MP 174.42 with special requirements (see above) with the exception of the following bridges.

Arrow Bridge at MP 14.960
Maggie Creek at MP 78.820
Fish Creek at MP 120.098

Helper dollies (as shown in drawing no. G091302-01-17) must be added for the load to cross the above listed bridges.

Axle	Tare Weight	Net Weight	Gross lbs	Wheels per line	Load-lbs per Wheel	Tire Width	Lat inch Loading
Pull Truck							
S1	16000	0	16000	2	8000	14	571 lbs/in
D1	20000	0	20000	4	5000	11	455 lbs/in
D2	20000	0	20000	4	5000	11	455 lbs/in
6-Dolly Transporter							
J1	15800	29304	45104	8	5638	11	513 lbs/in
J2	15800	29304	45104	8	5638	11	513 lbs/in
J3	15800	29304	45104	8	5638	11	513 lbs/in
J4	15800	29304	45104	8	5638	11	513 lbs/in
J5	15800	29304	45104	8	5638	11	513 lbs/in
J6	15800	29304	45104	8	5638	11	513 lbs/in
6-Dolly Transporter							
T1	14800	29130	43930	8	5491	11	489 lbs/in
T2	14800	29130	43930	8	5491	11	489 lbs/in
T3	14800	29130	43930	8	5491	11	489 lbs/in
T4	14800	29130	43930	8	5491	11	489 lbs/in
T5	14800	29130	43930	8	5491	11	489 lbs/in
T6	14800	29130	43930	8	5491	11	489 lbs/in
Total	239,600	350,604	590,204	106			
Push Truck							
S2	16000	0	16000	2	8000	14	571 lbs/in
D3	20000	0	20000	4	5000	11	455 lbs/in
D4	20000	0	20000	4	5000	11	455 lbs/in
Total	295,600	350,604	646,204	116			

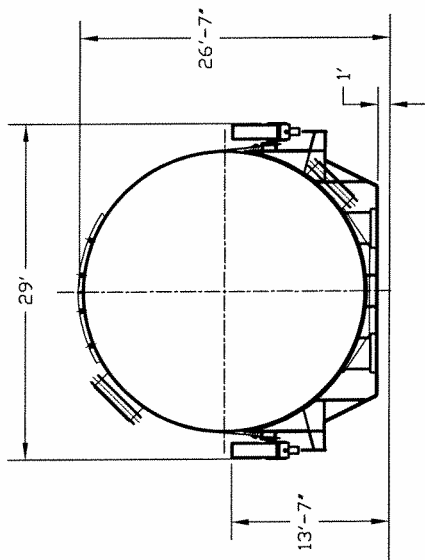
REV.	DATE	DESCRIPTION	NAME
4	2/22/10	CORRECT DOLLY CALLOUT WAS A NOW 6	PC
3	2/17/10	CHANGE DRAWING NUMBER	PC
2	1/21/10	SADDLE MODIFICATIONS	PC
1	10/22/09	CHG WEIGHT CHART ADD BAR	PC

INTERNATIONAL
 1031 S.E. Highway 112
 P.O. Box 800
 Phone (803) 662-9391
 Fax (803) 662-9392
 Raleigh, NC 27604

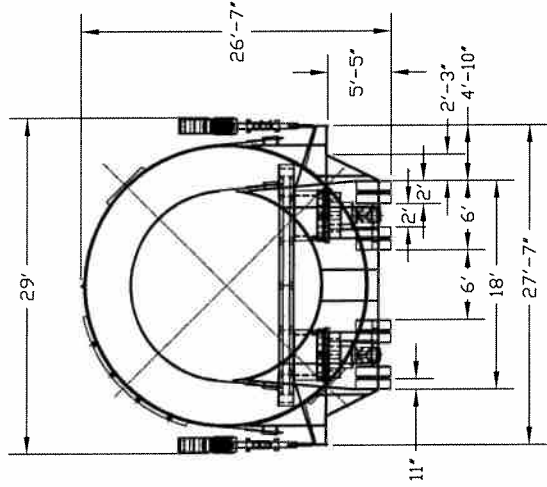
TRANSPORTATION VIEW
 12 DOLLY SUSPENSION BEAM SYSTEM
 UPPER COKE DRUM #1 SECTION

BY: JOHN P. WELCH
 DATE: 02-21-2009
 SCALE: NONE
 SHEET: 1
 DRAWING NO.: G091302
 PROJECT:

A



SECTION A-A



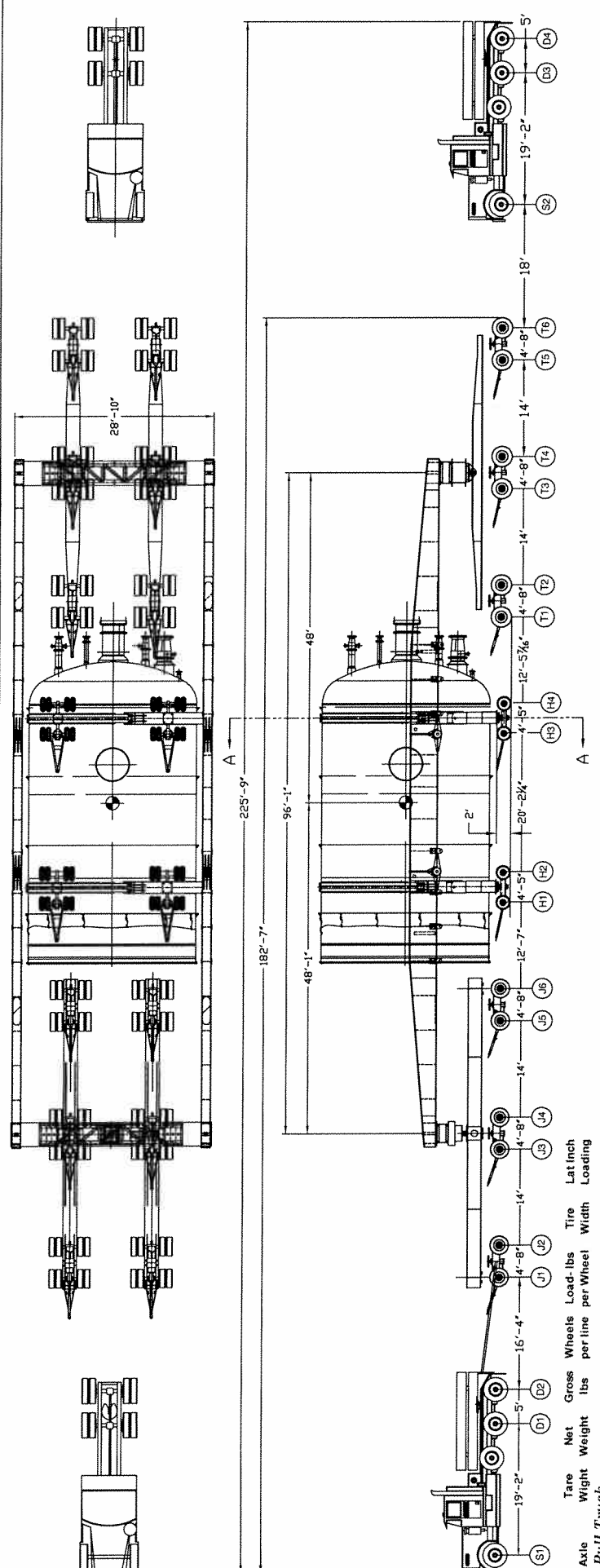
END ELEVATION

A

REV.	DATE	DESCRIPTION	NAME	PC
3	2/7/10	CHANGE DRAWING NUMBER		PC
2	1/27/10	SADDLE MODIFICATION		PC
1	10/22/08	CHG WEIGHT CHART		PC

BY: JOHN P. WELCH	SCALE: 3/8"=1'-0"	SHEET NO. 1	DATE: 02-01-2009	PROJECT NO. G-091302
DATE: 02-01-2009	SCALE: 1:122	SHEET 2	DATE: 02-01-2009	PROJECT NO. G-091302
G091302-01-12				

5000 North 45th St. Dallas, TX 75244 Phone: (972) 501-1122 Fax: (972) 501-1122	P.O. Box 878 Dallas, TX 75208 Phone: (972) 501-1122 Fax: (972) 501-1122
TRANSPORTATION VIEW 12 DOLLY SUSPENSION BEAM SYSTEM UPPER COKE DRUM #1 SECTION	



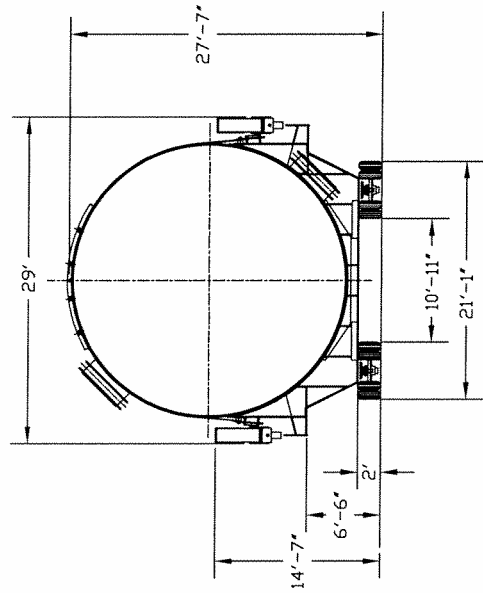
Helper dollies must be added as shown above for the load to cross the bridges listed below.
 Arrow Bridge at MP 14.960
 Maggie Creek at MP 78.820
 Fish Creek at MP 120.098

Axle	Tare Weight	Net Weight	Gross lbs	Wheels per line	Load lbs per wheel	Tire Width	Tire	Lat Inch	Load
Push Truck									
S1	16000	0	16000	2	8000	14		571	lbs/in
D1	20000	0	20000	4	5000	11		455	lbs/in
D2	20000	0	20000	4	5000	11		455	lbs/in
6-Dolly Transporter									
J1	15800	19587	35387	8	4423	11		402	lbs/in
J2	15800	19587	35387	8	4423	11		402	lbs/in
J3	15800	19587	35387	8	4423	11		402	lbs/in
J4	15800	19587	35387	8	4423	11		402	lbs/in
J5	15800	19587	35387	8	4423	11		402	lbs/in
J6	15800	19587	35387	8	4423	11		402	lbs/in
Helper Dollies									
H1	2850	29150	32000	8	4000	9		444	lbs/in
H2	2850	29150	32000	8	4000	9		444	lbs/in
H3	2850	29150	32000	8	4000	9		444	lbs/in
H4	2850	29150	32000	8	4000	9		444	lbs/in
6-Dolly Transporter									
T1	14800	19413	34213	8	4277	11		389	lbs/in
T2	14800	19413	34213	8	4277	11		389	lbs/in
T3	14800	19413	34213	8	4277	11		389	lbs/in
T4	14800	19413	34213	8	4277	11		389	lbs/in
T5	14800	19413	34213	8	4277	11		389	lbs/in
T6	14800	19413	34213	8	4277	11		389	lbs/in
Total	251,000	350,604	601604	138					
Push Truck									
S2	16000	0	16000	2	8000	14		571	lbs/in
D3	20000	0	20000	4	5000	11		455	lbs/in
D4	20000	0	20000	4	5000	11		455	lbs/in
Total	387,000	350,604	657604	148					

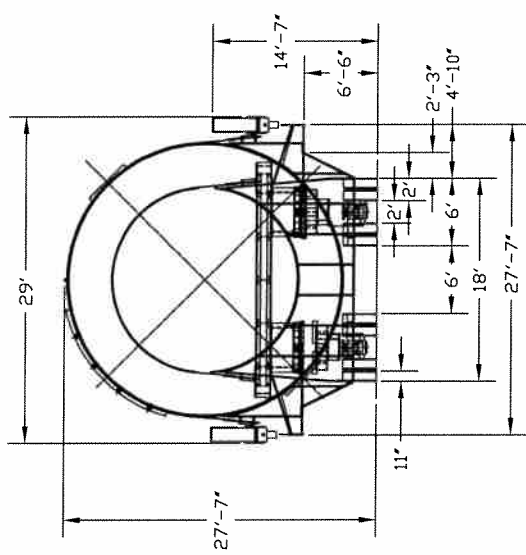
REV	DATE	DESCRIPTION	RAC
1	3/21/2010	ADDED LOW PROFILE HELPER DOLLIES	
NAME		DESCRIPTION	
P. O. CALLAGHAN		SYSTEM W/ HELPER DOLLIES FOR DRUM #1	
DATE: 2.19.10		SHEET: 1	
DRAWN NUMBER		PROJECT NO. G-091302	
BY: P. CALLAGHAN		SCALE: NONE	
CHKD: 2.19.10		REVISIONS:	
APP'D: 2.19.10		DATE: 2.19.10	
PROJECT: 091302		SHEET: 1	
PROJECT: 091302		SHEET: 1	

1811 S.E. Highway 212
 P. O. Box 278
 Phoenix, AZ 85021-0278
 Phone: (602) 955-7191
 Fax: (602) 955-7192
 1-800-762-1000

TRANSPORTATION VIEW 12 DOLLY SUSPENSION BEAM
 AT MAGGIE CREEK MM 78.82 & FISH CREEK MM 120



SECTION A-A



END ELEVATION

SHOWN IN RAISED POSITION
TO ACCOMMODATE HELPER DOLLIES

REV	DATE	DESCRIPTION	BY	CHKD	DATE
1	3/01/2010	ADDED LOW PROFILE HELPER DOLLIES			

REV	DATE	DESCRIPTION	BY	CHKD	DATE

THE DRAWING IS THE PROPERTY OF EMBERT INTERNATIONAL. IT IS TO BE USED ONLY FOR THE PROJECT AND SITE SPECIFICALLY IDENTIFIED HEREON. ANY REUSE OR MODIFICATION OF THIS DRAWING WITHOUT THE WRITTEN PERMISSION OF EMBERT INTERNATIONAL IS PROHIBITED. THIS DRAWING AND ANY CONTENTS THEREOF ARE UNCLASSIFIED AND ARE NOT SUBJECT TO ABOVE CONTROLS AND ARE NOT AN AUTHORIZED COMPANY WORK.

EMBERT INTERNATIONAL
 1502 Highway 20 East
 ConocoPhillips Building
 P.O. Box 878
 Billings, Montana 59103
 Phone (406) 682-7191
 Fax (406) 682-7192
 1-800-795-8525
 Fax (406) 682-5883

TRANSPORTATION VIEW 12 DOLLY SUSPENSION BEAM
 SYSTEM W/ HELPER DOLLIES FOR UPPER COKE DRUM #1
 AT MAGGIE CREEK MM 76.82 & FISH CREEK MM 120

BY:	P. CALLAGHAN	DATE:	2.18.10
CHKD:	BILLINGS, MT	PERMIT NO.:	G-091302
SCALE:	NONE	SHEET:	2
PROJECT:		REVISION:	1

A

A

EMMERT

INTERNATIONAL

ENGINEERED TRANSPORT - RIGGING - STRUCTURE RELOCATION
HIGHWAY MARINE RAIL

WHEREAS EMMERT INDUSTRIAL CORP., dba EMMERT INTERNATIONAL ("Emmert") and the IDAHO TRANSPORTATION DEPARTMENT ("ITD")(collectively "Parties")wish to amend and restate Emmert's Indemnification Obligation to ITD; and,

WHEREAS Emmert acknowledges and agrees that under the laws of the State of Idaho, the courts of the State of Idaho will have personal and subject matter jurisdiction over actions against Emmert arising out of any wrongful acts or failures to act committed by Emmert in Idaho while Emmert transports cargo for ConocoPhillips; and,

WHEREAS Emmert has obtained insurance coverage specifically to cover liability that may arise and has made ITD an additional insured with waiver of subrogation under said policy and which policy includes coverage for damage to public and private property; and,

WHEREAS . Emmert acknowledges that the insurance policy reflected in the Certificate of Liability Insurance attached hereto as Exhibit A is intended to also protect private individuals and public and private entities from bodily injury and property damage arising out of an "occurrence" during Emmert's utilization of roadways and infrastructures in Idaho for the purpose of transporting cargo for ConocoPhillips for the coke drum transportation project.

THE PARTIES HEREBY AGREE:

Emmert Industrial Corp. ("Emmert"), dba Emmert International, shall indemnify, defend and hold harmless the Idaho Transportation Department ("ITD")and the general public, to the limits of the policy reflected in the Certificate of Liability Insurance attached hereto as Exhibit A, from and against any and all claims for damage, during and arising out of Emmert's utilization of roadways and infrastructures in Idaho for the purpose of transporting cargo for ConocoPhillips for the coke drum transportation project. Emmert agrees to assume and bear the full risk of loss, up to the available limits of the policy attached as Exhibit A, for any injury and/or damage to public or private property, during and arising from an "occurrence" while crossing over the state's roadways and infrastructure during the coke drum transportation project

This agreement shall replace and supersede that certain Hold Harmless Agreement signed by Terry Michael Emmert on or about August 16, 2010

Emmert International
Terry M. Emmert


by its Vice President

11-8-10

Date

A

ACORD CERTIFICATE OF LIABILITY INSURANCE DATE (MM/DD/YYYY)
9/21/2010

PRODUCER (541) 687-1117 FAX: (541) 342-8280
Ward Insurance Agency
P O Box 10167

THIS CERTIFICATE IS ISSUED AS A MATTER OF INFORMATION ONLY AND CONFERS NO RIGHTS UPON THE CERTIFICATE HOLDER. THIS CERTIFICATE DOES NOT AMEND, EXTEND OR ALTER THE COVERAGE AFFORDED BY THE POLICIES BELOW.

Eugene OR 97440
INSURED
Emmert Industrial Corp.
11811 SE Highway 212
Clackamas OR 97015

INSURERS AFFORDING COVERAGE	NAIC #
INSURER A: Scottsdale Insurance Co.	
INSURER B: American States Insurance	19704
INSURER C: Westchester Fire Ins. Co.	
INSURER D:	
INSURER E:	

COVERAGES

THE POLICIES OF INSURANCE LISTED BELOW HAVE BEEN ISSUED TO THE INSURED NAMED ABOVE FOR THE POLICY PERIOD INDICATED. NOTWITHSTANDING ANY REQUIREMENT, TERM OR CONDITION OF ANY CONTRACT OR OTHER DOCUMENT WITH RESPECT TO WHICH THIS CERTIFICATE MAY BE ISSUED OR MAY PERTAIN. THE INSURANCE AFFORDED BY THE POLICIES DESCRIBED HEREIN IS SUBJECT TO ALL THE TERMS, EXCLUSIONS AND CONDITIONS OF SUCH POLICIES. AGGREGATE LIMITS SHOWN MAY HAVE BEEN REDUCED BY PAID CLAIMS.

INSR (ADD'L LTR INSRD)	TYPE OF INSURANCE	POLICY NUMBER	POLICY EFFECTIVE DATE (MM/DD/YY)	POLICY EXPIRATION DATE (MM/DD/YY)	LIMITS
A	GENERAL LIABILITY	BCS0022710	9/21/2010	9/21/2011	EACH OCCURRENCE \$ 1,000,000
	<input checked="" type="checkbox"/> COMMERCIAL GENERAL LIABILITY				DAMAGE TO RENTED PREMISES (Ea occurrence) \$ 50,000
	<input type="checkbox"/> CLAIMS MADE <input checked="" type="checkbox"/> OCCUR				MED EXP (Any one person) \$ Excluded
	<input checked="" type="checkbox"/> HOOK LIABILITY <input checked="" type="checkbox"/> OVER THE ROAD				PERSONAL & ADV INJURY \$ 1,000,000
GEN'L AGGREGATE LIMIT APPLIES PER					GENERAL AGGREGATE \$ 2,000,000
<input type="checkbox"/> POLICY <input checked="" type="checkbox"/> PROJECT <input type="checkbox"/> LOC					PRODUCTS - COMP/OP AGG \$ 1,000,000
B	AUTOMOBILE LIABILITY	01CI28837220	9/21/2010	9/21/2011	COMBINED SINGLE LIMIT (Ea accident) \$ 1,000,000
	<input checked="" type="checkbox"/> ANY AUTO				BODILY INJURY (Per person) \$
	<input type="checkbox"/> ALL OWNED AUTOS <input type="checkbox"/> SCHEDULED AUTOS				BODILY INJURY (Per accident) \$
	<input checked="" type="checkbox"/> HIRED AUTOS <input checked="" type="checkbox"/> NON-OWNED AUTOS				PROPERTY DAMAGE (Per accident) \$
GARAGE LIABILITY					AUTO ONLY - EA ACCIDENT \$
<input type="checkbox"/> ANY AUTO					OTHER THAN EA ACC \$
					AUTO ONLY AGG \$
C	ALLIANCE LIABILITY	G2416272201	9/21/2010	9/21/2011	EACH OCCURRENCE \$ 10,000,000
	<input checked="" type="checkbox"/> OCCUR <input type="checkbox"/> CLAIMS MADE				AGGREGATE \$ 10,000,000
	<input type="checkbox"/> DEDUCTIBLE <input checked="" type="checkbox"/> RETENTION \$ 10,000				
WORKERS COMPENSATION AND EMPLOYERS' LIABILITY					LWC STATU- TORY LIMITS <input type="checkbox"/> OTH- ER <input type="checkbox"/>
ANY PROPRIETOR/PARTNER/EXECUTIVE OFFICER/MEMBER EXCLUDED?					E.L. EACH ACCIDENT \$
If yes, describe under SPECIAL PROVISIONS below					E.L. DISEASE - EA EMPLOYEE \$
OTHER					E.L. DISEASE - POLICY LIMIT \$

DESCRIPTION OF OPERATIONS/LOCATIONS/VEHICLES/EXCLUSIONS ADDED BY ENDORSEMENT/SPECIAL PROVISIONS
IDAHO DEPARTMENT OF TRANSPORTATION IS AN ADDITIONAL INSURED WITH WAIVER OF SUBROGATION. PROTECTION OF IDAHO DEPARTMENT OF TRANSPORTATION ROADWAYS AND INFRASTRUCTURES (ALL OPERATIONS) FOR ANY DAMAGES INCURRED DURING TRANSPORTATION OF CONOCOPHILLIPS COKE DRUMS. (AS ISSUED BY IDOT PERMIT APPROVAL).

CERTIFICATE HOLDER
(208) 334-8000
IDAHO TRANSPORTATION DEPARTMENT
3311 W. STATE STREET
P.O. BOX 7129
BOISE, ID 83707-1129

CANCELLATION
SHOULD ANY OF THE ABOVE DESCRIBED POLICIES BE CANCELLED BEFORE THE EXPIRATION DATE THEREOF, THE ISSUING INSURER WILL ENDEAVOR TO MAIL 30 DAYS WRITTEN NOTICE TO THE CERTIFICATE HOLDER NAMED TO THE LEFT, BUT FAILURE TO DO SO SHALL IMPOSE NO OBLIGATION OR LIABILITY OF ANY KIND UPON THE INSURER, ITS AGENTS OR REPRESENTATIVES.
AUTHORIZED REPRESENTATIVE
Paul Jensen/DANAK *Paul Jensen*

7ME
11-8-10