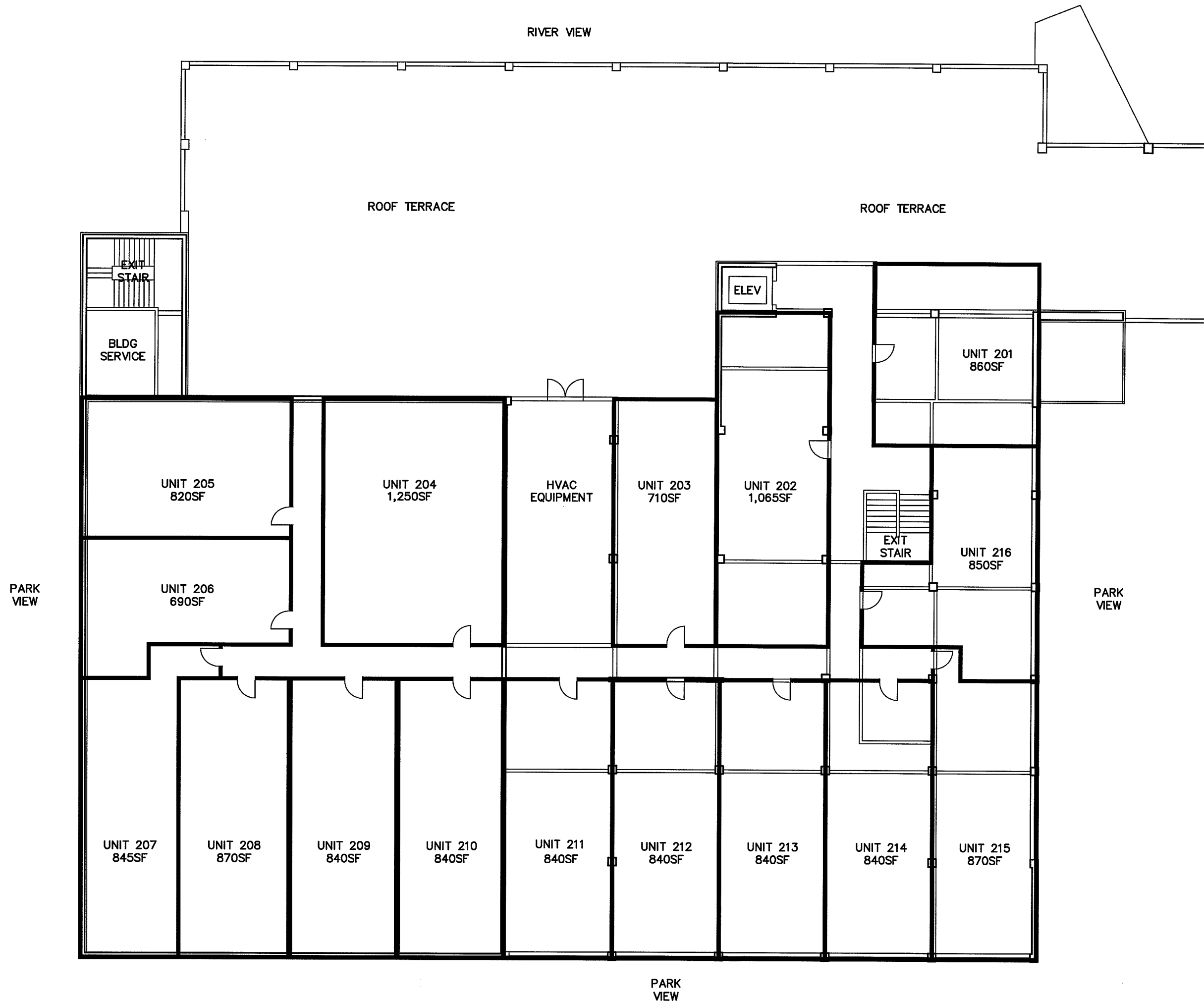

Wells and Company
 1325 West First Ave Suite 300 Spokane WA
 (509) 624-8050 624-0305 (fax) 99201
 Real Estate Investment Property Management
 Development Services Historic Renovation

DWG YMCabase
 DRAWN RWW
 SCALE 1/16"
 DATE 2-26-10

at HAVERMALE ISLAND
 SPOKANE WASHINGTON

YMCA BUILDING
 507 NORTH HOWARD STREET
MAIN LEVEL PLAN

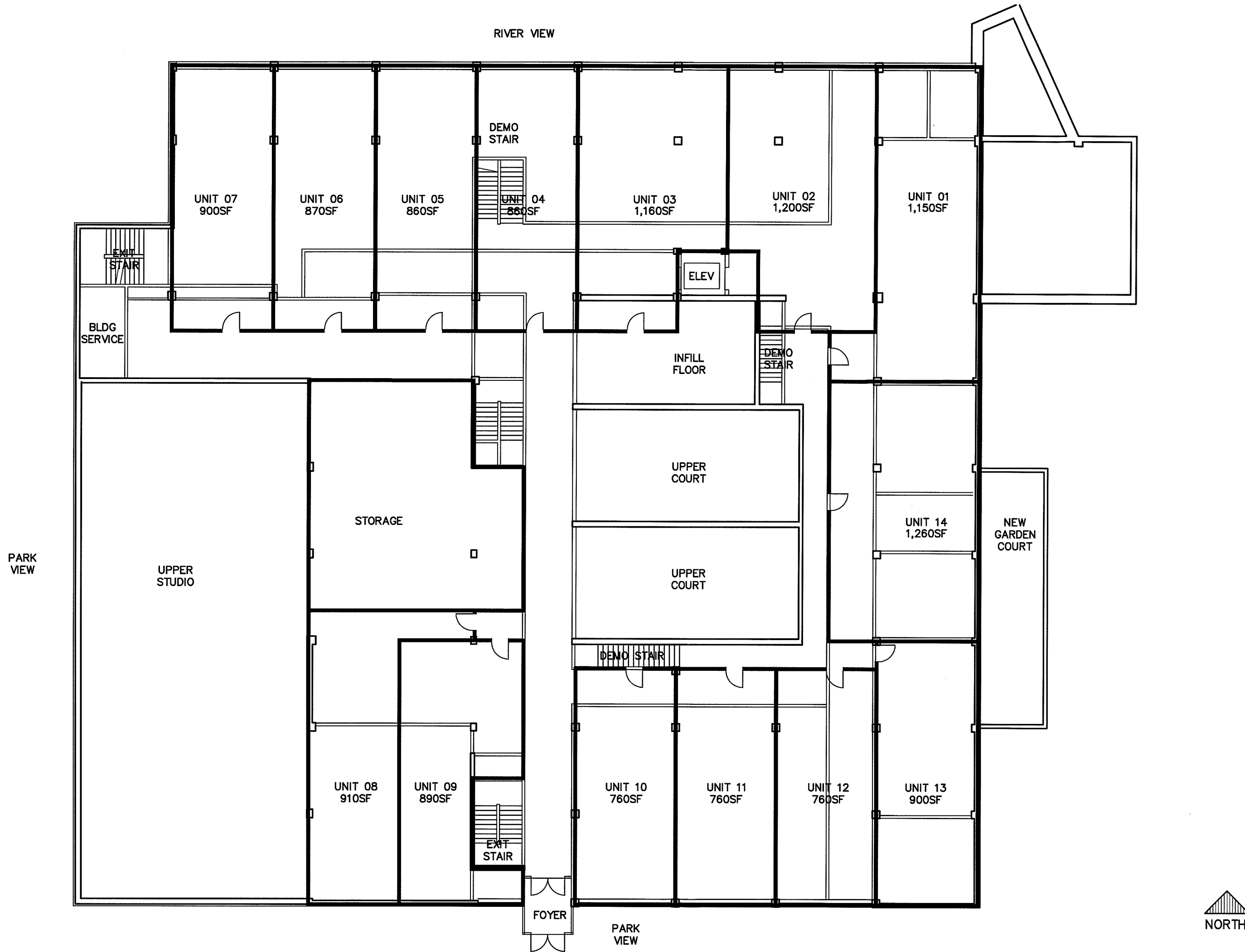


Mells and Company
 1325 West First Ave Suite 300 Spokane WA
 (509) 624-8050 624-0305 (fax) 99201
 Real Estate Investment Property Management
 Development Services Historic Renovation

DWG YMCbase
 DRAWN RWW
 SCALE 1/16"
 DATE 2-26-10

YMCA BUILDING
 507 NORTH HOWARD STREET
 at HAVERMALE ISLAND
 SPOKANE WASHINGTON

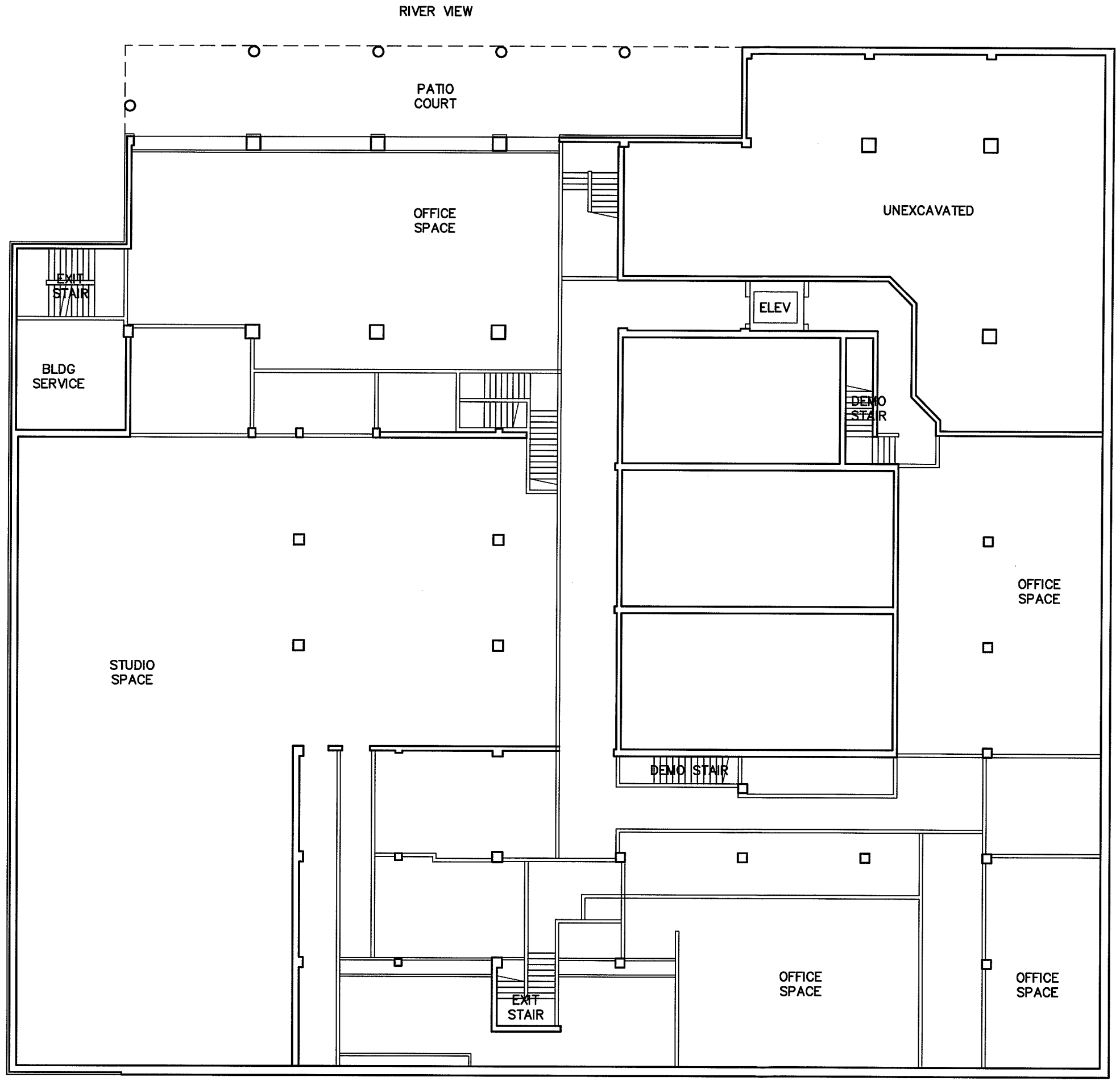
TERRACE LEVEL PLAN

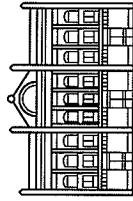


DWG	YMCabase
DRAWN	RWW
SCALE	1/16"
DATE	2-26-10

YMCA BUILDING
 507 NORTH HOWARD STREET
 at HAVERMALE ISLAND
 SPOKANE WASHINGTON

GROUND LEVEL PLAN




Wells and Company
 1325 West First Ave Suite 300 Spokane WA
 (509) 624-8050 624-0305 (fax) 99201
 Real Estate Investment Property Management
 Development Services Historic Renovation

DWG YMCabase
 DRAWN RWW
 SCALE 1/16"
 DATE 2-26-10

YMCA BUILDING
 507 NORTH HOWARD STREET
 at HAVERMALE ISLAND
 SPOKANE WASHINGTON

OFFICE LEVEL PLAN