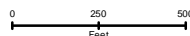

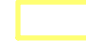

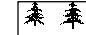
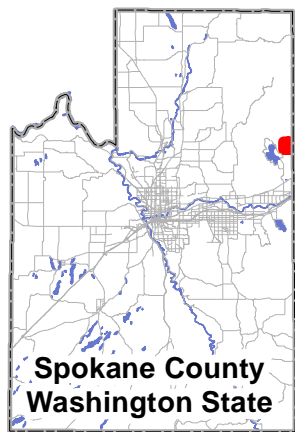


Koth Rd/DNR Managed Land Proposed No Shooting Area with Restricted Shooting



-  Proposed No Shooting with Restricted Shooting Area
-  Approx Parcel Boundary Line
-  WA State Dept of Natural Resources
-  Spokane County Park Land



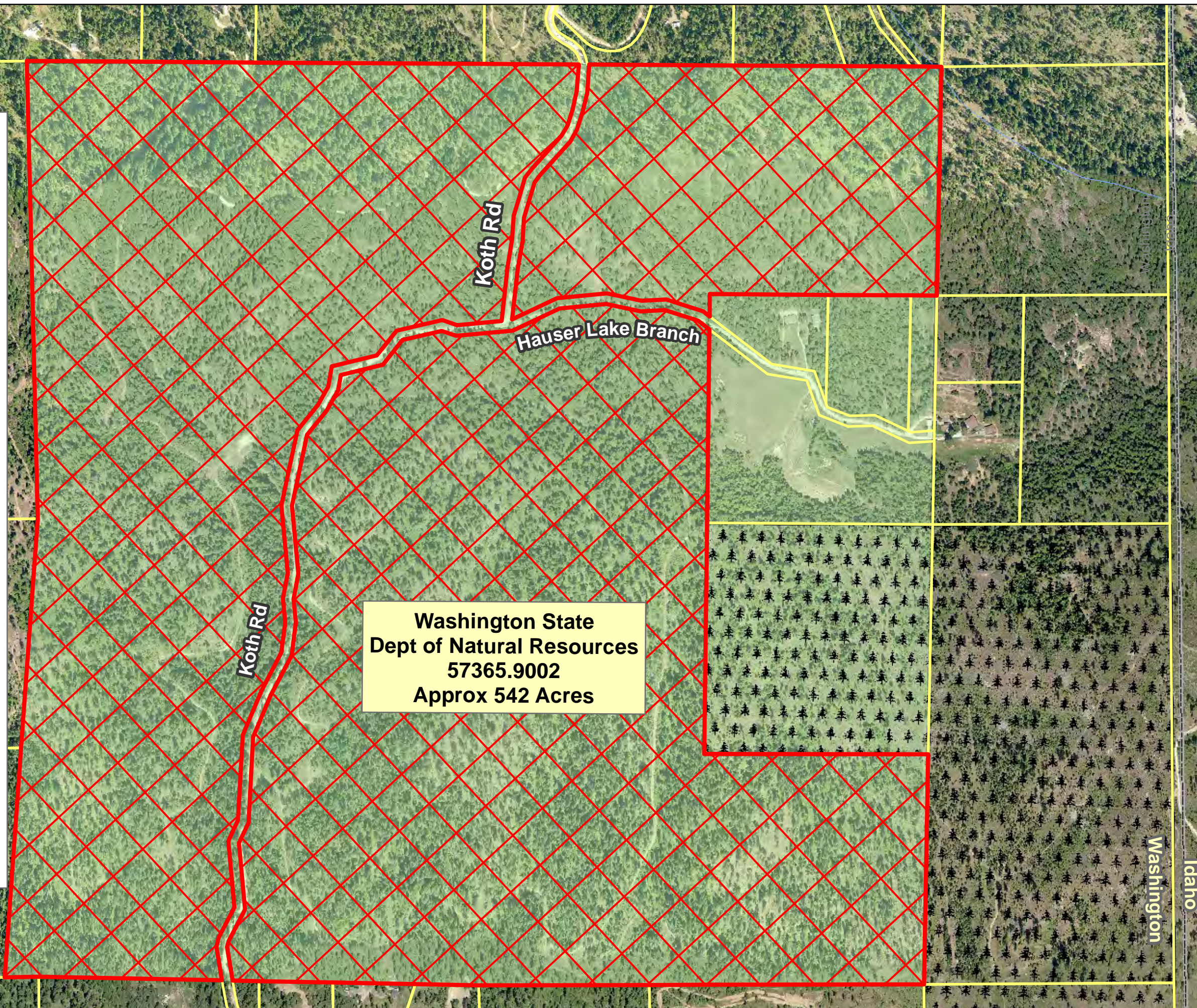
Spokane County
Washington State



Spokane County Public Works
Division of Engineering and Roads

This product is for informational purposes and as a general planning and management tool. Care was used during compilation of this data and final product to insure accuracy, but it may be based in whole or in part on the quality of the source data and outside sources of information. This product may not have been prepared for, or be suitable for, legal, engineering, or surveying purposes. Spokane County and the Division of Engineering and Roads do not accept responsibility for errors and omissions, and therefore, there are no warranties that accompany this material. Users of this information should consult the primary data and information sources to ascertain any usability of this information. This information may be periodically updated. Users of this information should check with the Spokane County Division of Engineering and Roads to ensure that they have the latest revision.

Map Created: April 2013



Washington
Idaho