

Making Spokane a Safer City

Spokane Police Department Strategic Plan



December 2012



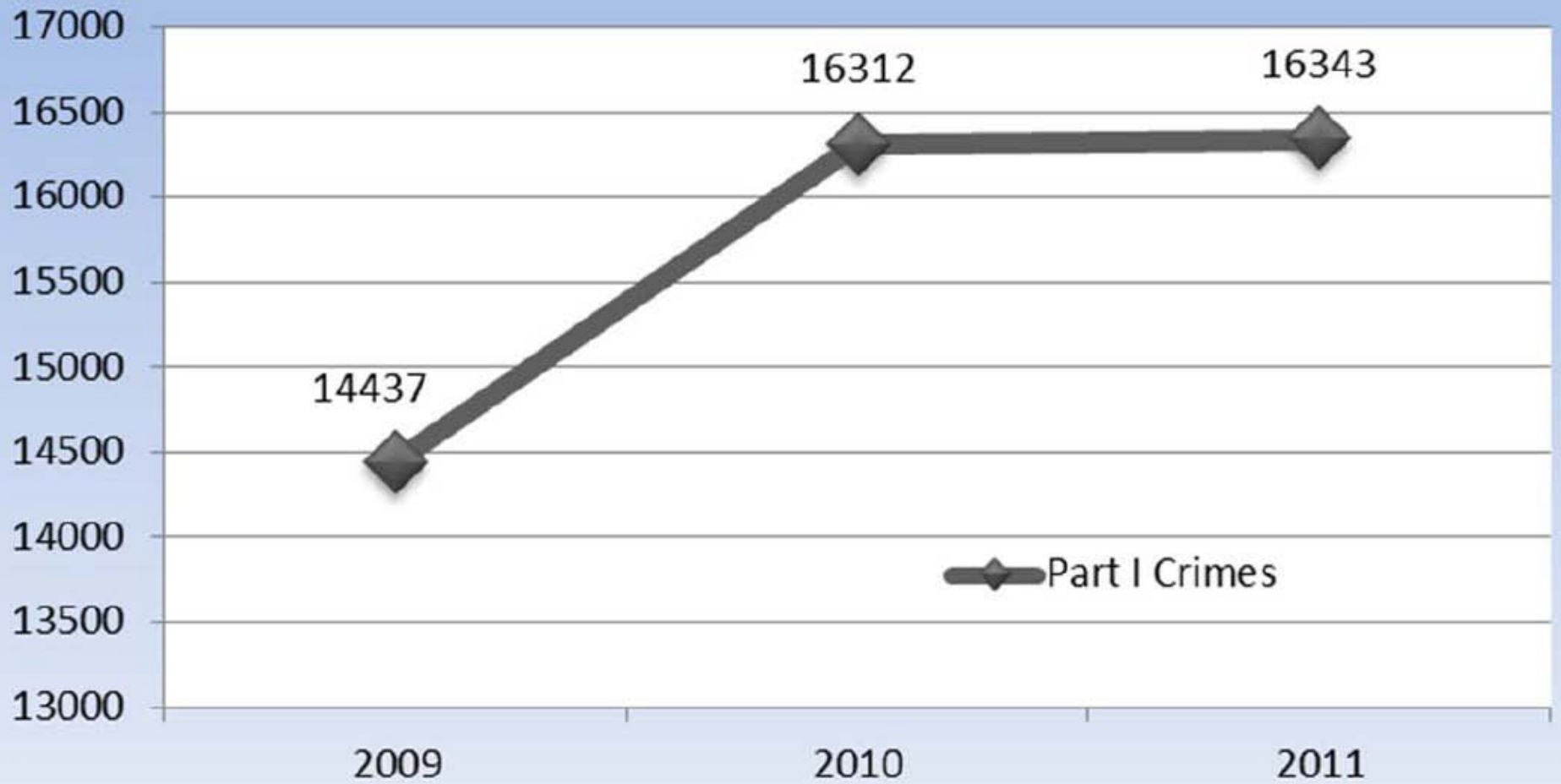
Mission & Values

- Policing model built on:

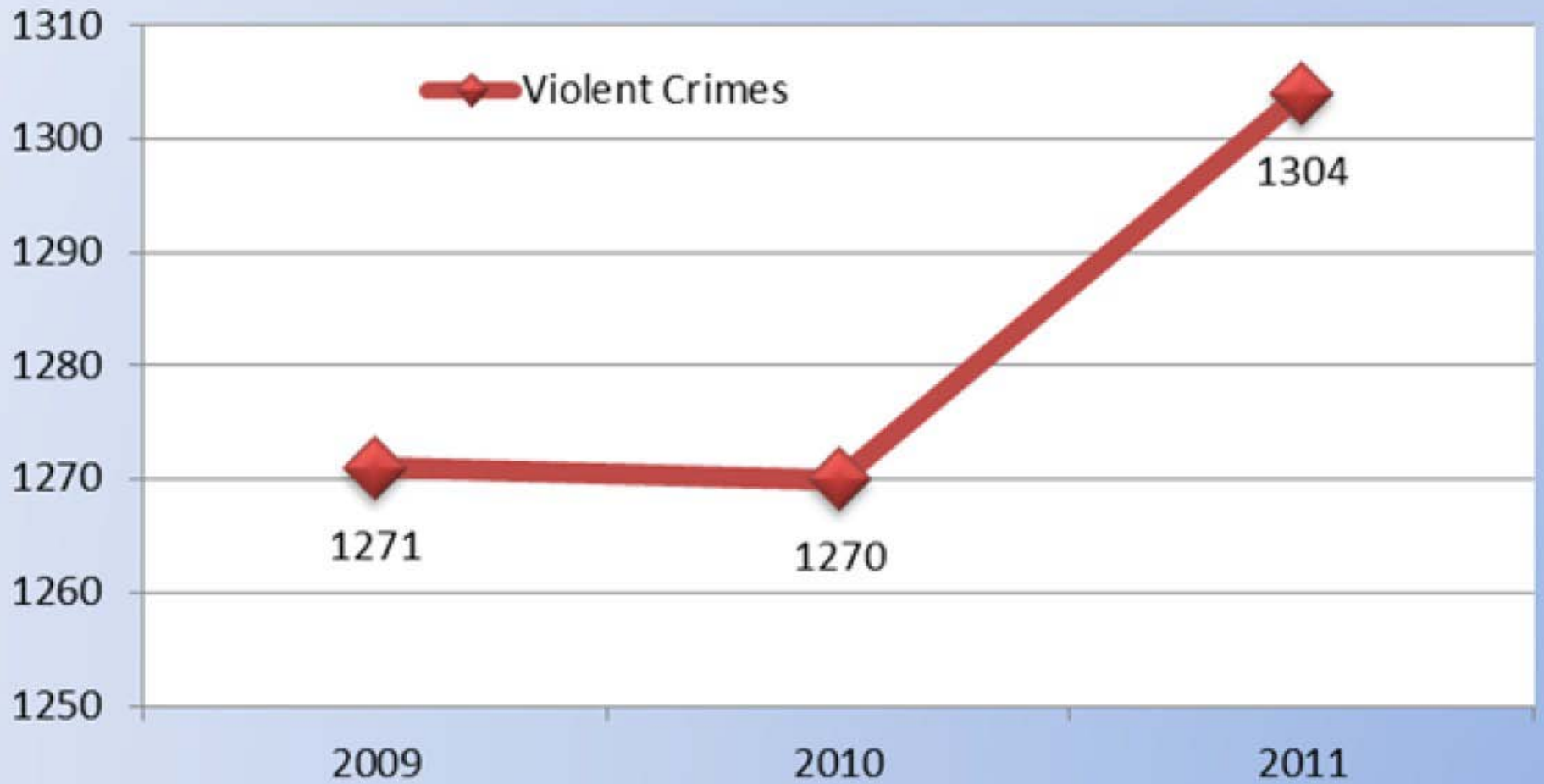
Integrity, Accountability & Transparency

- **Mission:** To demonstrate excellence in policing by working in partnership with the community we serve to:
 - Prevent and reduce crime, the fear of crime, and improve the quality of life for our residents and visitors;
 - Enforce laws while safeguarding the constitutional rights of all;
 - Provide high quality police services to all residents & visitors through integrity, compassion, & commitment to innovation;
 - Create a work environment in which we recruit, train, and develop an exceptional team of employees.

Part I Crimes



Violent Crimes



Property Crimes

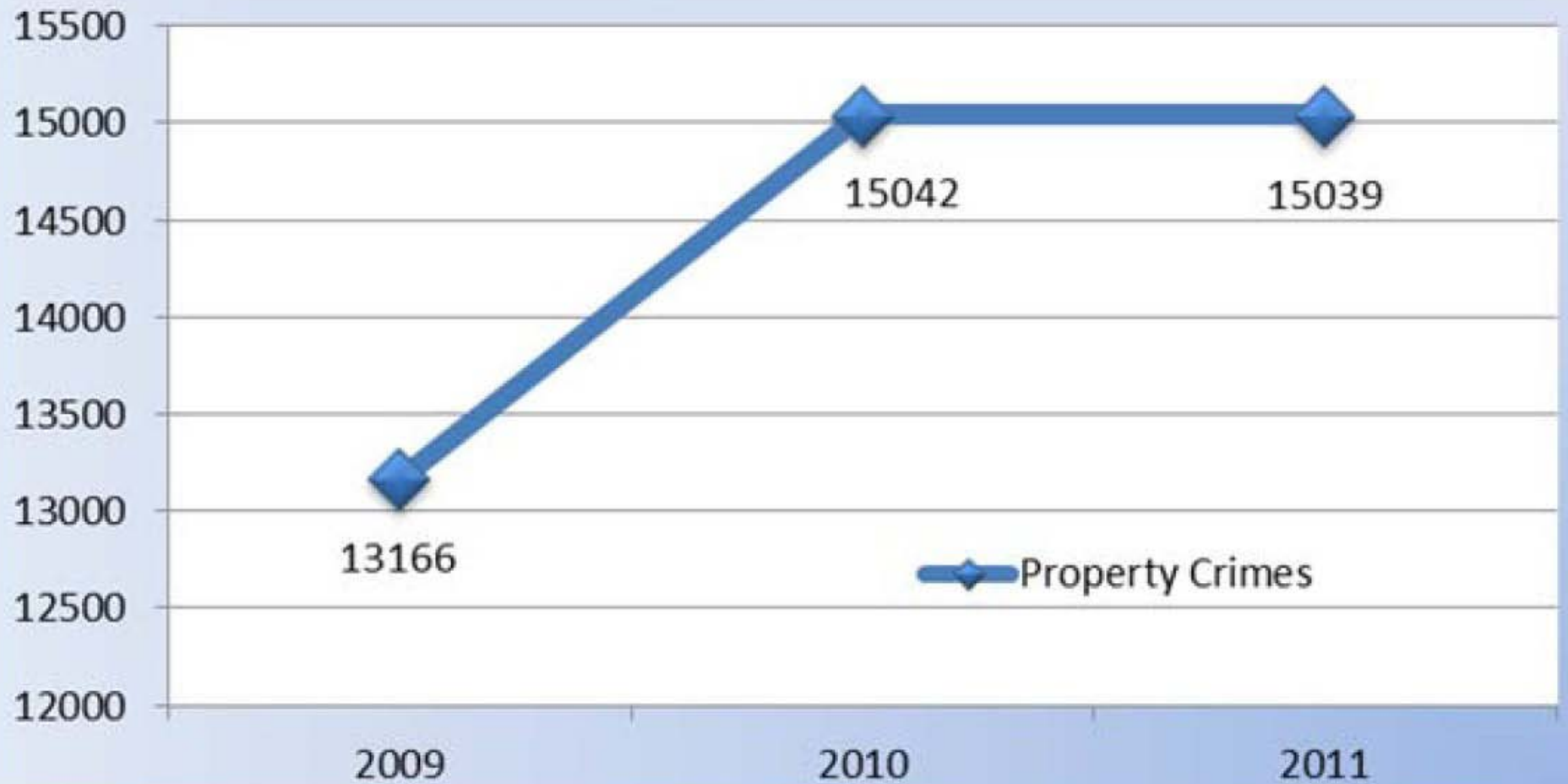
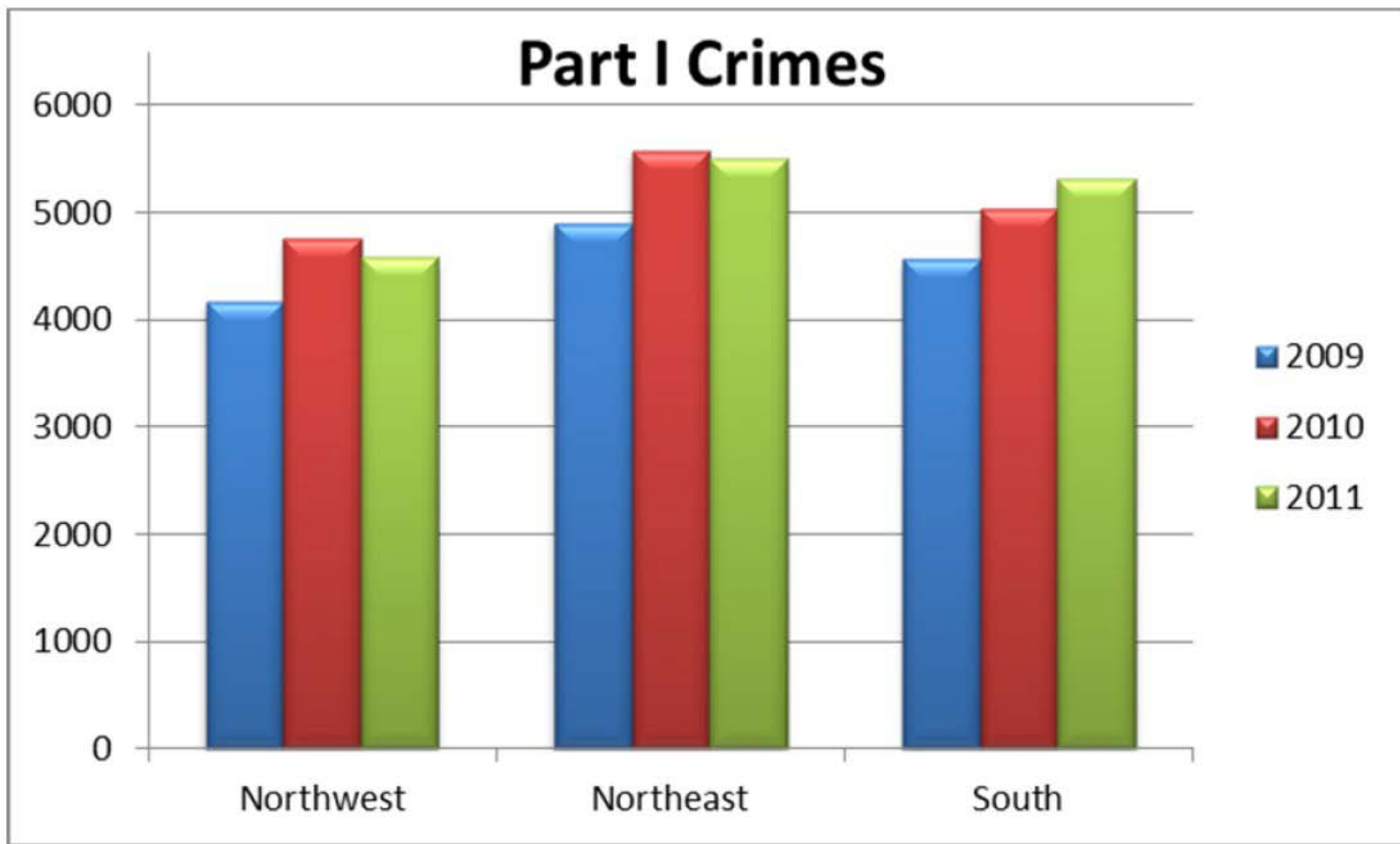


Table 1: Part I Crimes by Sector

	2009	2010	2011	% change from 2009 to 2011	% change from 2010 to 2011
Northwest	4159	4761	4578	10.2%	-3.8%
Northeast	4895	5574	5500	12.5%	-1.3%
South	4559	5032	5313	16.6%	5.6%
Part I Crimes	13613	15367	15391	13.1%	0.2%

Chart 4: Part I Crimes by Sector

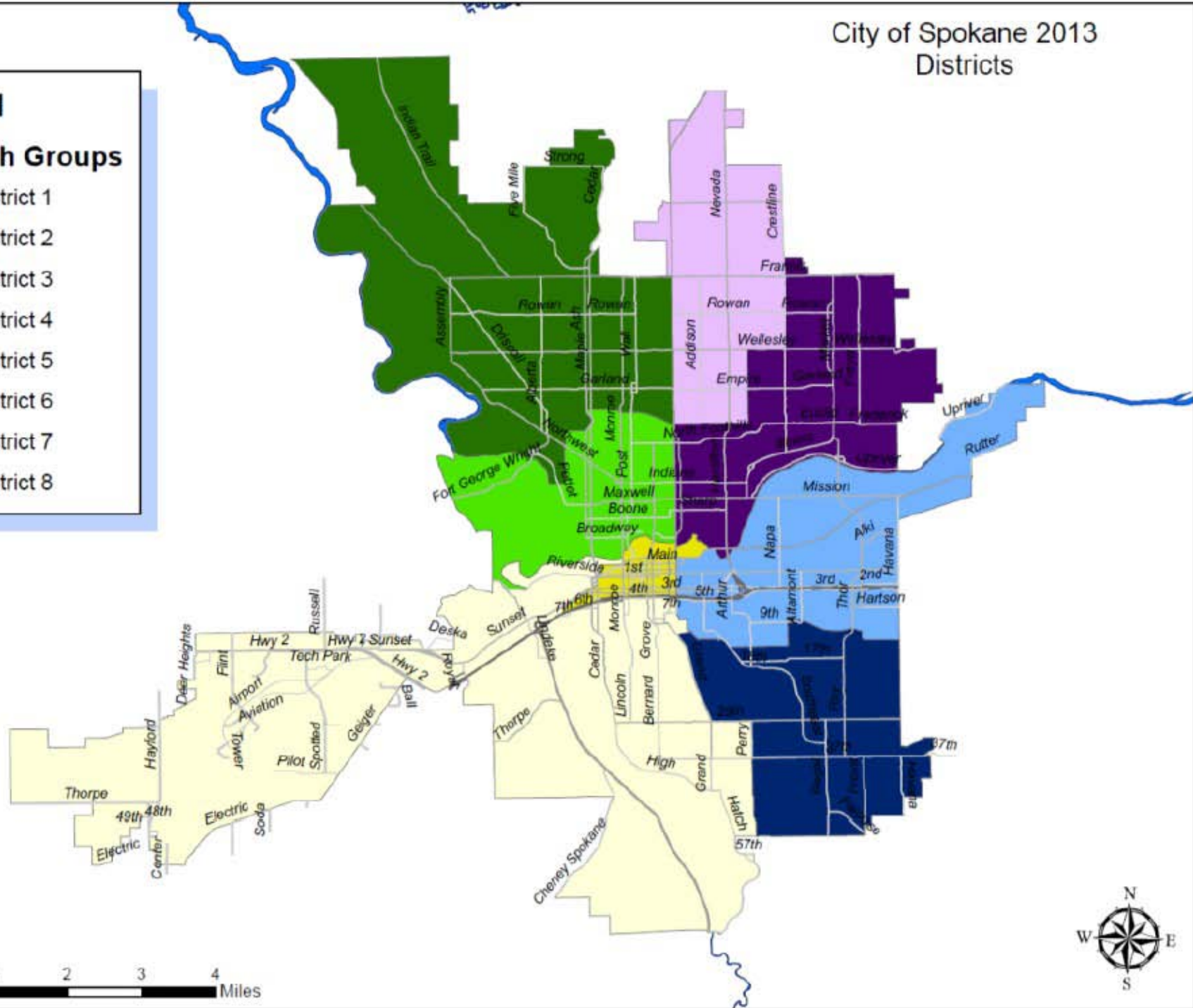


City of Spokane 2013 Districts

Legend

Dispatch Groups

- District 1
- District 2
- District 3
- District 4
- District 5
- District 6
- District 7
- District 8



SPOKANE POLICE DEPARTMENT - CITY WIDE



Preliminary Incident Counts

Part 1 Crime Categories		7 Day Comparison			28 Day Comparison			YTD Comparison		
		Current	Prior	Percent	Current	Prior	Percent	Current	Prior	Percent
Violent	Criminal Homicide									
	Rape									
	Robbery									
	Aggravated Assault									
	Violent Total:									
Property	Burglary Residence									
	Burglary Non Residence									
	Larceny									
	Vehicle Theft									
	Arson									
Property Total:										
Preliminary Part 1 Crime Totals:										
		Current 7 Day Period: 12/11/2012 - 12/17/2012			Prior 7 Day Period: 12/4/2012 - 12/10/2012					
		Current 28 Day Period: 11/20/2012 - 12/17/2012			Prior 28 Day Period: 10/23/2012 - 11/19/2012					
		Current YTD Period: 1/1/2012 - 12/17/2012			Prior YTD Period: 1/1/2011 - 12/17/2011					

Prepared by SPD Crime Analysis Office - Tuesday, December 18, 2012

With the exception of criminal homicides, this chart represents preliminary counts of the original Police Incident Reports. Full statistical analysis to determine the confidence level of this data has not been performed. In general, the preliminary incident counts are less than the crimes eventually reported on the UCR Crime Report. Further, the % change columns on the preliminary incident count differ from the percentage change on the UCR crime report, sometimes significantly.





NW - Northwest District (P1)

Preliminary Incident Counts

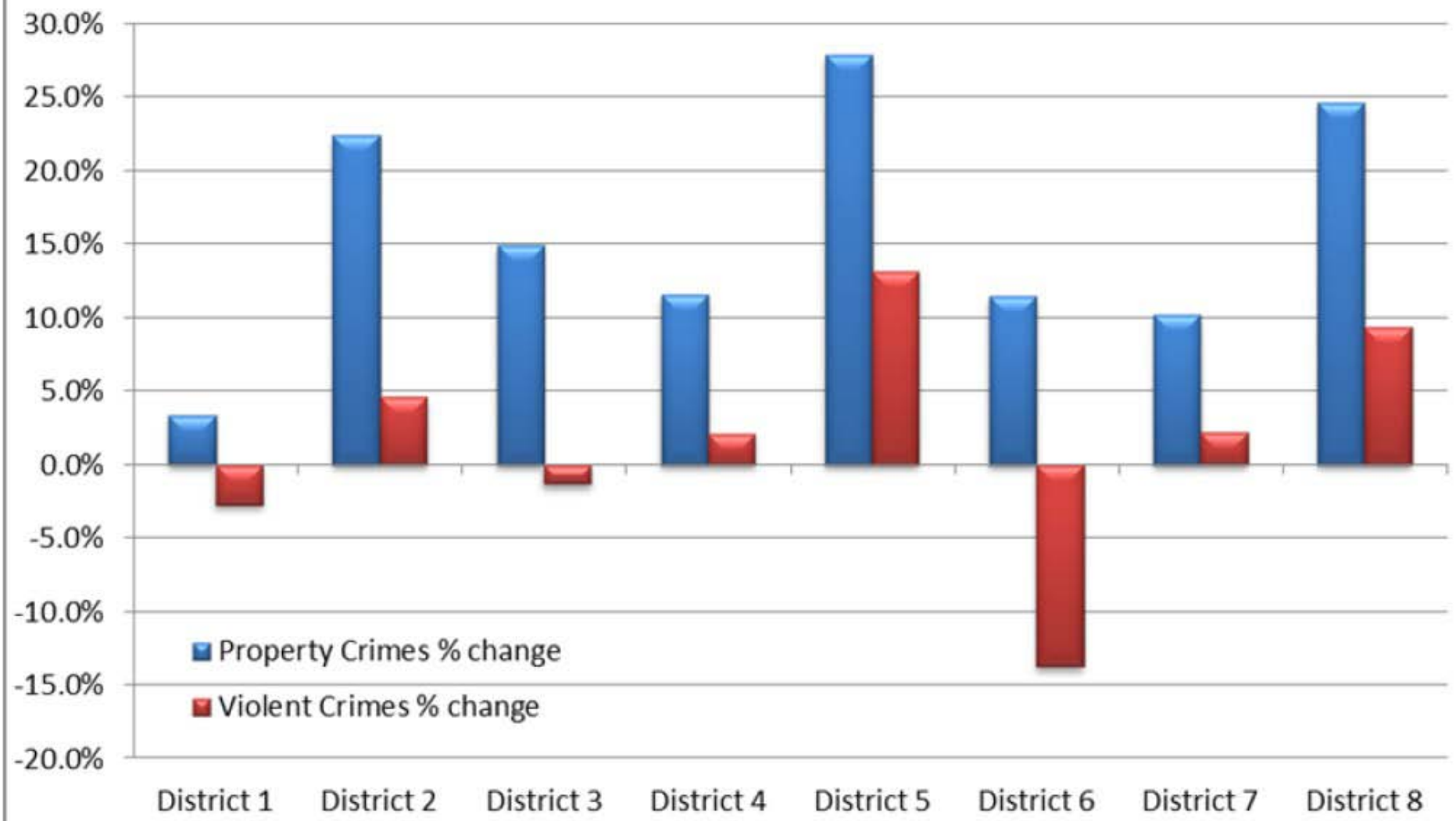
Part 1 Crime Categories	7 Day Comparison			28 Day Comparison			YTD Comparison		
	Current	Prior	Percent	Current	Prior	Percent	Current	Prior	Percent
Violent									
Criminal Homicide	<input type="text"/>	<input type="text"/>	<input type="text"/>	<input type="text"/>	<input type="text"/>	<input type="text"/>	<input type="text"/>	<input type="text"/>	<input type="text"/>
Rape	<input type="text"/>	<input type="text"/>	<input type="text"/>	<input type="text"/>	<input type="text"/>	<input type="text"/>	<input type="text"/>	<input type="text"/>	<input type="text"/>
Robbery	<input type="text"/>	<input type="text"/>	<input type="text"/>	<input type="text"/>	<input type="text"/>	<input type="text"/>	<input type="text"/>	<input type="text"/>	<input type="text"/>
Aggravated Assault	<input type="text"/>	<input type="text"/>	<input type="text"/>	<input type="text"/>	<input type="text"/>	<input type="text"/>	<input type="text"/>	<input type="text"/>	<input type="text"/>
Violent Total:	<input type="text"/>	<input type="text"/>	<input type="text"/>	<input type="text"/>	<input type="text"/>	<input type="text"/>	<input type="text"/>	<input type="text"/>	<input type="text"/>
Property									
Burglary Residence	<input type="text"/>	<input type="text"/>	<input type="text"/>	<input type="text"/>	<input type="text"/>	<input type="text"/>	<input type="text"/>	<input type="text"/>	<input type="text"/>
Burglary Non Residence	<input type="text"/>	<input type="text"/>	<input type="text"/>	<input type="text"/>	<input type="text"/>	<input type="text"/>	<input type="text"/>	<input type="text"/>	<input type="text"/>
Larceny	<input type="text"/>	<input type="text"/>	<input type="text"/>	<input type="text"/>	<input type="text"/>	<input type="text"/>	<input type="text"/>	<input type="text"/>	<input type="text"/>
Vehicle Theft	<input type="text"/>	<input type="text"/>	<input type="text"/>	<input type="text"/>	<input type="text"/>	<input type="text"/>	<input type="text"/>	<input type="text"/>	<input type="text"/>
Arson	<input type="text"/>	<input type="text"/>	<input type="text"/>	<input type="text"/>	<input type="text"/>	<input type="text"/>	<input type="text"/>	<input type="text"/>	<input type="text"/>
Property Total:	<input type="text"/>	<input type="text"/>	<input type="text"/>	<input type="text"/>	<input type="text"/>	<input type="text"/>	<input type="text"/>	<input type="text"/>	<input type="text"/>
Preliminary Part 1 Crime Totals:	<input type="text"/>	<input type="text"/>	<input type="text"/>	<input type="text"/>	<input type="text"/>	<input type="text"/>	<input type="text"/>	<input type="text"/>	<input type="text"/>
	Current 7 Day Period:		12/11/2012 - 12/17/2012	Prior 7 Day Period:		12/4/2012 - 12/10/2012			
	Current 28 Day Period:		11/20/2012 - 12/17/2012	Prior 28 Day Period:		10/23/2012 - 11/19/2012			
	Current YTD Period:		1/1/2012 - 12/17/2012	Prior YTD Period:		1/1/2011 - 12/17/2011			

Prepared by SPD Crime Analysis Office - Tuesday, December 18, 2012

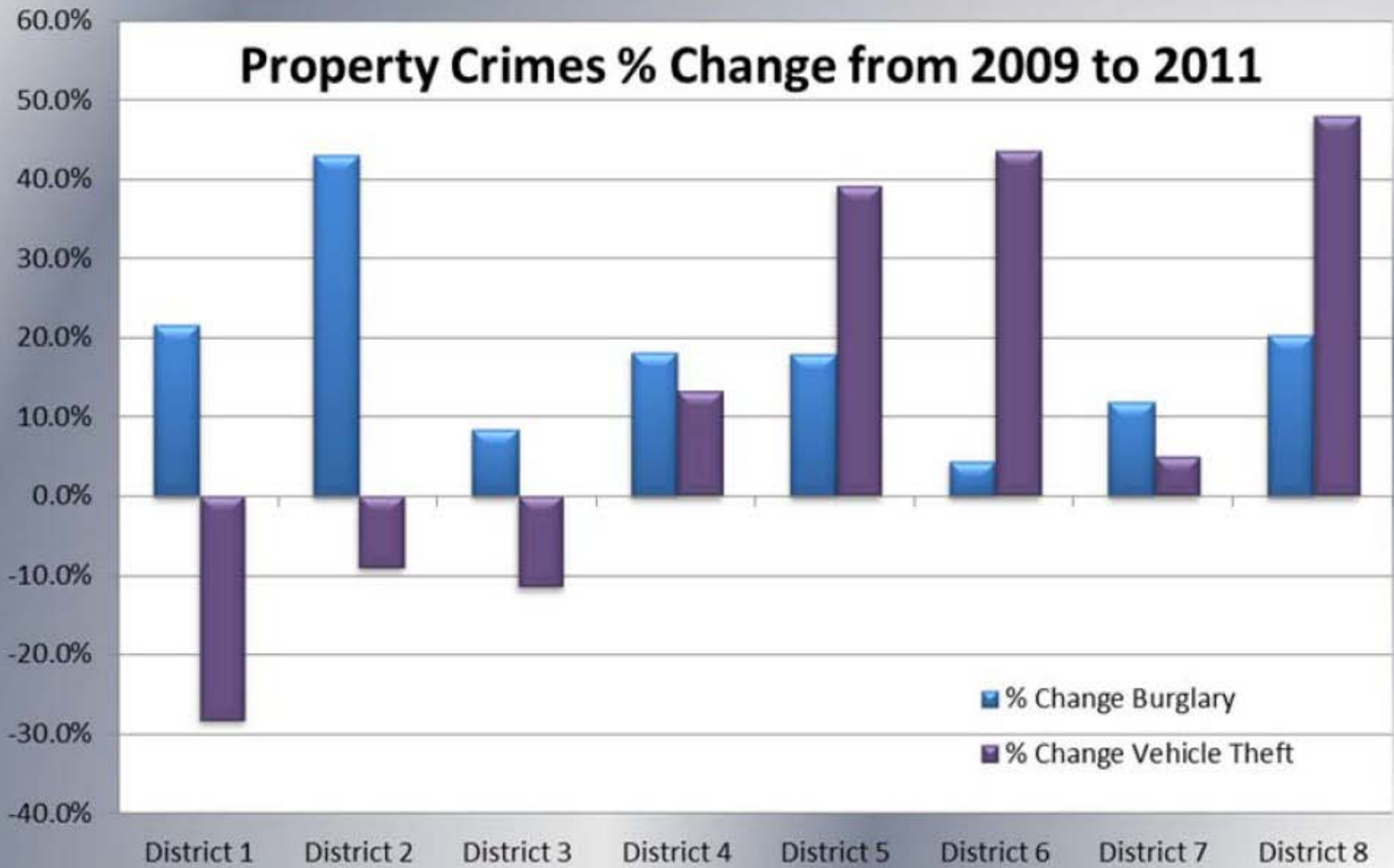
With the exception of criminal homicides, this chart represents preliminary counts of the original Police Incident Reports. Full statistical analysis to determine the confidence level of this data has not been performed. In general, the preliminary incident counts are less than the crimes eventually reported on the UCR Crime Report. Further, the % change columns on the preliminary incident count differ from the percentage change on the UCR crime report, sometimes significantly.

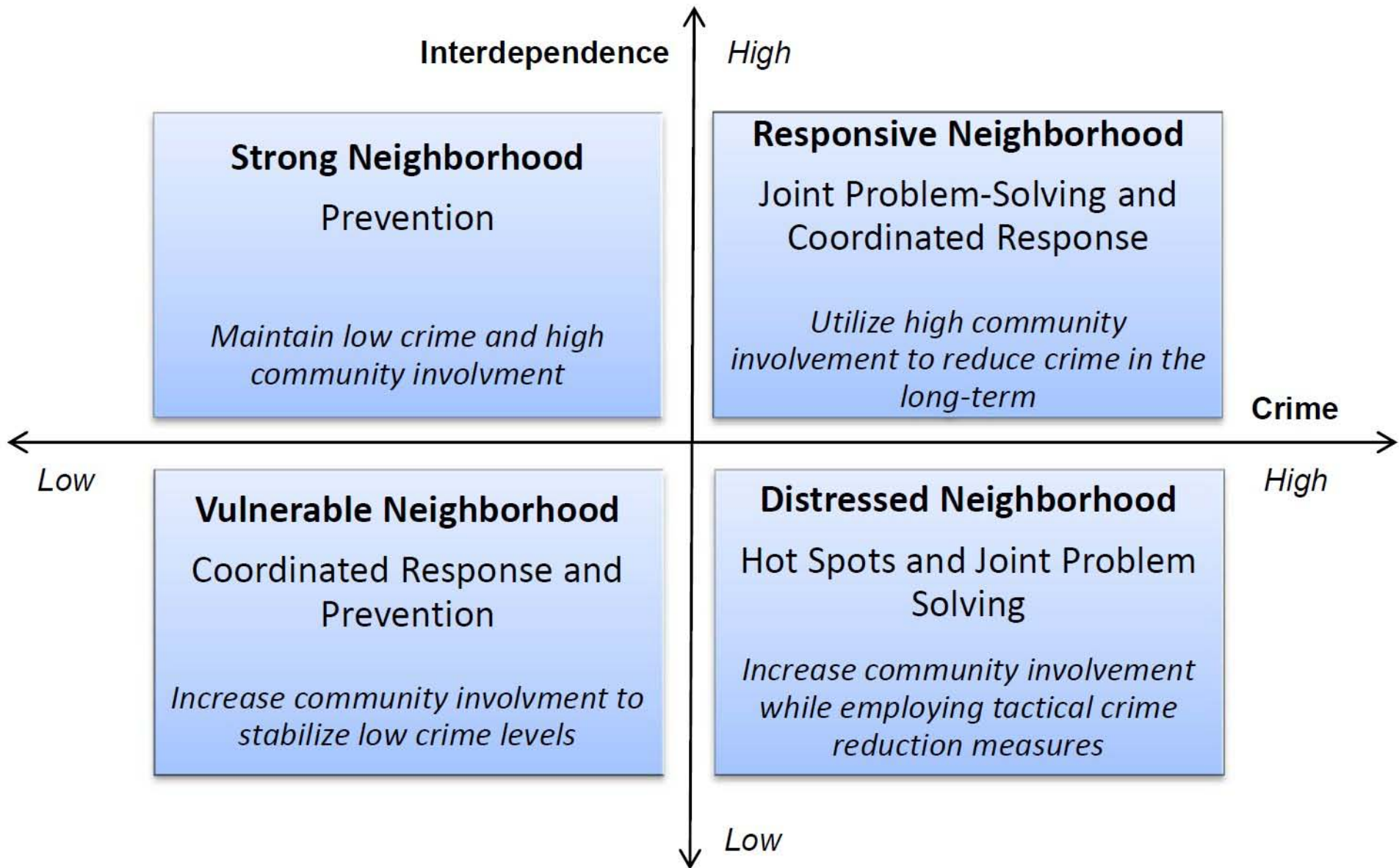


Part I Crimes % Change from 2009 to 2011



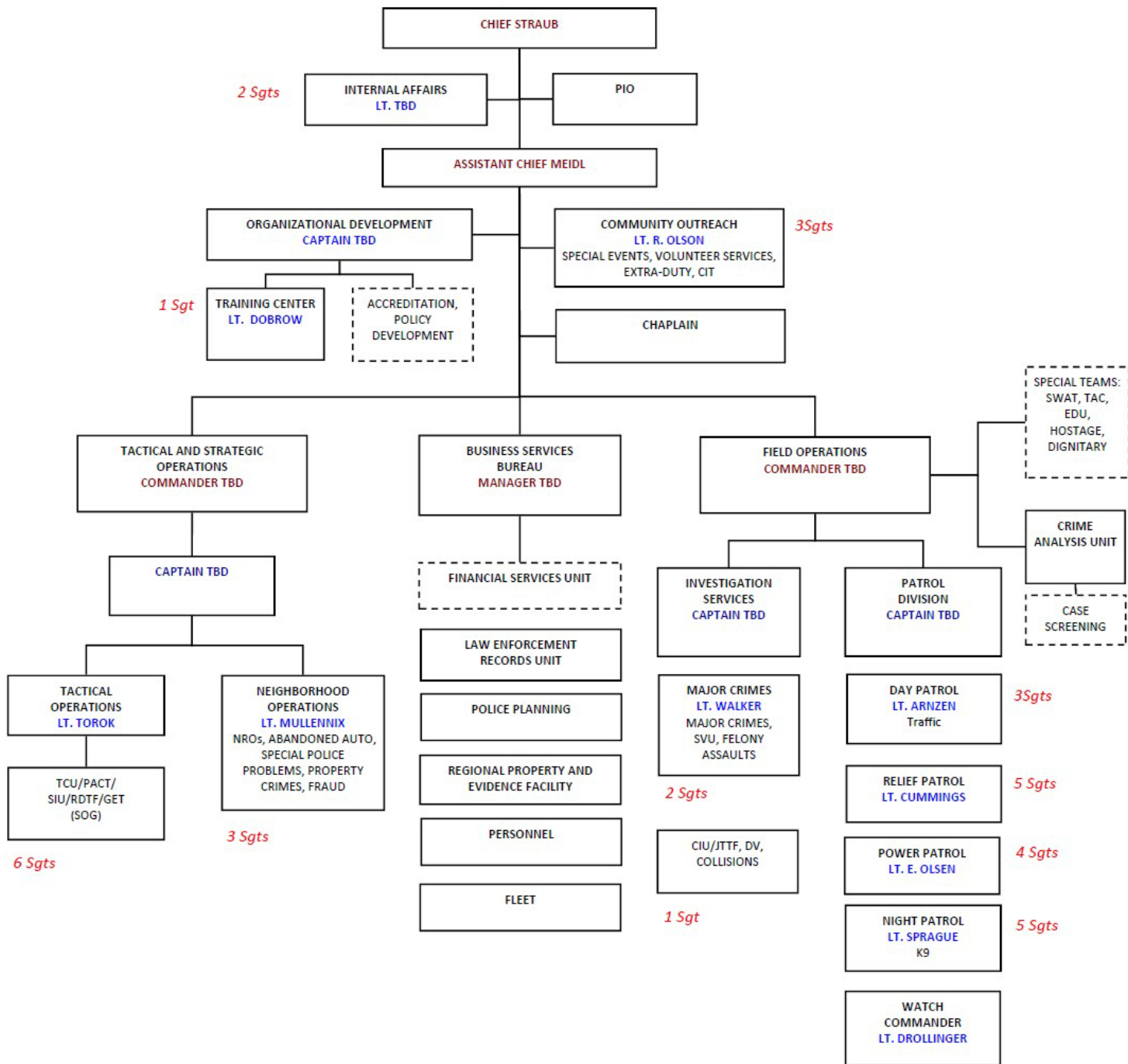
Property Crimes % Change from 2009 to 2011





SOURCE: "Situational Policing" by Nolan, J.J., Conti, N., and McDevitt, J.

SPD ORGANIZATION



Making Spokane a Safer City



Questions?

