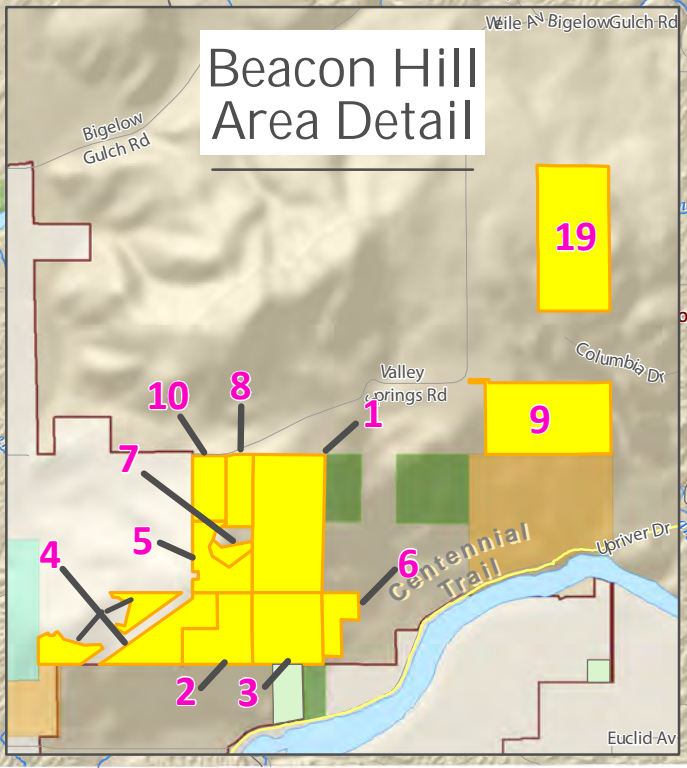
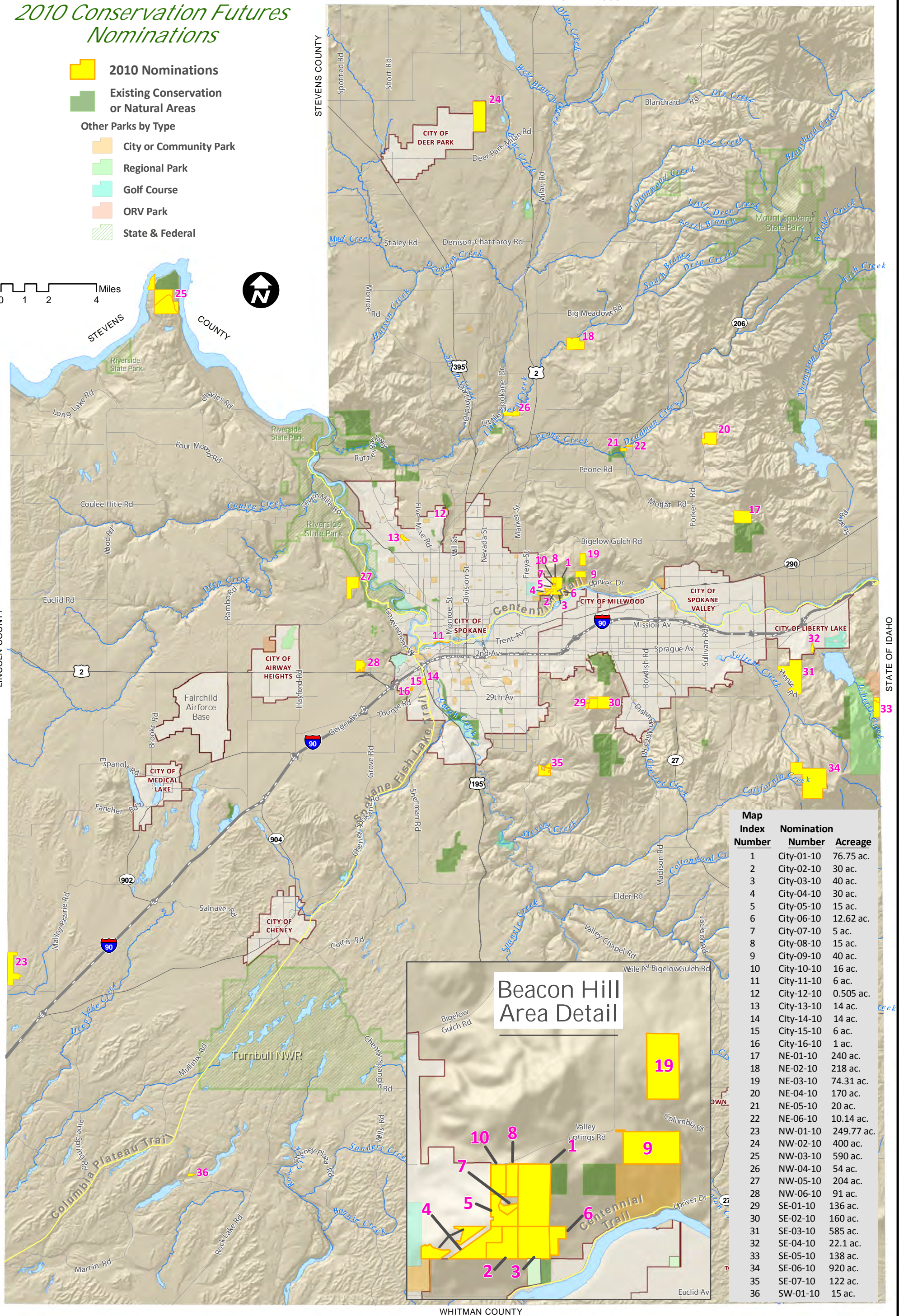


# SPOKANE COUNTY

## 2010 Conservation Futures Nominations

- 2010 Nominations
- Existing Conservation or Natural Areas
- Other Parks by Type
  - City or Community Park
  - Regional Park
  - Golf Course
  - ORV Park
  - State & Federal

0 1 2 4 Miles



Map Index Number	Nomination Number	Acreeage
1	City-01-10	76.75 ac.
2	City-02-10	30 ac.
3	City-03-10	40 ac.
4	City-04-10	30 ac.
5	City-05-10	15 ac.
6	City-06-10	12.62 ac.
7	City-07-10	5 ac.
8	City-08-10	15 ac.
9	City-09-10	40 ac.
10	City-10-10	16 ac.
11	City-11-10	6 ac.
12	City-12-10	0.505 ac.
13	City-13-10	14 ac.
14	City-14-10	14 ac.
15	City-15-10	6 ac.
16	City-16-10	1 ac.
17	NE-01-10	240 ac.
18	NE-02-10	218 ac.
19	NE-03-10	74.31 ac.
20	NE-04-10	170 ac.
21	NE-05-10	20 ac.
22	NE-06-10	10.14 ac.
23	NW-01-10	249.77 ac.
24	NW-02-10	400 ac.
25	NW-03-10	590 ac.
26	NW-04-10	54 ac.
27	NW-05-10	204 ac.
28	NW-06-10	91 ac.
29	SE-01-10	136 ac.
30	SE-02-10	160 ac.
31	SE-03-10	585 ac.
32	SE-04-10	22.1 ac.
33	SE-05-10	138 ac.
34	SE-06-10	920 ac.
35	SE-07-10	122 ac.
36	SW-01-10	15 ac.

**Spokane County Parks, Recreation & Golf**  
 404 North Havana  
 Spokane, WA 99202

**General Information**  
 (509)477-4730

**Fax**  
 (509)477-2454

Map Produced: August 2010  
 Spokane County  
 Geographic Information Systems