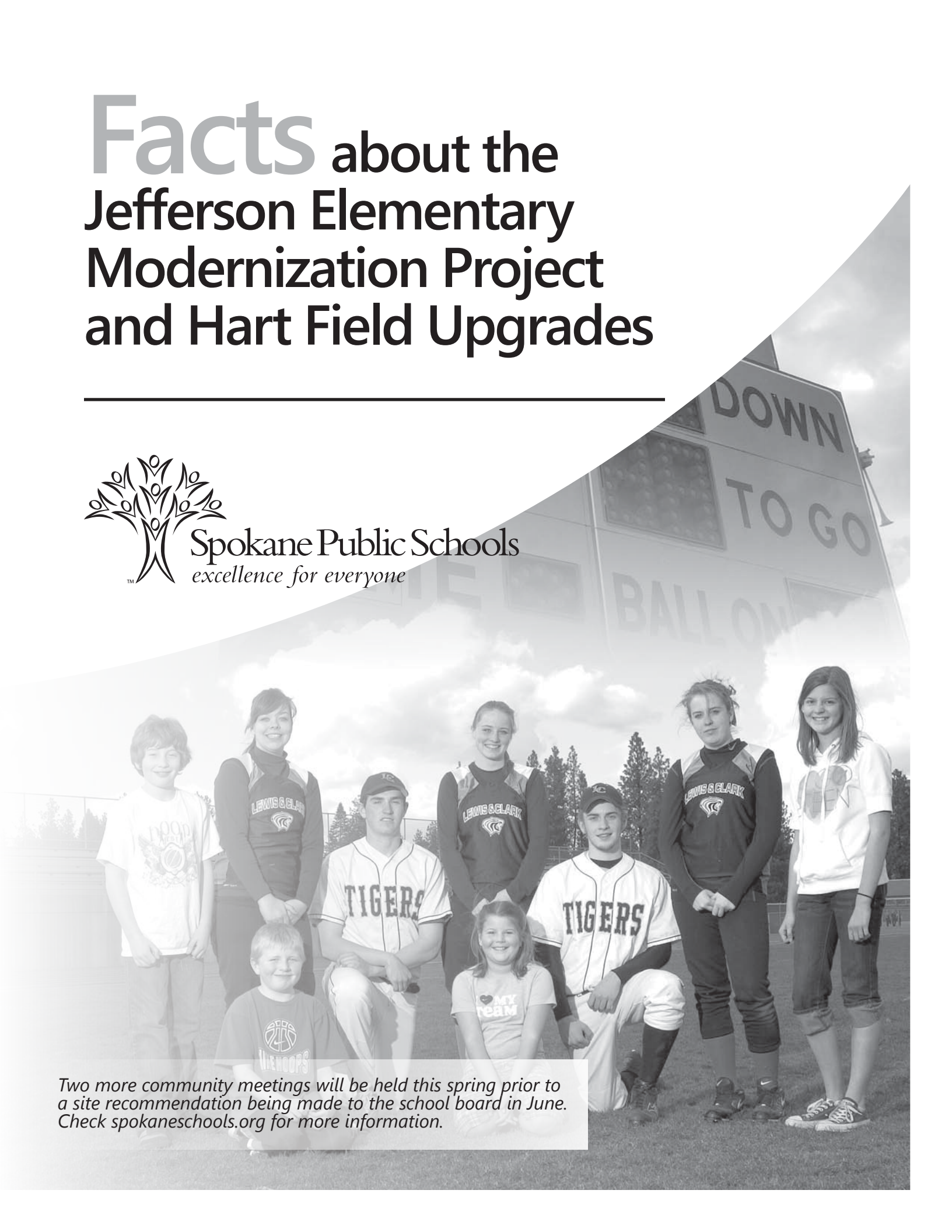


# Facts about the Jefferson Elementary Modernization Project and Hart Field Upgrades

---



Spokane Public Schools  
*excellence for everyone*



*Two more community meetings will be held this spring prior to a site recommendation being made to the school board in June. Check [spokaneschools.org](http://spokaneschools.org) for more information.*

# FAQ Jefferson and Hart Field Projects

---

## ***What are the options being considered? (see drawings)***

Spokane Public Schools owns the entire 35.6-acre Hart Field site, which gives the school district several options for the modernization of Jefferson Elementary and upgrades to Hart Field. Options being considered are:

**East:** Jefferson stays at 37th and Grand and uses the 1908 building as the site "anchor."

**West:** Jefferson moves to the west end of Hart Field, near where Manito Primary was located in the 1950s.

**North:** Jefferson moves across the street from Sacajawea Middle School, on the north end of Hart Field.

## ***How will the recommended school site be chosen?***

A steering committee of 16 people, facilitated by architects from MMEC, has been meeting since January 2010 to develop planning options. The committee includes representatives from the Comstock Neighborhood Council and Spokane Preservation Advocates; Jefferson parents and teachers; district administrators, and administrators from Jefferson, Sacajawea Middle School and Lewis and Clark High School. SPS administration, based on the committee's work and community feedback, will ultimately make a recommendation to the school board, likely in June 2010, on which site option will be best for the modernization of Jefferson elementary and upgrades to Hart Field.

## ***If the West or North option is chosen, will the old Jefferson be torn down?***

No. The district will make use of the historic 1908 building, possibly for administrative and support personnel use, or will sell it for commercial use with the restriction that the building be maintained.

## ***Where will students be located during the year of construction?***

If the East option (current site) is chosen, the students will be bused to another district site or sites. The West and North options allow students to remain in the current location while a new school is being built.

## ***How does each option impact Hart Field?***

All options would include additional event parking to help relieve congestion on the streets.

The North option (near Sac) will displace three softball/baseball fields and four tennis courts, which can be rebuilt by reorganizing the fields on the site and using the west side of the site for some of the replacement fields. The varsity boys baseball and football/track fields would not be impacted.

The West option (former site of Manito Primary) will displace one soccer field, which can be recreated by reorienting the remaining soccer field. The varsity boys baseball and football/track fields would not be impacted.

The East option (current site) would displace the football/track and require an extensive overhaul of all the fields (except boys varsity baseball). This is due to the current site not having enough room for expanding the current building, staff parking, playground and provide space for parent pick-up and drop-off area.

## ***Will the new football/ track be lighted and be used for evening events?***

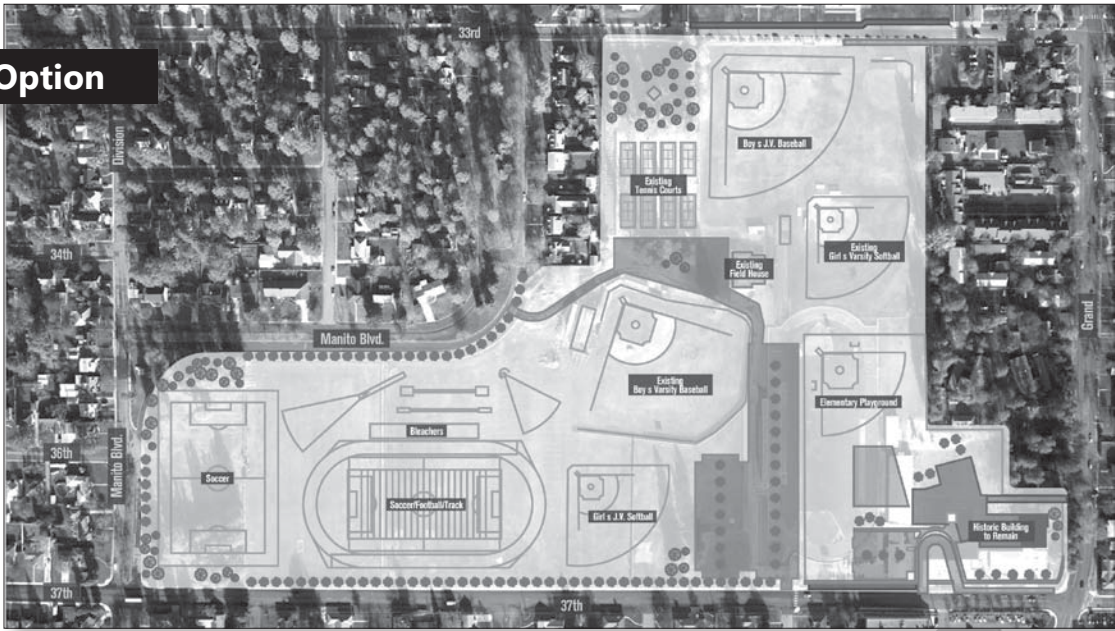
There are no plans to consider lighted fields at Hart Field. Lighted fields are not a district standard, and no fields in the district are lighted except Shadle Park's boys baseball field, which is on City park property.

## ***Can the number of fields be reduced to save trees?***

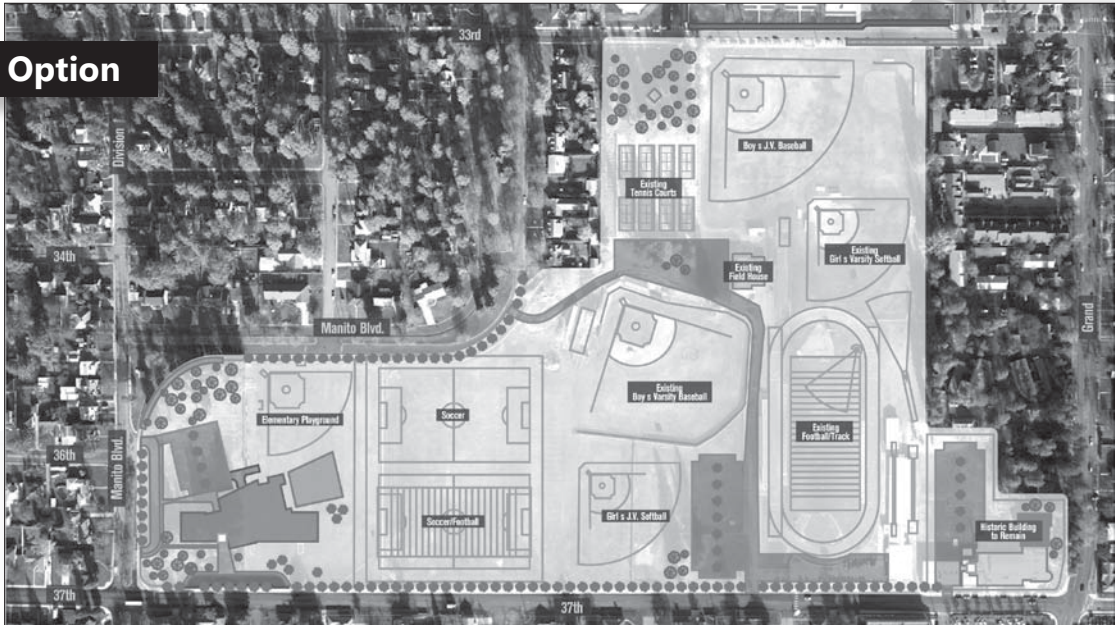
Yes, however many in the community would be concerned that a reduction in the number of fields would be a negative impact to Hart Field users and result in LC having fewer athletic fields than most other high schools.



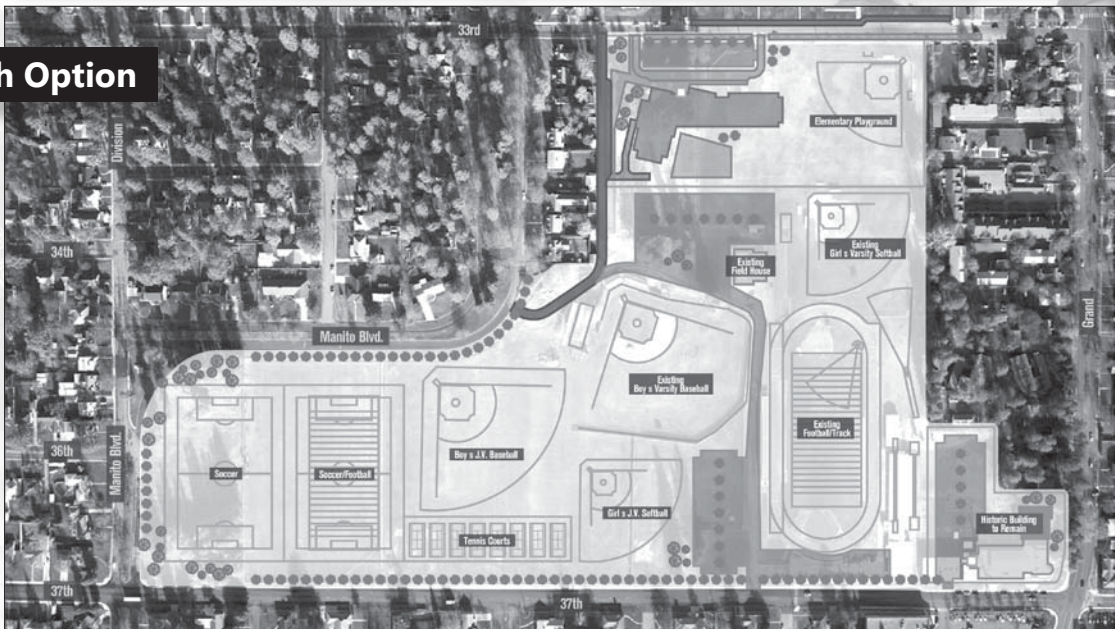
### East Option



### West Option



### North Option



# FAQ **Jefferson and Hart Field Projects - continued**

---

## ***How does each site impact trees?***

**North:** This option impacts the large stand of trees north of the tennis courts, and most of the trees on the west side of Hart Field to accommodate parking and relocated ball fields.

**West:** This option retains the trees north of the tennis courts and will have a small impact to the trees on the west side of the site.

**East:** This option impacts most of the trees on the west side of Hart Field to accommodate relocated ball fields but retains trees north of the tennis courts.

## ***How is the state match funding affected with each of the options?***

Each option would receive the same amount of state match funding to assist with the project.

## ***Are there any restrictions for using part of Hart Field for a school?***

No. The original deed of sale from Feb. 19, 1940, allows a school building or buildings to be built on Hart Field.

## ***Has there been a formal traffic study conducted?***

Not yet. Some preliminary data has been gathered but a formal study will be started soon.

## ***What will each option cost?***

A cost estimate cannot be completed until the site has been selected. The district has a \$25.1 million budget that will cover the cost of the east option, which would be the most expensive. Part of the budget includes student relocation costs to temporary site(s) and some demolition costs, which aren't needed if the west or north options are selected. The \$2.5 million Hart Field budget is separate from the school remodeling budget, but big enough to do all needed improvements, regardless of the option selected.

## ***Where can I find more information and a way to share my thoughts?***

The committee's first open house presentation Feb. 23 is online at [www.spokaneschools.org](http://www.spokaneschools.org) and the Jefferson Elementary website. You'll also find a comment form to fill out online, or print out and mail or drop off.

---

## **Jefferson Elementary School Project Facts**

Jefferson Elementary School originally opened in 1908. In 1948, an addition was built providing additional classrooms, a combination gymnasium and cafeteria, library and administrative space. Portable classrooms were added in 1955 and 1956.

Enrollment: 560 • Current Facility Size (Approx. Square Feet): Permanent 41,285 Portables 16,751

Current Site Size (Approx. Acres): 4.48 • Estimated Project Budget: \$25.1 million

Architectural Firm: Madsen Mitchell Evenson & Conrad (MMEC) PLLC of Spokane

General Contractor: To be selected in spring 2012

## **Hart Field Upgrade Facts**

Size: 35.6 acres • Originally Purchased: 1925 • Additional land acquired in 1939 and 1940

Used by Jefferson, Sacajawea and Lewis and Clark students as well as community events

Project budget: \$2.5 million

Project includes renovation of all ball fields to varying degrees to match district-wide standards, additional street trees and sidewalks, parking facilities, upgrades to locker room facilities, restrooms and concessions, new irrigation systems and tennis court re-surfacing



# Jefferson Elementary Modernization Project and Hart Field Upgrades



**We value your input!** Your thoughts will assist a site selection steering committee as it explores all options for making a recommendation to the district administration on the best placement of the modernized Jefferson Elementary and upgrades to Hart Field. The school board will make the final decision in June 2010. Please complete all questions so that we may respond to your comment or follow up should we need additional input.

**Please return this form by March 31st to one of the following:**  
Jefferson Elementary School, 3612 S. Grand Blvd., Spokane WA, 99203  
or  
MMEC Architects, 216 N. Howard, Skywalk Level, Spokane WA, 99201  
This form is also available at [spokaneschools.org](http://spokaneschools.org).

After reviewing information about the project, which site or sites do you prefer?

- East (current location)
- West (former site of Manito Primary)
- North (across from Sacajawea Middle School)
- Undecided

Tell us why:

---

---

---

What other information would be helpful to you?

---

---

---

Comments? Questions?

---

---

---

Name: \_\_\_\_\_

Address: \_\_\_\_\_

Email address: \_\_\_\_\_

